

INSTALLATION PROCEDURES

- Housing can be installed in direct contact with insulation.
- Cut a 4-3/16" diameter opening in the ceiling.
- Make all necessary electrical connections (See "Electrical Connection").
- With clips seated properly inside can, insert housing through ceiling opening, junction box first, until it is flush with ceiling.
- Hold fixture up against ceiling and push clips through housing slots.
- To lock clip into place, push flat portion against side of can in an upward direction (Figure 1A). To complete installation, push up clip with screwdriver until it snaps into place. To release, pull down on clip (Figure 1B).

ELECTRICAL CONNECTION:

- Provide electrical service (120V only) with flexible cable only. Pass cable through opening and wire fixture in accordance with NEC or local electrical code.
- Housing junction box contains two wires: a black (hot) and a white (neutral). Wires must be spliced to the current feed wires. **ALWAYS SPLICE WHITE TO WHITE AND BLACK TO BLACK.**
- Insert wires carefully into junction box. Connect the ground wire to the grounding pigtail in junction box (Figure 2). Replace cover.

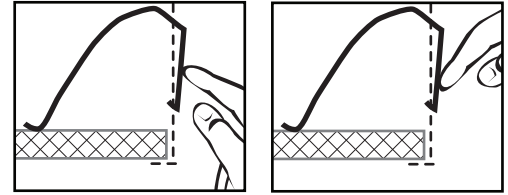
TRIM INSTALLATION:

- Depending upon trim style chosen, the GU10 MR16 may need to be installed into either the socket or trim first.
- The GU10 MR16 is inserted into socket base and turned clockwise until seated.
- When using an incandescent GU10 MR16 without integral cover glass, place the tempered glass lens (supplied with the trim) into the lamp holder and properly seat the lamp between the spring retainer and the clear tempered lens. **If using a GU10 MR16; either incandescent with integral cover glass or LED, do NOT install the tempered glass lens provided with trim.**
- Trim and lamp combination can now be inserted into the housing, being careful not to pinch socket wires. Push trim firmly until seated against ceiling surface. Trim is held securely in place with friction springs

IMPORTANT SAFETY INSTRUCTIONS:

- Read all the instructions before installation. Save instructions for later use.
- Turn off power at fuse or circuit breaker box before installation or before doing any maintenance work.
- Product must be grounded to avoid potential electric shock and any other potential hazards.
- Product must be mounted in locations and at heights and in a manner consistent with its intended use, and in compliance with National Electrical Code and local codes. Use of accessory equipment is not recommended.
- Installing contrary to instructions may cause unsafe conditions.
- Do not block light from the trim aperture, in whole or in part, as this may cause unsafe conditions.
- **Warning:** Risk of fire. Most dwellings built before 1985 have supply wire rated at 60°C. Consult a qualified electrician before installation.
- Avoid hazards to children: account for all parts and properly dispose of all packing materials.
- Call Technical Support at ConTech Lighting with any installation questions: 847.559.5500.

1



A. To Install

B. To Remove

2

