

INSTALLATION PROCEDURES

- **Housing can NOT be installed in direct contact with insulation.** Do not install insulation within 3" of fixture sides or wiring compartment, nor above fixture in such a manner to entrap heat. (Figure 1)
- Carefully cut a 4-3/8" diameter hole in desired position.
- Locate electrical supply cable in ceiling.
- Make all necessary electrical connections (See "Electrical Connection").

ELECTRICAL CONNECTION:

- Local electrical codes should be consulted to determine acceptable installation: conduit, Romex or flexible metal cable.
- Remove the junction box cover.
- Follow the proper wiring diagram for the electrical/dimming option (PAGE 2). Ensure wiring is the correct voltage for the fixture – either 120V or 277V.
- Wiring Diagram 1: 12D, 27D, (Triac, ELV or 0-10V). Triac and ELV dimming for 120V only. Note: When dimming with 0-10V, Class 1 wiring (300V wiring inside conduit) is required. Please consult factory for additional details.
- Wiring Diagram 2: 12D3 (Lutron HiLume)
- Wiring Diagram 3: 12D4, 27D4 (Lutron EcoSystem)
- Close junction box cover after wiring. Ensure all wires are safely within junction box before closing

INSTALLING HOUSING INTO CEILING:

- Remove protective paint overspray cover from housing.
- With mounting clips (3) seated inside of housing, insert into ceiling, junction box first. (Figure 2)
- Hold fixture up against ceiling and push mounting clip through housing slot. To lock clip in place, push flat portion against side of can (Figure 3A). To release, pull down on clip (Figure 3B).
- If not immediately installing trim, reinstall protective paint overspray cover in housing.

INSTALLING TRIMS

- Remove protective paint overspray cover from housing.
- Trim is held securely in housing with three friction springs. Simply push trim into housing until seated against ceiling.

REPLACEMENT OF LED DRIVER:

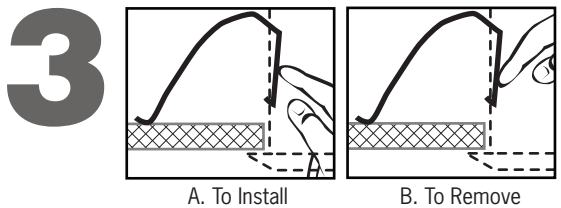
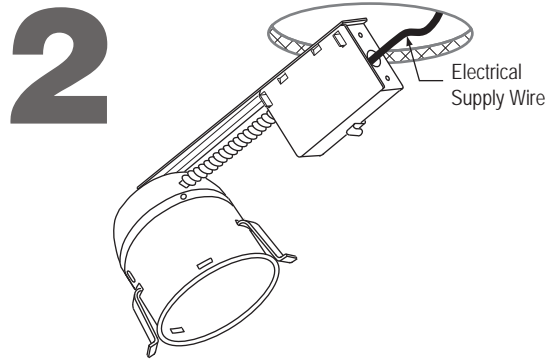
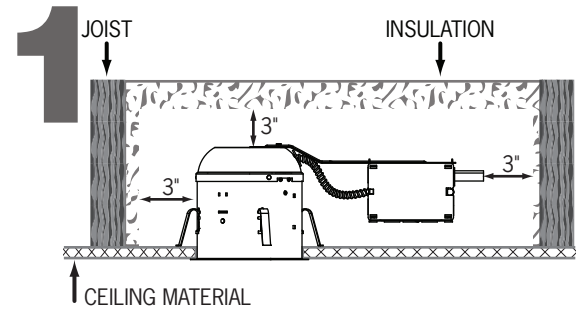
- NOTE:** LED Driver should be replaced by a qualified electrician. Turn off power at fuse or circuit breaker box before replacing the LED Driver.
- Remove trim from housing.
 - Release mounting clips. (Figure 3B)
 - Remove housing from ceiling.
 - Driver may be mounted in junction box or on junction box cover. Remove the junction box cover and remove LED Driver.
 - Disconnect LED Driver from line voltage input wiring in junction box. Disconnect the LED Driver from the LED leads.
 - Reinstall Factory Approved LED Driver by reversing above procedure.

IMPORTANT SAFETY INSTRUCTIONS:

- Read all the instructions before installation. Save instructions for later use.
- Turn off power at fuse or circuit breaker box before installation or before doing any maintenance work.
- Product must be grounded to avoid potential electric shock and any other potential hazards.
- Product must be mounted in locations and at heights and in a manner consistent with its intended use, and in compliance with National Electrical Code and local codes. Use of accessory equipment is not recommended.
- Installing contrary to instructions may cause unsafe conditions.
- Do not block light from the trim aperture, in whole or in part, as this may cause unsafe conditions.
- **Warning:** Risk of fire. Most dwellings built before 1985 have supply wire rated at 60°C. Consult a qualified electrician before installation.
- To avoid hazards to children, account for all parts and properly dispose of all packing materials.
- Call the Technical Support department at ConTech Lighting with any installation questions: 847.559.5500.

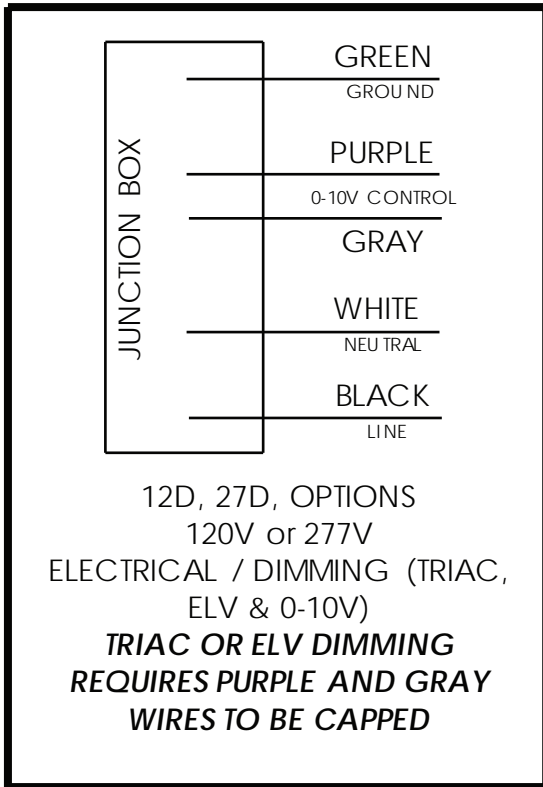
WARRANTY

- Energy Star products are covered for three (3) years by a full replacement guarantee after date of installation. In addition, ConTech LED products carry a five (5) year limited warranty from date of purchase.

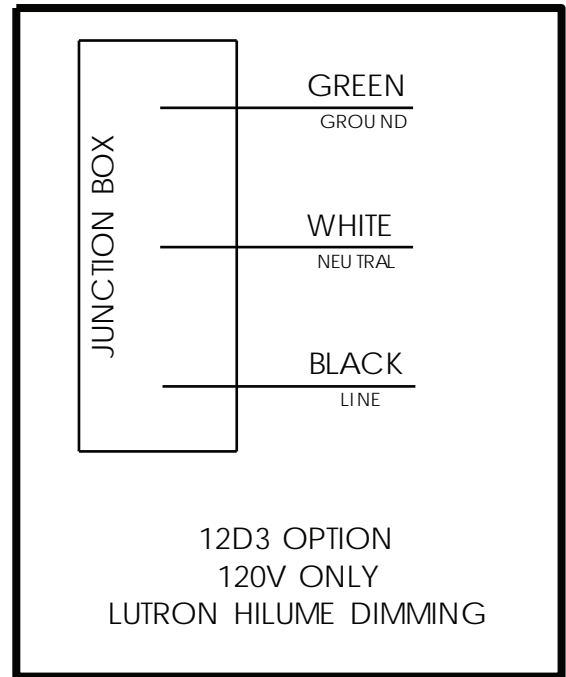


WIRING DIAGRAMS

WIRING DIAGRAM-1



WIRING DIAGRAM-2



WIRING DIAGRAM-3

