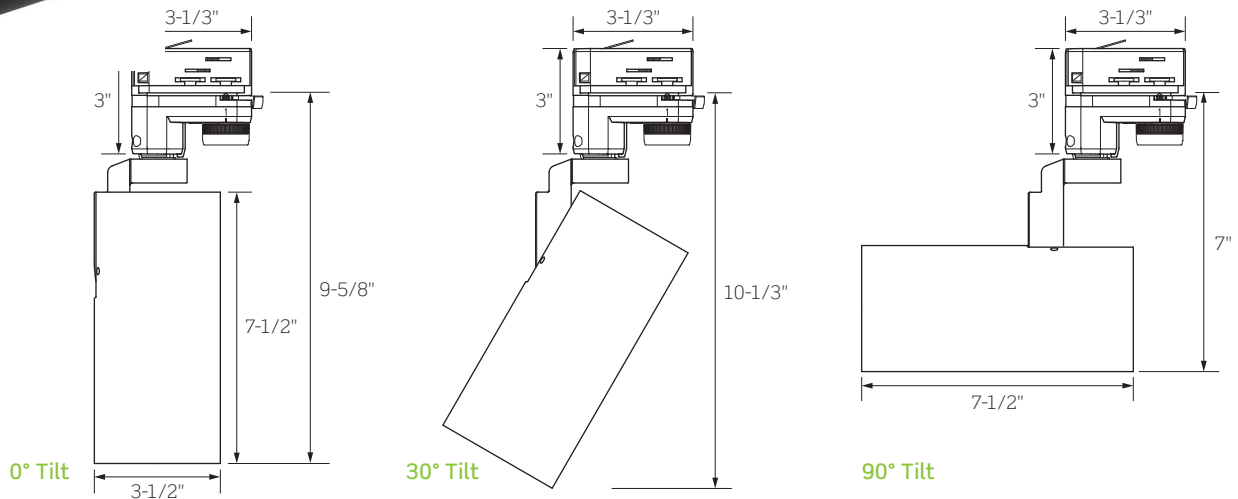


NCTL93 SERIES | Gallery M Track Luminaire for 2C/2N Nordic Track Systems featuring Bridgelux® Warm Dim LED



High performance track luminaire delivering high outputs and superior beam control

- Clean aesthetics, simple cylinder form
- Multiple beam distributions
- Delivering up to 2400 Lumens
- Bridgelux® Vesta® Warm Dim LED; 3000K to 1800K



	NCTL932	NCTL935
WATTAGE	16W	35W
LUMEN OUTPUT ¹ BY BEAM SPREAD		
Spot (14°)	1188Lm	N/A
Narrow Flood (22°)	N/A	2310Lm
Medium Flood (37°)	1158Lm	2524Lm
COLOR TEMPERATURE	3000K to 1800K (See Dimming Compatibility for low end CCT)	
CRI	95	
FINISHES	Matte Black / Matte White / Matte Silver	
DRIVER INPUT VOLTAGE	120V or 277V, 50/60Hz	
DIMMING TYPE	120V Forward/Reverse Phase Dimming; 277V is Non-Dimming	
COMPATIBILITY	Compatible with Global/Nordic Aluminum Inc. Track Systems	
LISTINGS	cCSAus Certified for use in the U.S. and Canada; Suitable for Dry Locations	
WARRANTY	Five (5) year replacement after date of purchase	
SYSTEM RATING	50,000 Hours @ 70% Lumen Maintenance	

1. Approximate lumen output based on 3000K performance; see photometric test results for additional information

NCTL93 SERIES | Gallery M Track Luminaire for 2C/2N Nordic Track Systems featuring Bridgelux® Warm Dim LED

ORDERING INFORMATION

Example Order: NCTL932SPWD-P1C

LED Series	Beam Option	CCT/CRI	Driver	Finish	Nordic Adapter
NCTL932 16W NCTL935 35W	SP ⁵ Spot: 14° Beam/30° Field NF ⁶ Narrow Flood: 24° Beam/45° Field MF Medium Flood: 38° Beam/63° Field	95 CRI WD 3000K to 1800K	D 120V Forward/Reverse Phase Dimming	B Matte Black P Matte White S Matte Silver	Nordic NTEK 120V 2C/2N Leave Blank 27 Nordic NHTEK 277V 2C/2N 1C Nordic ECO 120V 1C/1N or 2C/1N 3C Nordic Pro 120V 3C/1N

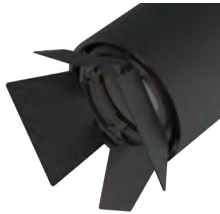
5. Spot (SP) Beam is only available for Series 2 (16W)
6. Narrow Flood (NF) Beam is only available for Series 5 (35W)

ACCESSORY & REPLACEMENT OPTIC ORDERING INFORMATION

Each Gallery M Luminaire may hold up to two (2) pieces of Media **OR** one (1) Snoot or Barn Door Assembly plus one (1) piece of Media



Snoot with Optional Cross Blades
Exterior painted per finish selection: Black (B), White (P) or Silver (S). Interior and Cross Blades are always Black.



Barn Doors
Black finish. Barn Doors may hold one LF18 Lens or LA-35 Honeycomb Louver.



Honeycomb Louver
Black finish

Accessory
FA-93 Snoot with optional Cross Blades

Finish
B Matte Black P Matte White S Matte Silver

Accessory
BD93 Barn Doors

Finish
B Matte Black

Accessory
FA-16-60MM 2-3/8-In. Black Honeycomb Louver LA-35 3-1/16-In. Black Honeycomb Louver for use within Barn Doors only



Tempered Glass Filters and Lenses
1/8-Inch Thick, typ.

Accessory
LF16 Tempered Glass Filters and Lenses LF18 Tempered Glass Filters and Lenses for use within Barn Doors only

Finish	
C Clear SL Soft Light SOL Solite LS Linear Spread 73 Spread UV Optivex UV	A Amber B Blue LB Light Blue G Green R Red RO Rose Y Yellow

Size
60MM 2-3/8-Inch <i>Leave Blank</i> 3-1/16-Inch LF18 Series for use within Barn Doors only

Replacement Optics
CTL93WDOPT-SP ⁵ Spot Replacement 14° Beam / 30° Field CTL93WDOPT-NF ⁶ Narrow Flood Replacement 24° Beam / 45° Field CTL93WDOPT-MF Medium Flood Replacement 38° Beam / 63° Field

5. Spot (SP) Beam is only available for Series 2 (16W)
6. Narrow Flood (NF) Beam is only available for Series 5 (35W)

NCTL93 SERIES | Gallery M Track Luminaire for 2C/2N Nordic Track Systems featuring Bridgelux® Warm Dim LED

PRODUCT SPECIFICATIONS

PERFORMANCE SUMMARY

- Light that Warms as it Dims
- CCT Range from 3000K to 1800K (3000K at full brightness to 1800K when dimmed to <5%), CRI of 95
- Excellent fixture-to-fixture color consistency within a 3-step MacAdam Ellipse tolerance
- Precise beam control ensures that even at lower aiming angles the luminaire is glare free and quiet in the ceiling
- Full collection of accessories available to produce a myriad of filtering and framing effects
- 120V Forward or Reverse Dimming is standard for all wattage options. For dimmer compatibility and performance, refer to the Dimming Specifications below.
- The Spot Beam configuration utilizes smaller LES LEDs to achieve beams and may not be used in higher wattage options (see Ordering Information for details)
- Optics are field interchangeable (with restrictions) and provide smooth, striation-free beams
- Luminaire may accept up to two (2) pieces of media (Lens or Louver), one (1) Snoot/Barn Door Assembly plus one (1) piece of media (Lens or Louver). Consult ordering information for proper combinations and sizes. **NOTE: Luminaire** may hold one (1) LF16 60MM Series Lens or FA-16-60MM Louver; **Barn Doors** may hold one LF18 Series Lens or LA-35 Louver
- Integral ON/OFF switch and track polarity indicator are standard
- Fixture weight: 3 LBS

CONSTRUCTION

- A revolutionary track head with superior optics designed to bring theatre grade beam control to traditional gallery and commercial track heads
- Constructed of die-cast aluminum, the cylindrical body provides thermal management for the luminaire
- Locking mechanisms for Tilt (0° to 91°) and Rotation (365°)
- Three (3) Beam Distributions available: 14° Spot, 24° Narrow Flood, and 38° Medium Flood

FIXTURE COMPATIBILITY

- Compatible with Nordic Aluminum Inc. TEK100 Track Systems
- ConTech can switch out the standard Nordic TEK00 adapter with either the GES66 or GA100 adapters for compatibility with other Nordic Aluminum Inc. Track Systems
- For more information, consult factory

DIMMING SPECIFICATIONS

- Incandescent 120V AC Dimmers adjust the light with *Forward Phase Control*, where the Dimmer “chops” the forward part of the AC Wave to deliver less or more power to the light source. No Neutral Wire Connection required.
- Electronic Low Voltage 120V AC Dimmers adjust the light with *Reverse Phase Control*, where the Dimmer “chops” the back part of the AC Wave to deliver less or more power to the light source. Neutral Wire Connection required.

FORWARD/REVERSE PHASE COMPATIBLE DIMMERS

MANUFACTURER	PRODUCT	MODEL	LIGHT OUTPUT
Leviton	Vizia	VPE06	4%-100%
Leviton	Decora	6673-10W	11%-100%
Lutron	Ariadni	TGCL-153P	0%-100%
Lutron	Diva	DVCL-153P	0%-100%
Lutron	Diva	DVELV303P	3%-100%
Lutron	Skylark	SELV300P	3%-100%
Lutron	Maestro	MAELV600	0%-100%
Lutron	Faetra	FAELV500	7%-100%
Lutron	Skylark C	SCL-153P	0%-100%
Lutron	Maestro C•L	MAELV153M	0%-99%
Lutron	RA2 Select	RRD-6CL	2%-98%

NOTES

1. If light is measured, then the dimming range is based on light output. If light is not measured, then the dimming range is based on the percentage of output current.
2. Testing was performed with a single fixture connected to dimmer.
3. Testing has been performed on these dimmers, but this does not imply any warranty of compatibility.
4. Dimming performance can be influenced by different loads, as well as variations in dimmer switches within the same model.
5. Dimmer maximum load rating with LED may differ from published traditional source dimmer ratings. Consult manufacturer for maximum dimmer information.
6. Consult factory for additional dimming information.

CTL93 SERIES | Gallery M Luminaire Bridgelux® Warm Dim LED Photometry

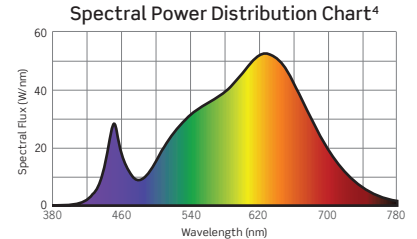
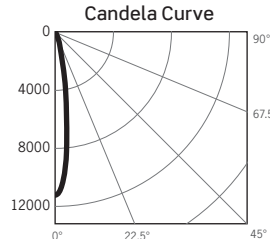
CTL932SPWDD: 17W, 3000K, 95 CRI, SPOT BEAM

Test No. G25091703

Fixture Delivered Lumens: 1187.73
 Total Watts@120V: 16.9
 Lumens Per Watt: 70.28
 Center Beam Candle Power: 11195
 Beam Distribution: 14.4°
 Spacing Criterion: 0.28
 Color Rendering Index (CRI)¹: 92.9
 Color Temperature (CCT)²: 2924K
 Designed for 50,000 Hour Lamp Life³

Intensity Distribution

DISTANCE (FT.)	FOOTCANDLES (FC)	BEAM DIA. (FT.)
4 FT	699.7	1.0
6 FT	311.0	1.5
8 FT	174.9	2.0
10 FT	111.9	2.5
12 FT	77.7	3.0
14 FT	57.1	3.5



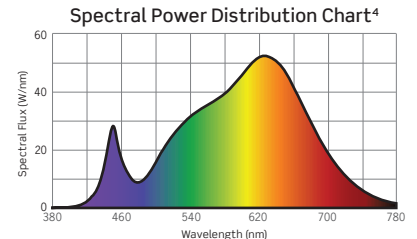
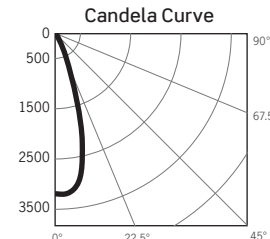
CTL932MFWDD: 17W, 3000K, 95 CRI, MEDIUM FLOOD BEAM

Test No. G25091702

Fixture Delivered Lumens: 1158.27
 Total Watts@120V: 16.9
 Lumens Per Watt: 68.54
 Center Beam Candle Power: 3188
 Beam Distribution: 36.0°
 Spacing Criterion: 0.53
 Color Rendering Index (CRI)¹: 92.9
 Color Temperature (CCT)²: 2924K
 Designed for 50,000 Hour Lamp Life³

Intensity Distribution

DISTANCE (FT.)	FOOTCANDLES (FC)	BEAM DIA. (FT.)
4 FT	199.3	2.6
6 FT	88.6	3.9
8 FT	49.8	5.2
10 FT	31.9	6.5
12 FT	22.1	7.8
14 FT	16.3	9.1



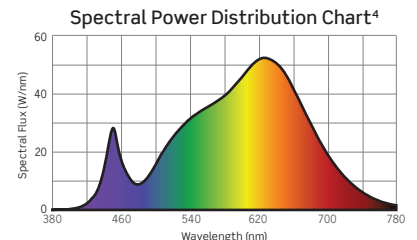
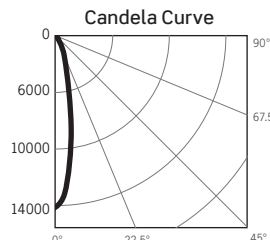
CTL935NFWDD: 35W, 3000K, 95 CRI, NARROW FLOOD BEAM

Test No. G25091701

Fixture Delivered Lumens: 2309.59
 Total Watts@120V: 35.5
 Lumens Per Watt: 65.06
 Center Beam Candle Power: 12050
 Beam Distribution: 22.0°
 Spacing Criterion: 0.37
 Color Rendering Index (CRI)¹: 92.9
 Color Temperature (CCT)²: 2924K
 Designed for 50,000 Hour Lamp Life³

Intensity Distribution

DISTANCE (FT.)	FOOTCANDLES (FC)	BEAM DIA. (FT.)
4 FT	753.1	1.6
6 FT	334.7	2.3
8 FT	188.3	3.1
10 FT	120.5	3.9
12 FT	83.7	4.7
14 FT	61.5	5.4



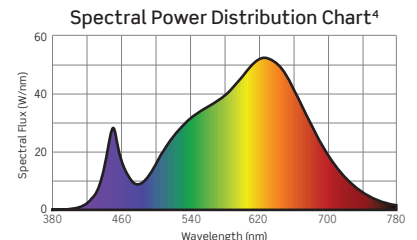
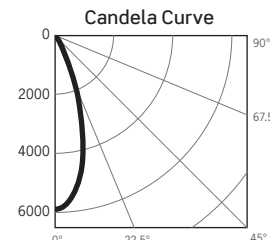
CTL935MFWDD: 35W, 3000K, 95 CRI, MEDIUM FLOOD BEAM

Test No. G25091602

Fixture Delivered Lumens: 2524.46
 Total Watts@120V: 35.6
 Lumens Per Watt: 70.91
 Center Beam Candle Power: 5896
 Beam Distribution: 38.0°
 Spacing Criterion: 0.58
 Color Rendering Index (CRI)¹: 92.9
 Color Temperature (CCT)²: 2924K
 Designed for 50,000 Hour Lamp Life³

Intensity Distribution

DISTANCE (FT.)	FOOTCANDLES (FC)	BEAM DIA. (FT.)
4 FT	368.5	2.8
6 FT	163.8	4.1
8 FT	92.1	5.5
10 FT	59.0	6.9
12 FT	40.9	8.3
14 FT	30.1	9.6



1. Accuracy of Rendering Colors 2. Color Appearance of Light Source 3. Dependent on Surrounding Temperatures 4. Colors Present within the Light Source

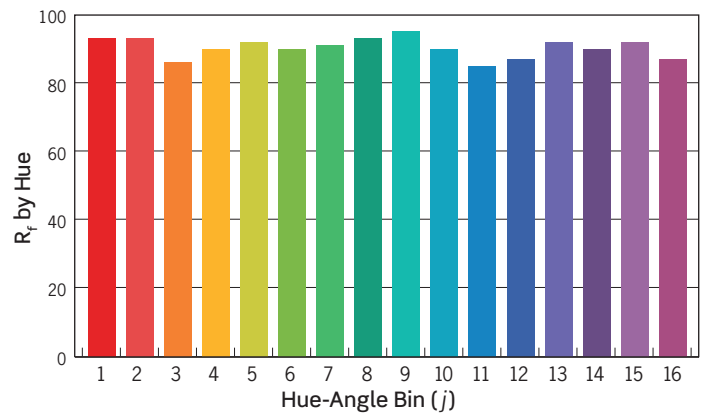
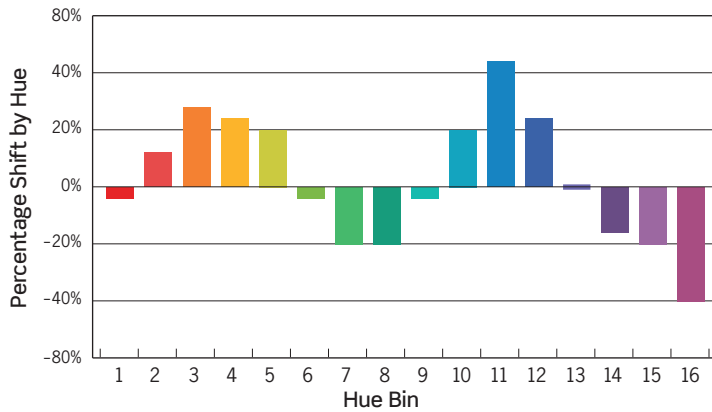
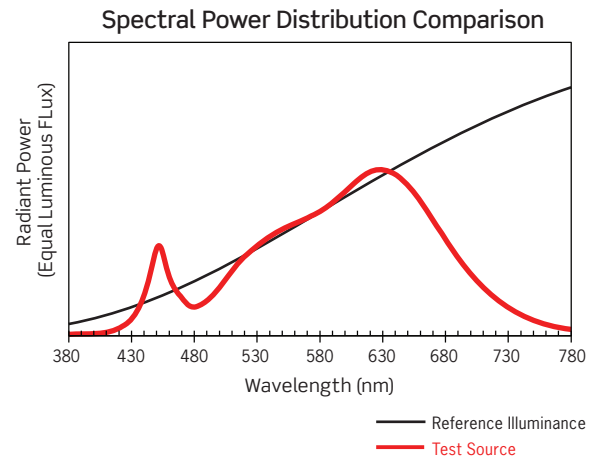
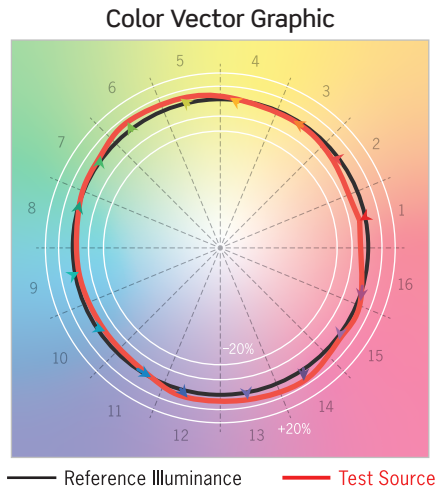
CTL93 SERIES | Gallery M Luminaire Bridgelux® Warm Dim LED Photometry

TM-30 DATA: CTL935MFWDD - AT FULL BRIGHTNESS

ANSI/IES TM-30-18 Color Rendition Report Test No. S25091701

Colors are for visual orientation purposes only

R_f	90
R_g	103
CCT(K)	2924K
D_{uv}	-0.0024
u^l	0.2541
v^l	0.5195



HUE BIN	1	2	3	4	5	6	7	8	9	10	11	12	13	14	15	16
HUE SHIFT	-1%	3%	7%	6%	5%	-1%	-5%	-5%	-1%	5%	11%	6%	0%	-4%	-5%	-10%
R_f VALUE	93	93	86	90	92	90	91	93	95	90	85	87	92	90	92	87