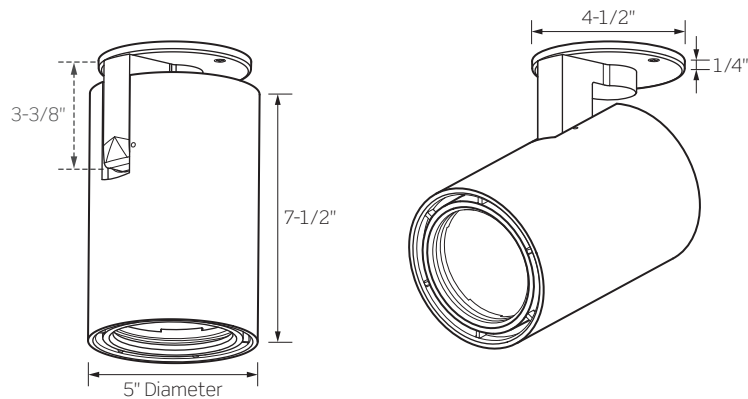


CTL94 C SERIES | Gallery XL Canopy Mount Luminaire



High performance track luminaire delivering high outputs and superior beam control

- Clean aesthetics, simple form
- High performance
- Multiple beam distributions
- Consistent color rendering



	CTL940C	CTL941C	CTL942C	CTL943C	CTL944C	CTL945C
WATTAGE	13W	20W	29W	38W	42W	49W
LUMEN OUTPUT ¹ BY BEAM SPREAD Beam Range: 8° to 50°						
Very Narrow Spot Optic	744 Lm	1023 Lm	1349 Lm	1550 Lm	N/A	N/A
Narrow Spot Optic	702 Lm	1033 Lm	1462 Lm	1793 Lm	1949 Lm	N/A
Spot Reflector	1283 Lm	1885 Lm	2646 Lm	3288 Lm	3609 Lm	4010 Lm
Medium Reflector	1365 Lm	2005 Lm	2816 Lm	3660 Lm	3839 Lm	4266 Lm
Flood Reflector	1428 Lm	2098 Lm	2946 Lm	3696 Lm	4017 Lm	4463 Lm
Wide Flood Reflector	1407 Lm	2067 Lm	2902 Lm	3606 Lm	3958 Lm	4398 Lm
COLOR TEMPERATURE	2700K / 3000K / 3500K / 4000K					
CRI	83 (80min) / 90+					
FINISHES	Matte Black / Matte White / Matte Silver					
DRIVER INPUT VOLTAGE	120V/ 277V, 50/60Hz					
DIMMING TYPE	120V Forward/Reverse Phase Dimming Integrated Rotary Dimming Option					
MOUNTING	Approved for Ceiling or Wall Mounting					
LISTINGS	cCSAus Certified for use in the U.S. and Canada; Suitable for Dry Locations DLC™ Certified for all models using Spot, Medium, Flood, and Wide Flood Reflectors					
WARRANTY	Five (5) year replacement after date of purchase					
SYSTEM RATING	50,000 Hours @ 70% Lumen Maintenance					

1. Approximate lumen output based on 3000K performance; see photometric test results for additional information

CTL94 C SERIES | Gallery XL Canopy Mount Luminaire

ORDERING INFORMATION

Example Order: CTL942CVN3KD-P

LED Series	Beam: Optic or Reflector	CCT/CRI	Driver	Finish	
CTL940C 13W CTL941C 20W CTL942C 29W CTL943C 38W CTL944C 42W CTL945C 49W	PC Optics Intensity at Nadir, Narrow Field VN² Very Narrow Spot: 8° Beam, 17° Field NS³ Narrow Spot: 11° Beam, 22° Field	Reflectors: Well Defined Beams, Smooth Field SP Spot: 11° Beam, 26° Field ME Medium: 22° Beam, 52° Field FL Flood: 41° Beam, 66° Field WF Wide Flood: 50° Beam, 83° Field	80+ CRI 27K 2700K 3K 3000K 35K 3500K 4K 4000K 90+ CRI 27KC 2700K 3KC 3000K 35KC 3500K 4KC 4000K	MVD 120V Forward/Reverse Phase Dimming or 120/277V 0-10V Dimming DI^{4,5} 120V Integrated Rotary Dimmer	B Matte Black P Matte White S Matte Silver

- Very Narrow Spot (VN) only available up to Series 3 (CTL943/38W)
- Narrow Spot (NS) only available up to Series 4 (CTL944/42W)
- Integrated Dimmer Option (DI) should not be used if Track will be controlled by an alternate Dimmer
- Integrated Dimmer Knob has a black finish

ACCESSORY & REPLACEMENT OPTIC ORDERING INFORMATION

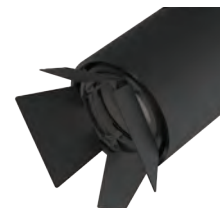
Each Gallery XL Luminaire comes ready to hold up to two (2) Accessories; Snoot or Barn Door count as one (1) piece



FA-94 Series
*Snoot with
 Optional Cross Blades*
 Exterior painted per finish
 selection: Black (B), White (P)
 or Silver (S). Interior and Cross
 Blades are always Black.



LA-45 Series
Honeycomb Louver
 3-3/4-Inch Diameter;
 Black finish



BD-94 Series
Barn Doors
 Black finish

Accessory
FA-94 Snoot with optional Cross Blades

Finish
B Matte Black P Matte White S Matte Silver

Accessory
LA-45 Black Honeycomb Louver

Accessory
BD94 Barn Doors

Finish
B Matte Black



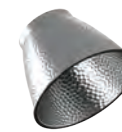
LF20 Series
*Tempered Glass
 Filters and Lenses*
 3-3/4-Inch Diameter, 1/8-Inch Thick, typ.



CTL94NS
 11° Narrow Spot



CTL94SP
 11° Spot



CTL94ME
 22° Medium



CTL94FL
 41° Flood



CTL94WF
 50° Wide Flood

Accessory
LF20 Tempered Glass Filters and Lenses

Finish
C Clear A Amber SL Soft Light B Blue SOL Solite LB Light Blue LS Linear Spread G Green 73 Spread R Red UV Optivex UV RO Rose Y Yellow

Replacement Optic and Reflectors
CTL94NS 13° Narrow Spot Optic Very Narrow Spot Optic not available as a replacement optic
CTL94SP 11° Spot Reflector
CTL94ME 24° Medium Reflector
CTL94FL 42° Flood Reflector
CTL94WF 51° Wide Flood Reflector

CTL94 C SERIES | Gallery XL Canopy Mount Luminaire

PRODUCT SPECIFICATIONS

PERFORMANCE SUMMARY

- 2700K, 3000K, 3500K and 4000K CCTs; 80 CRI min., 83 typical; high CRI of 90+ available
- Excellent fixture-to-fixture color consistency with a 2-step MacAdam Ellipse tolerance
- Precise beam control ensures that even at lower aiming angles the luminaire is glare free and quiet in the ceiling
- Full collection of accessories available to produce a myriad of filtering and framing effects
- Dimming is standard for all wattage options using compatible 120V Forward or Reverse OR 120V/277V 0-10V Dimming systems. For dimmer compatibility and performance, refer to the Dimming Specifications below.
- Integrated Rotary Dimmer option available; this option should not be used if luminaire will be controlled by other dimmers

CONSTRUCTION

- A revolutionary track head with superior optics designed to bring theatre grade beam control to traditional gallery and commercial track heads
- Constructed of die-cast aluminum, the cylindrical body provides thermal management for the luminaire
- Mono-Point Canopy Housing is constructed of cast aluminum, may be ceiling or wall mounted
- Lockable, precision aiming adjustment: 360°+ aiming horizontal, 220° vertical rotation
- Precision engineered Dual Lens Optic is used for the 8° Very Narrow Spot and the 11° Narrow Spot beam distributions. Design provides a tight beam angle and field to highlight target objects with minimal stray illumination.
- Specular Aluminum Reflectors are used for the 11° Spot, 22° Medium, 41° Flood, and 50° Wide Flood beam distributions. Reflectors are optically engineered for even illumination and glare control.
- Can accept up to two (2) LF20 Lenses/Filters, LA-45 Honeycomb Louver, FA-94 Snoot, or BD94-B Black Barn Doors, ordered separately. Snoot or Barn Door count as one (1) piece.
- Fixture weight: 5 LBS

DIMMING SPECIFICATIONS

- Incandescent 120V AC Dimmers adjust the light with *Forward Phase Control*, where the Dimmer “chops” the forward part of the AC Wave to deliver less or more power to the light source. No Neutral Wire Connection required.
- Electronic Low Voltage 120V AC Dimmers adjust the light with *Reverse Phase Control*, where the Dimmer “chops” the back part of the AC Wave to deliver less or more power to the light source. Neutral Wire Connection required.
- 0-10V Dimming may be used for 120V or 277V powered Luminaires by delivering a separate controlled DC voltage signal which adjusts the light output.

FORWARD/REVERSE PHASE COMPATIBLE DIMMERS			
MANUFACTURER	PRODUCT	MODEL	LIGHT OUTPUT
Leviton	Vizia	VPE06	4%-100%
Leviton	Decora	6673-10W	11%-100%
Lutron	Ariadni	TGCL-153P	0%-100%
Lutron	Diva	DVCL-153P	0%-100%
Lutron	Diva	DVELV303P	3%-100%
Lutron	Skylark	SELV300P	3%-100%
Lutron	Maestro	MAELV600	0%-100%
Lutron	Faedora	FAELV500	7%-100%
Lutron	Skylark C	SCL-153P	0%-100%
Lutron	Maestro C•L	MACL-153M	0%-99%
Lutron	RA2 Select	RRD-6CL	2%-98%

0-10V COMPATIBLE DIMMERS			
MANUFACTURER	PRODUCT	MODEL	LIGHT OUTPUT
Leviton	IlumaTech	IP710-DL	5% to 100%
Lutron	Diva	DVTV	5% to 100%
Lutron	Nova	NFTV	5% to 100%

NOTES

1. If light is measured, then the dimming range is based on light output. If light is not measured, then the dimming range is based on the percentage of output current.
2. Testing was performed with a single fixture connected to dimmer.
3. Testing has been performed on these dimmers, but this does not imply any warranty of compatibility.
4. Dimming performance can be influenced by different loads, as well as variations in dimmer switches within the same model.
5. Dimmer maximum load rating with LED may differ from published traditional source dimmer ratings. Consult manufacturer for maximum dimmer information.
6. Consult factory for additional dimming information.

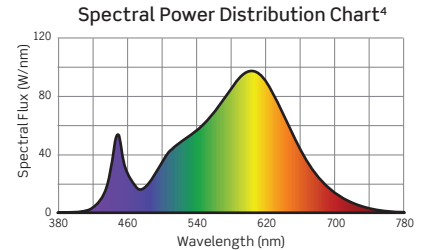
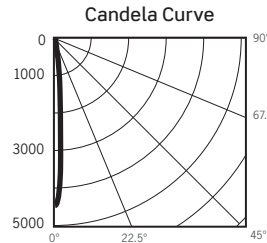
CTL94 SERIES | Gallery XL Track Luminaire Standard Luminous Photometry

CTL943VN3KD: 38W, 3000K, 83 CRI, VERY NARROW SPOT PC OPTIC

Test No. G24062604

Fixture Delivered Lumens: 1550.2
 Total Watts@120V: 37.4
 Lumens Per Watt: 41.5
 Center Beam Candle Power: 45100
 Beam Distribution: 8.4°
 Field Distribution: 16.6°
 Spacing Criterion: 0.17
 Color Rendering Index (CRI): 83.1
 Color Temperature (CCT): 3086K
 Designed for 50,000 Hour Lamp Life³

Intensity Distribution		
DISTANCE (FT.)	FOOTCANDLES (FC)	BEAM DIA. (FT.)
6 FT	1252.8	0.9
8 FT	704.7	1.2
10 FT	451.0	1.5
12 FT	313.2	1.8
14 FT	230.1	2.1
16 FT	176.2	2.3



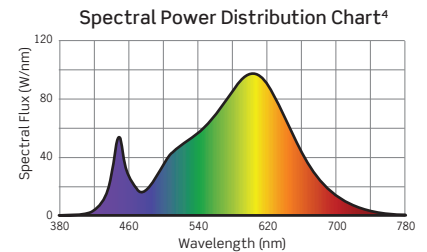
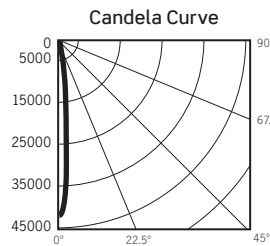
VERY NARROW SPOT OPTIC OUTPUT MULTIPLIERS			
13W	20W	29W	38W
0.48	0.66	0.87	1.00

CTL944NS3KD: 42W, 3000K, 83 CRI, NARROW SPOT PC OPTIC

Test No. G24062603

Fixture Delivered Lumens: 1948.8
 Total Watts@120V: 41.0
 Lumens Per Watt: 47.6
 Center Beam Candle Power: 42188
 Beam Distribution: 10.6°
 Field Distribution: 22.0°
 Spacing Criterion: 0.20
 Color Rendering Index (CRI): 83.1
 Color Temperature (CCT): 3086K
 Designed for 50,000 Hour Lamp Life³

Intensity Distribution		
DISTANCE (FT.)	FOOTCANDLES (FC)	BEAM DIA. (FT.)
6 FT	1171.9	1.1
8 FT	659.2	1.5
10 FT	421.9	1.9
12 FT	293.0	2.2
14 FT	215.2	2.6
16 FT	164.8	3.0



NARROW SPOT OPTIC OUTPUT MULTIPLIERS			
13W	20W	29W	38W
0.36	0.53	0.75	0.92

1. Accuracy of Rendering Colors 2. Color Appearance of Light Source 3. Dependent on Surrounding Temperatures 4. Colors Present within the Light Source

PHOTOMETRIC MULTIPLICATION FACTORS

Lumen output values fluctuate based on Color Temperature (CCT), Color Rendering Index (CRI), and Luminaire Wattage/Output. To estimate lumen output of the various options, multiply the 3000K standard CRI results by the following:

CCT	CCT MULTIPLIERS	
	STANDARD CRI	HIGH (90+) CRI
2700K	0.98	0.81
3000K	1.00	0.85
3500K	1.01	0.86
4000K	1.02	0.89

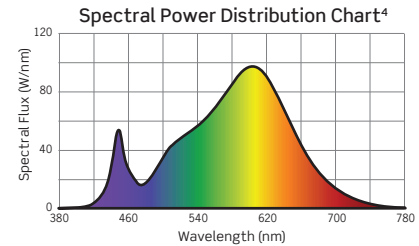
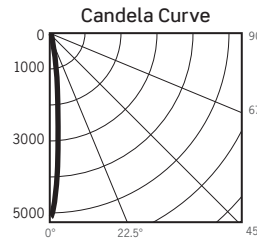
CTL94 SERIES | Gallery XL Track Luminaire Standard Luminous Photometry

CTL945SP3KD: 48W, 3000K, 83 CRI, SPOT ALUMINUM REFLECTOR

Test No. G24062701

Fixture Delivered Lumens: 4051.4
 Total Watts@120V: 47.4
 Lumens Per Watt: 85.5
 Center Beam Candle Power: 51787
 Beam Distribution: 10.8°
 Field Distribution: 26.2°
 Spacing Criterion: 0.23
 Color Rendering Index (CRI): 83.1
 Color Temperature (CCT): 3086K
 Designed for 50,000 Hour Lamp Life³

Intensity Distribution		
DISTANCE (FT.)	FOOTCANDLES (FC)	BEAM DIA. (FT.)
6 FT	1438.5	1.1
8 FT	809.2	1.5
10 FT	517.9	1.9
12 FT	359.9	2.3
14 FT	264.2	2.6
16 FT	202.3	3.0

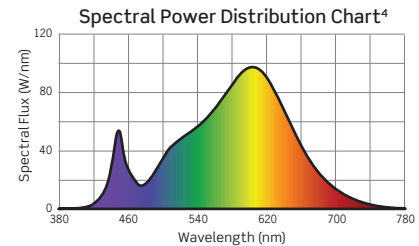
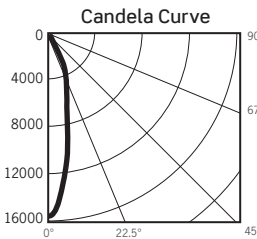


CTL945ME3KD: 48W, 3000K, 83 CRI, MEDIUM ALUMINUM REFLECTOR

Test No. G24062702

Fixture Delivered Lumens: 4226.1
 Total Watts@120V: 47.4
 Lumens Per Watt: 90.0
 Center Beam Candle Power: 15614
 Beam Distribution: 22.3°
 Field Distribution: 52.2°
 Spacing Criterion: 0.49
 Color Rendering Index (CRI): 83.1
 Color Temperature (CCT): 3086K
 Designed for 50,000 Hour Lamp Life³

Intensity Distribution		
DISTANCE (FT.)	FOOTCANDLES (FC)	BEAM DIA. (FT.)
6 FT	433.7	2.4
8 FT	244.0	3.2
10 FT	156.1	3.9
12 FT	108.4	4.7
14 FT	79.7	5.5
16 FT	61.0	6.3

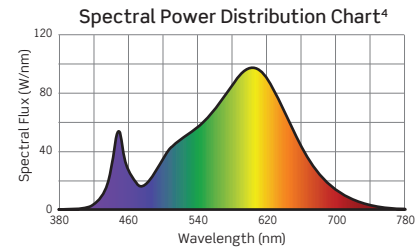
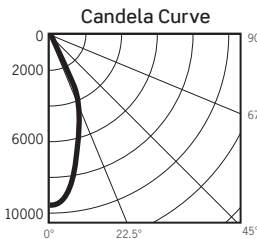


CTL945FL3KD: 48W, 3000K, 83 CRI, FLOOD ALUMINUM REFLECTOR

Test No. G24062703

Fixture Delivered Lumens: 4462.9
 Total Watts@120V: 47.4
 Lumens Per Watt: 94.2
 Center Beam Candle Power: 9572
 Beam Distribution: 41.3°
 Field Distribution: 65.8°
 Spacing Criterion: 0.66
 Color Rendering Index (CRI): 83.1
 Color Temperature (CCT): 3086K
 Designed for 50,000 Hour Lamp Life³

Intensity Distribution		
DISTANCE (FT.)	FOOTCANDLES (FC)	BEAM DIA. (FT.)
6 FT	265.9	4.5
8 FT	149.6	6.0
10 FT	95.7	7.5
12 FT	66.5	9.0
14 FT	48.8	10.5
16 FT	37.4	12.1

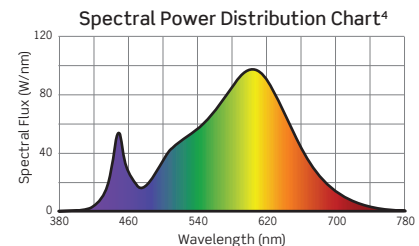
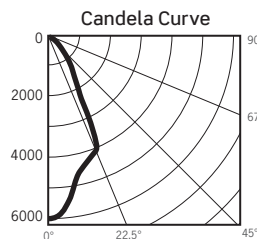


CTL945SP3KD: 48W, 3000K, 83 CRI, WIDE FLOOD ALUMINUM REFLECTOR

Test No. G24062801

Fixture Delivered Lumens: 4397.6
 Total Watts@120V: 47.4
 Lumens Per Watt: 92.8
 Center Beam Candle Power: 6004
 Beam Distribution: 50.4°
 Field Distribution: 82.9°
 Spacing Criterion: 0.75
 Color Rendering Index (CRI): 83.1
 Color Temperature (CCT): 3086K
 Designed for 50,000 Hour Lamp Life³

Intensity Distribution		
DISTANCE (FT.)	FOOTCANDLES (FC)	BEAM DIA. (FT.)
6 FT	166.8	5.7
8 FT	93.8	7.5
10 FT	60.0	9.4
12 FT	41.7	11.3
14 FT	30.6	13.2
16 FT	23.5	15.1



1. Accuracy of Rendering Colors 2. Color Appearance of Light Source 3. Dependent on Surrounding Temperatures 4. Colors Present within the Light Source

PHOTOMETRIC MULTIPLICATION FACTORS

Lumen output values fluctuate based on Color Temperature (CCT), Color Rendering Index (CRI), and Luminaire Wattage/Output. To estimate lumen output of the various options, multiply the 3000K standard CRI results by the following:

CCT	CCT MULTIPLIERS	
	STD. CRI	HIGH (90+) CRI
2700K	0.98	0.81
3000K	1.00	0.85
3500K	1.01	0.86
4000K	1.02	0.89

OUTPUT MULTIPLIERS					
13W	20W	29W	38W	42W	49W
0.32	0.47	0.66	0.82	0.90	1.00

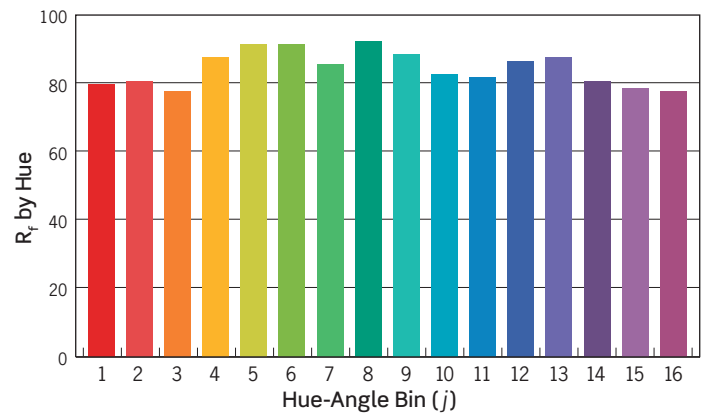
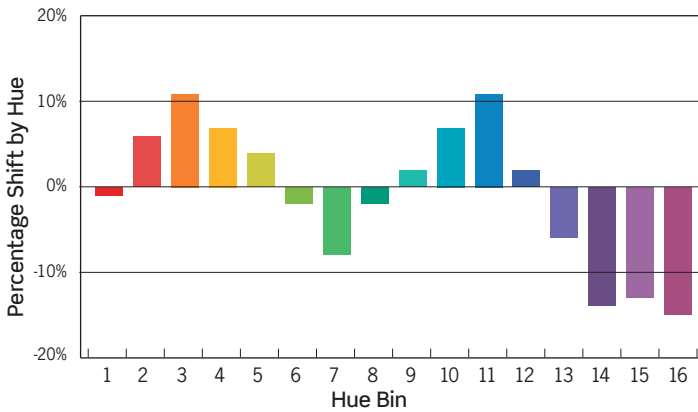
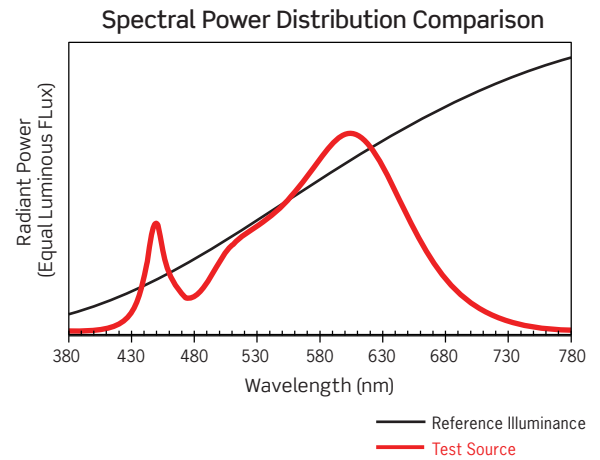
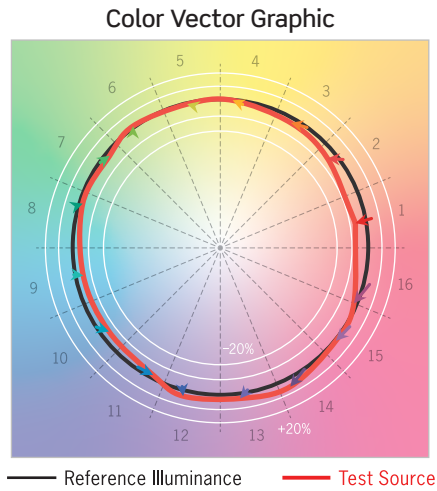
CTL94 SERIES | Gallery XL Track Luminaire Standard Luminous Photometry

TM-30 DATA: CTL945ME3KD

ANSI/IES TM-30-18 Color Rendition Report Test No. S22031501

Colors are for visual orientation purposes only

R_f	86
R_g	96
CCT(K)	3086K
D_{uv}	0.0019
u^l	0.2469
v^l	0.5223



HUE BIN	1	2	3	4	5	6	7	8	9	10	11	12	13	14	15	16
HUE SHIFT	-1%	6%	11%	7%	4%	-2%	-7%	-2%	2%	7%	11%	2%	-6%	-14%	-13%	-15%
R _f VALUE	81	82	79	89	93	93	87	94	90	84	83	88	89	82	80	79