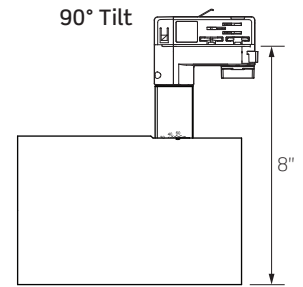
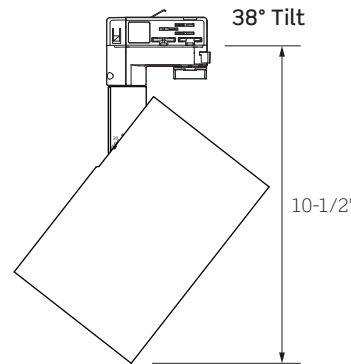
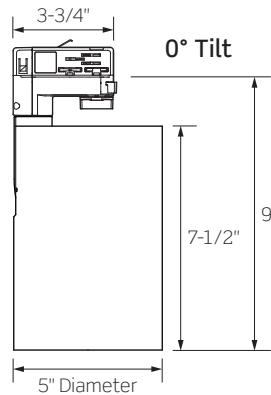


OTL94 SERIES | Gallery XL Track Luminaire with 0-10V Dimming Track System Adapter with Warm Dim LED



High performance track luminaire delivering high outputs and superior beam control

- Clean aesthetics, simple form
- Multiple beam distributions
- Delivering up to 2400 Lumens
- Warm Dim LED: Light that warms as it Dims, 3000K to 1800K



	CTL940	CTL943
WATTAGE	13W	35W
LUMEN OUTPUT ¹ BY BEAM SPREAD <i>Beam Range: 8° to 50°</i>		
Very Narrow Spot Optic	578Lm	N/A
Narrow Spot Optic	N/A	1209 Lm
Spot Reflector	864 Lm	2032 Lm
Medium Reflector	855 Lm	2291 Lm
Flood Reflector	894 Lm	2374 Lm
Wide Flood Reflector	884 Lm	2372 Lm
COLOR TEMPERATURE	3000K to 1800K (See Dimming Compatibility for low end CCT)	
CRI	90	
FINISHES	Matte Black / Matte White / Matte Silver	
DRIVER INPUT VOLTAGE	120V or 277V, 50/60Hz	
DIMMING TYPE	0-10V Dimming	
COMPATIBILITY	Compatible with the ConTech Lighting O2CD 0-10V Dimming Track System	
LISTINGS	cCSAus Certified for use in the U.S. and Canada; Suitable for Dry Locations	
WARRANTY	Five (5) year replacement after date of purchase	
SYSTEM RATING	50,000 Hours @ 70% Lumen Maintenance	

1. Approximate lumen output based on 3000K performance; see photometric test results for additional information

OTL94 SERIES | Gallery XL Track Luminaire with 0-10V Dimming Track System Adapter with Warm Dim LED

ORDERING INFORMATION

Example Order: OTL942VN3K12D2-P

LED Series	Beam: Optic or Reflector	CCT/CRI	Driver ³	Finish
OTL940 13W OTL943 35W	PC Optics Intensity at Nadir, Narrow Field VN² Very Narrow Spot: 8° Beam, 17° Field NS Narrow Spot: 11° Beam, 22° Field	Reflectors: Well Defined Beams, Smooth Field SP Spot: 11° Beam, 26° Field ME Medium: 22° Beam, 52° Field FL Flood: 41° Beam, 66° Field WF Wide Flood: 50° Beam, 83° Field	95 CRI WD Warm Dim 3000K to 1800K 12D2 120V 0-10V Dimming 27D2 277V 0-10V Dimming	B Matte Black P Matte White S Matte Silver

2. Very Narrow Spot (VN) only available up to Series 3 (CTL943/38W)
 3. Selected Driver Voltage MUST match Track System Voltage

ACCESSORY & REPLACEMENT OPTIC ORDERING INFORMATION

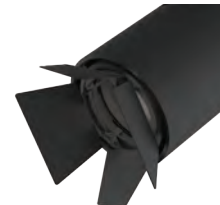
Each Gallery XL Luminaire comes ready to hold up to two (2) Accessories; Snoot or Barn Door count as one (1) piece



FA-94 Series
*Snoot with
 Optional Cross Blades*
 Exterior painted per finish
 selection: Black (B), White (P)
 or Silver (S). Interior and Cross
 Blades are always Black.



LA-45 Series
Honeycomb Louver
 3-3/4-Inch Diameter;
 Black finish



BD-94 Series
Barn Doors
 Black finish

Accessory
FA-94 Snoot with optional Cross Blades

Finish
B Matte Black P Matte White S Matte Silver

Accessory
LA-45 Black Honeycomb Louver

Accessory
BD94 Barn Doors

Finish
B Matte Black



LF20 Series
*Tempered Glass
 Filters and Lenses*
 3-3/4-Inch Diameter, 1/8-Inch Thick, typ.



CTL94NS
 11° Narrow Spot



CTL94SP
 11° Spot



CTL94ME
 22° Medium



CTL94FL
 41° Flood



CTL94WF
 50° Wide Flood

Accessory
LF20 Tempered Glass Filters and Lenses

Finish
C Clear A Amber SL Soft Light B Blue SOL Solite LB Light Blue LS Linear Spread G Green 73 Spread R Red UV Optivex UV RO Rose Y Yellow

Replacement Optic and Reflectors
CTL94NS 13° Narrow Spot Optic Very Narrow Spot Optic not available as a replacement optic CTL94SP 11° Spot Reflector CTL94ME 24° Medium Reflector CTL94FL 42° Flood Reflector CTL94WF 51° Wide Flood Reflector

OTL94 SERIES | Gallery XL Track Luminaire with 0-10V Dimming Track System Adapter with Warm Dim LED

PRODUCT SPECIFICATIONS

PERFORMANCE SUMMARY

- Light that Warms as it Dims
- CCT Range from 3000K to 1800K (3000K at full brightness to 1800K when dimmed), CRI of 90
- Excellent fixture-to-fixture color consistency within a 3-step MacAdam Ellipse tolerance
- Precise beam control ensures that even at lower aiming angles the luminaire is glare free and quiet in the ceiling
- Full collection of accessories available to produce a myriad of filtering and framing effects
- 120V or 277V 0-10V Dimming. For dimmer compatibility and performance, refer to the Dimming Specifications below.

CONSTRUCTION

- A revolutionary track head with superior optics designed to bring theatre grade beam control to traditional gallery and commercial track heads and mono-point luminaires
- Constructed with an integrated adapter suitable for use with the ConTech O2CD 0-10V Dimming Track System

- The luminaire is constructed of die-cast aluminum, the cylindrical body providing thermal management
- Adjustable, lockable aiming arm with 0° to 100° tilt for precision aiming; 365° horizontal rotation
- Precision engineered Dual Lens Optic used for 8° Very Narrow Spot and 11° Narrow Spot beam distributions. Design provides a tight beam angle and field to highlight target objects with minimal stray illumination.
- Specular Aluminum Reflectors are used for the 11° Spot, 22° Medium, 41° Flood, and 50° Wide Flood beam distributions. Reflectors are optically engineered for even illumination and glare control.
- Can accept up to two (2) LF20 Lenses/Filters, LA-45 Honeycomb Louver, FA-94 Snoot, or BD94-B Black Barn Doors, ordered separately. Snoot or Barn Door count as one (1) piece.
- Fixture weight: 5 LBS

FIXTURE COMPATIBILITY

- ConTech OTL Track Luminaires are compatible with the ConTech Lighting O2CD 0-10V Dimming Track System

DIMMING SPECIFICATIONS

- 0-10V Dimming may be used for 120V or 277V powered Luminaires by delivering a separate controlled DC voltage signal which adjusts the light output.

0-10V COMPATIBLE DIMMERS			
MANUFACTURER	PRODUCT	MODEL	LIGHT OUTPUT
Leviton	IlumaTech	IP710-DL	5% to 100%
Lutron	Diva	DVTV	5% to 100%
Lutron	Nova	NFTV	5% to 100%

NOTES

1. If light is measured, then the dimming range is based on light output. If light is not measured, then the dimming range is based on the percentage of output current.
2. Testing was performed with a single fixture connected to dimmer.
3. Testing has been performed on these dimmers, but this does not imply any warranty of compatibility.
4. Dimming performance can be influenced by different loads, as well as variations in dimmer switches within the same model.
5. Dimmer maximum load rating with LED may differ from published traditional source dimmer ratings. Consult manufacturer for maximum dimmer information.
6. Consult factory for additional dimming information.

CTL94 SERIES | Gallery XL Luminaire Warm Dim LED Photometry

CTL940VNWDD: 13W, 3000K, 90 CRI, VERY NARROW SPOT PC OPTIC

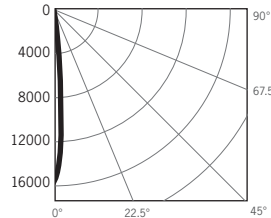
Test No. G22042503

Fixture Delivered Lumens: 577.6
 Total Watts@120V: 13.6
 Lumens Per Watt: 42.47
 Center Beam Candle Power: 15623
 Beam Distribution: 8.9°
 Spacing Criterion: 0.15
 Color Rendering Index (CRI)¹: 90.2
 Color Temperature (CCT)²: 3021K
 Designed for 50,000 Hour Lamp Life³

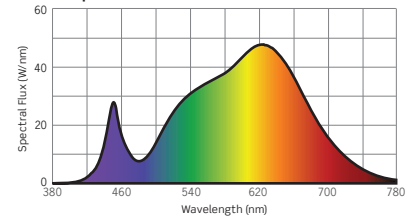
Intensity Distribution

DISTANCE (FT.)	FOOTCANDLES (FC)	BEAM DIA. (FT.)
4 FT	976.4	0.6
6 FT	434.0	0.9
8 FT	244.1	1.3
10 FT	156.2	1.6
12 FT	108.5	1.9
14 FT	79.7	2.2

Candela Curve



Spectral Power Distribution Chart⁴



CTL943NSWDD: 35W, 3000K, 90 CRI, NARROW SPOT PC OPTIC

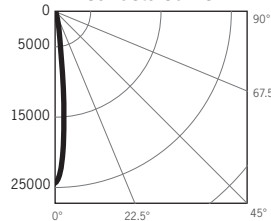
Test No. G22030101

Fixture Delivered Lumens: 1209.4
 Total Watts@120V: 34.7
 Lumens Per Watt: 34.9
 Center Beam Candle Power: 24375
 Beam Distribution: 11.7°
 Spacing Criterion: 0.20
 Color Rendering Index (CRI)¹: 90.2
 Color Temperature (CCT)²: 3021K
 Designed for 50,000 Hour Lamp Life³

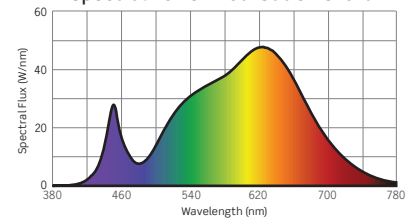
Intensity Distribution

DISTANCE (FT.)	FOOTCANDLES (FC)	BEAM DIA. (FT.)
4 FT	1523.4	0.8
6 FT	677.1	1.2
8 FT	380.9	1.6
10 FT	243.8	2.1
12 FT	169.3	2.5
14 FT	124.4	2.9

Candela Curve



Spectral Power Distribution Chart⁴



1. Accuracy of Rendering Colors 2. Color Appearance of Light Source 3. Dependent on Surrounding Temperatures 4. Colors Present within the Light Source

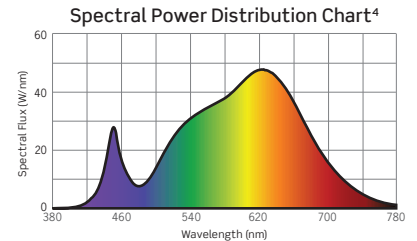
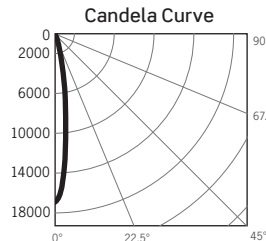
CTL94 SERIES | Gallery XL Luminaire Warm Dim LED Photometry

CTL943SPWDD: 35W, 3000K, 90 CRI, SPOT REFLECTOR

Test No. G22030102

Fixture Delivered Lumens: 2032.2
 Total Watts@120V: 34.7
 Lumens Per Watt: 58.57
 Center Beam Candle Power: 16935
 Beam Distribution: 14.8°
 Spacing Criterion: 0.28
 Color Rendering Index (CRI)¹: 90.2
 Color Temperature (CCT)²: 3021K
 Designed for 50,000 Hour Lamp Life³

Intensity Distribution		
DISTANCE (FT.)	FOOTCANDLES (FC)	BEAM DIA. (FT.)
4 FT	1058.4	1.0
6 FT	470.4	1.6
8 FT	264.6	2.1
10 FT	169.3	2.6
12 FT	117.6	3.1
14 FT	86.4	3.7

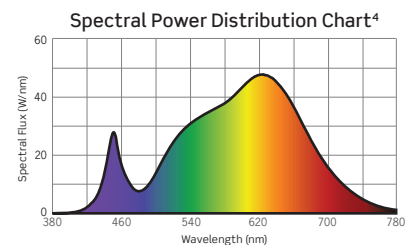
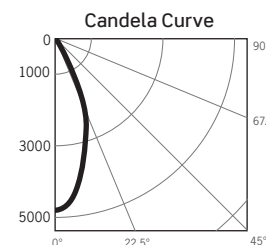


CTL943MEWDD: 35W, 3000K, 90 CRI, MEDIUM REFLECTOR

Test No. G22030103

Fixture Delivered Lumens: 2290.6
 Total Watts@120V: 34.7
 Lumens Per Watt: 66.0
 Center Beam Candle Power: 7447
 Beam Distribution: 26.1°
 Spacing Criterion: 0.52
 Color Rendering Index (CRI)¹: 90.2
 Color Temperature (CCT)²: 3021K
 Designed for 50,000 Hour Lamp Life³

Intensity Distribution		
DISTANCE (FT.)	FOOTCANDLES (FC)	BEAM DIA. (FT.)
4 FT	465.4	1.9
6 FT	206.9	2.8
8 FT	116.4	3.7
10 FT	74.5	4.6
12 FT	51.7	5.6
14 FT	38.0	6.5

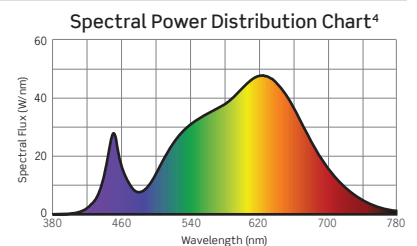
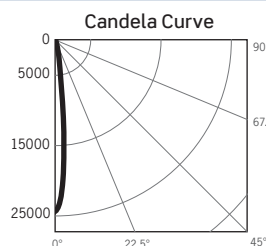


CTL943NSWDD: 35W, 3000K, 90 CRI, FLOOD REFLECTOR

Test No. G22030104

Fixture Delivered Lumens: 2374.1
 Total Watts@120V: 34.7
 Lumens Per Watt: 68.4
 Center Beam Candle Power: 4784
 Beam Distribution: 41.2°
 Spacing Criterion: 0.66
 Color Rendering Index (CRI)¹: 90.2
 Color Temperature (CCT)²: 3021K
 Designed for 50,000 Hour Lamp Life³

Intensity Distribution		
DISTANCE (FT.)	FOOTCANDLES (FC)	BEAM DIA. (FT.)
4 FT	299.0	3.0
6 FT	132.9	4.5
8 FT	74.7	6.0
10 FT	47.8	7.5
12 FT	33.2	9.0
14 FT	24.4	10.5

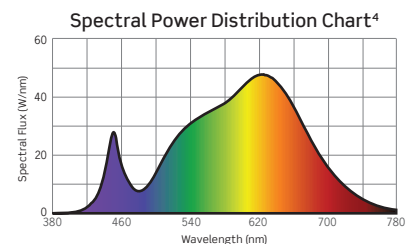
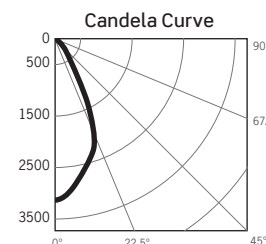


CTL943NSWDD: 35W, 3000K, 90 CRI, WIDE FLOOD REFLECTOR

Test No. G22030105

Fixture Delivered Lumens: 2372.4
 Total Watts@120V: 34.7
 Lumens Per Watt: 68.4
 Center Beam Candle Power: 3128
 Beam Distribution: 50.9°
 Spacing Criterion: 0.76
 Color Rendering Index (CRI)¹: 90.2
 Color Temperature (CCT)²: 3021K
 Designed for 50,000 Hour Lamp Life³

Intensity Distribution		
DISTANCE (FT.)	FOOTCANDLES (FC)	BEAM DIA. (FT.)
4 FT	195.5	3.8
6 FT	86.9	5.7
8 FT	48.9	7.6
10 FT	31.3	9.5
12 FT	21.7	11.4
14 FT	16.0	13.3



1. Accuracy of Rendering Colors 2. Color Appearance of Light Source 3. Dependent on Surrounding Temperatures 4. Colors Present within the Light Source

PHOTOMETRIC MULTIPLICATION FACTORS

Lumen output values fluctuate based on Luminaire Wattage/Output. To estimate lumen output of the various options, multiply the results by the following:

REFLECTOR OUTPUT MULTIPLIERS	
13W	35W
0.48	1.00

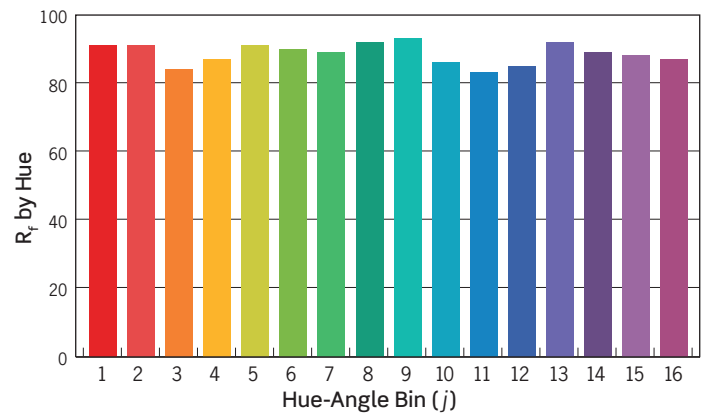
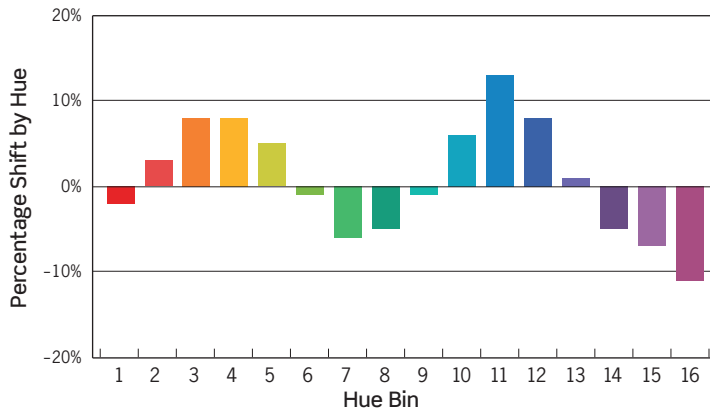
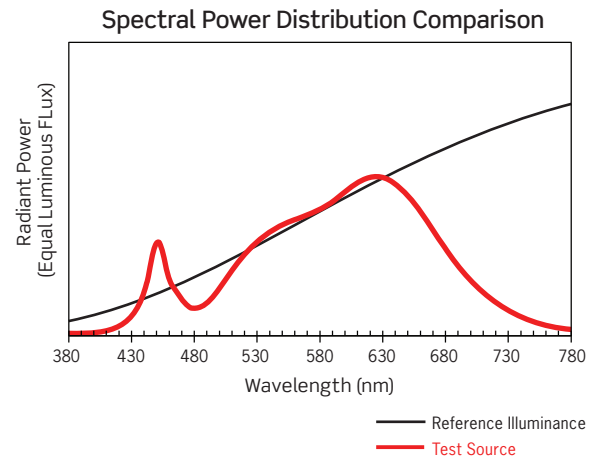
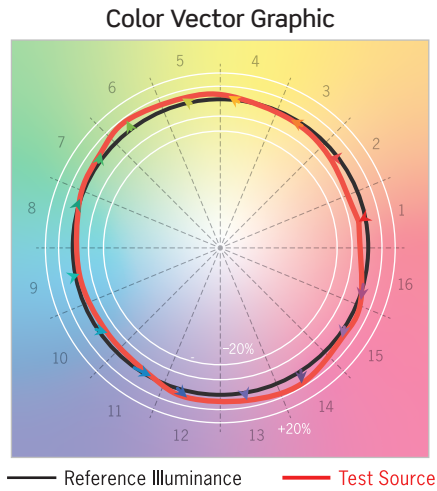
CTL94 SERIES | Gallery XL Luminaire Warm Dim LED Photometry

TM-30 DATA: CTL943MEWDD - AT FULL BRIGHTNESS

ANSI/IES TM-30-18 Color Rendition Report Test No. S22030101

Colors are for visual orientation purposes only

R_f	89
R_g	102
CCT(K)	3021K
D_{uv}	-0.0009
u^l	0.2502
v^l	0.5198



HUE BIN	1	2	3	4	5	6	7	8	9	10	11	12	13	14	15	16
HUE SHIFT	-2%	3%	8%	8%	5%	-1%	-6%	-5%	-1%	6%	13%	8%	1%	-5%	-7%	-11%
R_f VALUE	91	91	84	87	91	90	89	92	93	86	83	85	92	89	88	87