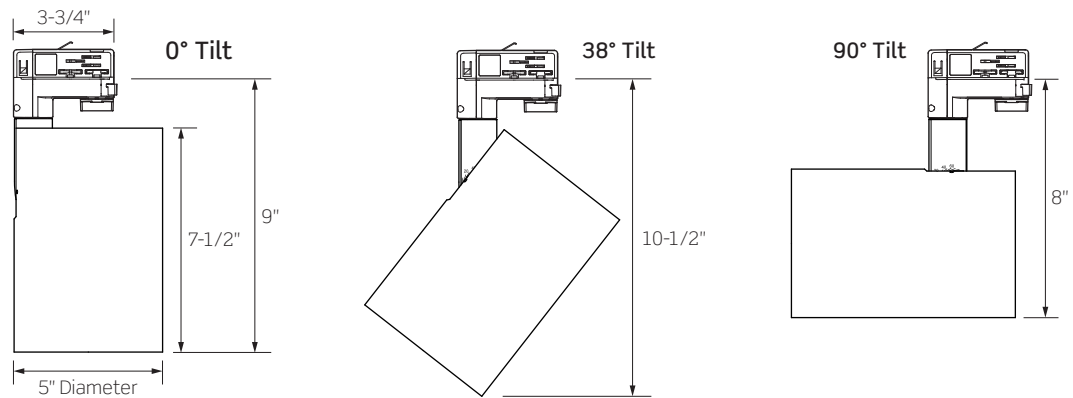


**OTL94 SERIES** | Gallery XL Track Luminaire featuring Xicato® LED with 0-10V Dimming Track System Adapter



High performance track luminaire featuring the Xicato 95 CRI Series LED; designed to perfectly emulate natural light sources with precise color rendering by CIE or IES standards



	OTL940	OTL941	OTL942	OTL943	OTL944
WATTAGE	13W	19W	27W	35W	41W
LUMEN OUTPUT <sup>1</sup> BY BEAM SPREAD Beam Range: 8° to 50°					
Very Narrow Spot Optic	610Lm	N/A	N/A	N/A	N/A
Narrow Spot Optic	540Lm	790Lm	1043Lm	1370Lm	1491Lm
Spot Reflector	975Lm	1381Lm	1896Lm	2380Lm	2708Lm
Medium Reflector	976Lm	1384Lm	1898Lm	2375Lm	2698Lm
Flood Reflector	1017Lm	1440Lm	1977Lm	2485Lm	2824Lm
Wide Flood Reflector	984Lm	1393Lm	1912Lm	2404Lm	2732Lm
COLOR TEMPERATURE	2700K / 3000K / 3500K / 4000K				
CRI	95				
FINISHES	Matte Black / Matte White / Matte Silver				
DRIVER INPUT VOLTAGE	120V or 277V, 50/60Hz				
DIMMING TYPE	0-10V Dimming				
COMPATIBILITY	Compatible with the ConTech Lighting O2CD 0-10V Dimming Track System				
LISTINGS	cCSAus Certified for use in the U.S. and Canada; Suitable for Dry Locations				
WARRANTY	Five (5) year replacement after date of purchase				
SYSTEM RATING	50,000 Hours @ 70% Lumen Maintenance				

1. Approximate lumen output based on 3000K performance; see photometric test results for additional information

## OTL94 SERIES | Gallery XL Track Luminaire featuring Xicato® LED with 0-10V Dimming Track System Adapter

### ORDERING INFORMATION

Example Order: OTL942VN3K12D2-P

LED Series	Beam: Optic or Reflector	CCT/CRI	Driver <sup>3</sup>	Finish	
<b>OTL940</b> 13W <b>OTL941</b> 20W <b>OTL942</b> 29W <b>OTL943</b> 38W <b>OTL944</b> 42W	<b>PC Optics</b> Intensity at Nadir, Narrow Field <b>VN<sup>2</sup></b> Very Narrow Spot: 8° Beam, 17° Field <b>NS</b> Narrow Spot: 11° Beam, 22° Field	<b>Reflectors:</b> Well Defined Beams, Smooth Field <b>SP</b> Spot: 11° Beam, 26° Field <b>ME</b> Medium: 22° Beam, 52° Field <b>FL</b> Flood: 41° Beam, 66° Field <b>WF</b> Wide Flood: 50° Beam, 83° Field	<b>95 CRI</b> <b>27XC</b> 2700K <b>3XC</b> 3000K <b>35XC</b> 3500K <b>4XC</b> 4000K Vibrant Series, 95 CRI <b>3XV</b> 3000K	<b>12D2</b> 120V 0-10V Dimming <b>27D2</b> 277V 0-10V Dimming	<b>B</b> Matte Black <b>P</b> Matte White <b>S</b> Matte Silver

2. Very Narrow Spot (VN) only available up to Series Ø (CTL940/13W)  
 3. Selected Driver Voltage MUST match Track System Voltage

### ACCESSORY & REPLACEMENT OPTIC ORDERING INFORMATION

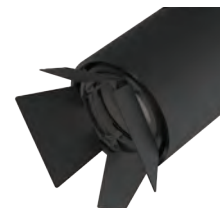
Each Gallery XL Luminaire comes ready to hold up to two (2) Accessories; Snoot or Barn Door count as one (1) piece



**FA-94 Series**  
*Snoot with Optional Cross Blades*  
 Exterior painted per finish selection: Black (B), White (P) or Silver (S). Interior and Cross Blades are always Black.



**LA-45 Series**  
*Honeycomb Louver*  
 3-3/4-Inch Diameter; Black finish



**BD-94 Series**  
*Barn Doors*  
 Black finish

Accessory
<b>FA-94</b> Snoot with optional Cross Blades

Finish
<b>B</b> Matte Black <b>P</b> Matte White <b>S</b> Matte Silver

Accessory
<b>LA-45</b> Black Honeycomb Louver

Accessory
<b>BD94</b> Barn Doors

Finish
<b>B</b> Matte Black



**LF20 Series**  
*Tempered Glass Filters and Lenses*  
 3-3/4-Inch Diameter, 1/8-Inch Thick, typ.



**CTL94NS**  
 11° Narrow Spot



**CTL94SP**  
 11° Spot



**CTL94ME**  
 22° Medium



**CTL94FL**  
 41° Flood



**CTL94WF**  
 50° Wide Flood

Accessory
<b>LF20</b> Tempered Glass Filters and Lenses

Finish
<b>C</b> Clear <b>A</b> Amber <b>SL</b> Soft Light <b>B</b> Blue <b>SOL</b> Solite <b>LB</b> Light Blue <b>LS</b> Linear Spread <b>G</b> Green <b>73</b> Spread <b>R</b> Red <b>UV</b> Optivex UV <b>RO</b> Rose <b>Y</b> Yellow

Replacement Optic and Reflectors
<b>CTL94NS</b> 13° Narrow Spot Optic Very Narrow Spot Optic not available as a replacement optic
<b>CTL94SP</b> 11° Spot Reflector
<b>CTL94ME</b> 24° Medium Reflector
<b>CTL94FL</b> 42° Flood Reflector
<b>CTL94WF</b> 51° Wide Flood Reflector

# OTL94 SERIES | Gallery XL Track Luminaire featuring Xicato® LED with 0-10V Dimming Track System Adapter

## PRODUCT SPECIFICATIONS

### PERFORMANCE SUMMARY

- Select from 2700K, 3000K, 3500K and 4000K color temperatures; all with a CRI of 80 minimum, 83 typical; high CRI of 90+ available
- Excellent fixture-to-fixture color consistency within a 3-step MacAdam Ellipse tolerance
- Precise beam control ensures that even at lower aiming angles the luminaire is glare free and quiet in the ceiling
- Full collection of accessories available to produce a myriad of filtering and framing effects
- 120V or 277V 0-10V Dimming. For dimmer compatibility and performance, refer to the Dimming Specifications below.

### CONSTRUCTION

- A revolutionary track head with superior optics designed to bring theatre grade beam control to traditional gallery and commercial track heads and mono-point luminaires
- Constructed with an integrated adapter suitable for use with the ConTech O2CD 0-10V Dimming Track System
- The luminaire is constructed of die-cast aluminum, the cylindrical body providing thermal management

- Adjustable, lockable aiming arm with 0° to 100° tilt for precision aiming; 365° horizontal rotation
- Precision engineered Dual Lens Optic used for 8° Very Narrow Spot and 11° Narrow Spot beam distributions. Design provides a tight beam angle and field to highlight target objects with minimal stray illumination.
- Specular Aluminum Reflectors are used for the 11° Spot, 22° Medium, 41° Flood, and 50° Wide Flood beam distributions. Reflectors are optically engineered for even illumination and glare control.
- Can accept up to two (2) LF20 Lenses/Filters, LA-45 Honeycomb Louver, FA-94 Snoot, or BD94-B Black Barn Doors, ordered separately. Snoot or Barn Door count as one (1) piece.
- Fixture weight: 5 LBS

### FIXTURE COMPATIBILITY

- ConTech OTL Track Luminaires are compatible with the ConTech Lighting O2CD 0-10V Dimming Track System

## DIMMING SPECIFICATIONS

- 0-10V Dimming may be used for 120V or 277V powered Luminaires by delivering a separate controlled DC voltage signal which adjusts the light output.

0-10V COMPATIBLE DIMMERS			
MANUFACTURER	PRODUCT	MODEL	LIGHT OUTPUT
Leviton	IlumaTech	IP710-DL	5% to 100%
Lutron	Diva	DVTV	5% to 100%
Lutron	Nova	NFTV	5% to 100%

### NOTES

1. If light is measured, then the dimming range is based on light output. If light is not measured, then the dimming range is based on the percentage of output current.
2. Testing was performed with a single fixture connected to dimmer.
3. Testing has been performed on these dimmers, but this does not imply any warranty of compatibility.
4. Dimming performance can be influenced by different loads, as well as variations in dimmer switches within the same model.
5. Dimmer maximum load rating with LED may differ from published traditional source dimmer ratings. Consult manufacturer for maximum dimmer information.
6. Consult factory for additional dimming information.

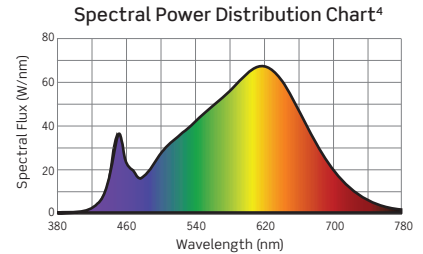
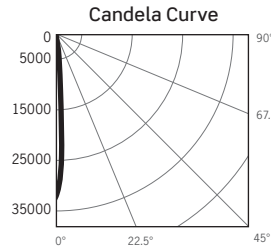
## CTL94 SERIES | Gallery XL Track Luminaire with Xicato® LED: Photometry

### CTL940VN3XCD: 13W, 3000K, 95 CRI, VERY NARROW SPOT PC OPTIC

Test No. G22062604

Fixture Delivered Lumens: 614.3  
 Total Watts@120V: 13.1  
 Lumens Per Watt: 44.5  
 Center Beam Candle Power: 31786  
 Beam Distribution: 7.0°  
 Field Distribution: 11.4°  
 Spacing Criterion: 0.12  
 Color Rendering Index (CRI)<sup>1</sup>: 97.9  
 Color Temperature (CCT)<sup>2</sup>: 3074K  
 Designed for 50,000 Hour Lamp Life<sup>3</sup>

Intensity Distribution		
DISTANCE (FT.)	FOOTCANDLES (FC)	BEAM DIA. (FT.)
6 FT	882.9	0.7
8 FT	496.7	1.0
10 FT	317.9	1.2
12 FT	220.7	1.5
14 FT	162.2	1.7
16 FT	124.2	2.0



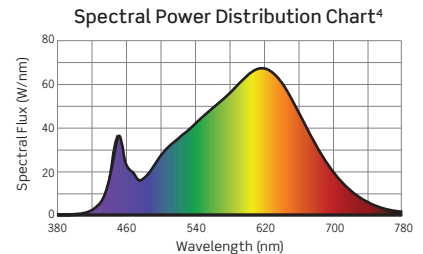
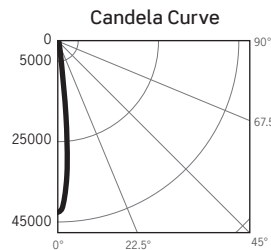
VERY NARROW SPOT OPTIC AVAILABLE ONLY FOR SERIES Ø (13W CTL940)

### CTL944NS3XCD: 41W, 3000K, 95 CRI, NARROW SPOT PC OPTIC

Test No. G22033001

Fixture Delivered Lumens: 1491.0  
 Total Watts@120V: 40.9  
 Lumens Per Watt: 36.5  
 Center Beam Candle Power: 42680  
 Beam Distribution: 10.8°  
 Field Distribution: 16.2°  
 Spacing Criterion: 0.17  
 Color Rendering Index (CRI)<sup>1</sup>: 97.9  
 Color Temperature (CCT)<sup>2</sup>: 3074K  
 Designed for 50,000 Hour Lamp Life<sup>3</sup>

Intensity Distribution		
DISTANCE (FT.)	FOOTCANDLES (FC)	BEAM DIA. (FT.)
6 FT	1185.6	1.1
8 FT	666.9	1.5
10 FT	426.8	1.9
12 FT	296.4	2.3
14 FT	217.8	2.6
16 FT	116.7	3.0



NARROW SPOT OPTIC OUTPUT MULTIPLIERS			
13W	19W	27W	35W
0.36	0.51	0.70	0.88

1. Accuracy of Rendering Colors 2. Color Appearance of Light Source 3. Dependent on Surrounding Temperatures 4. Colors Present within the Light Source

### PHOTOMETRIC MULTIPLICATION FACTORS

Lumen output values fluctuate based on Color Temperature (CCT), Color Rendering Index (CRI), and Luminaire Wattage/Output. To estimate lumen output of the various options, multiply the 3000K standard CRI results by the following:

CCT	CCT MULTIPLIERS	
	STD. CRI	VIBRANT CRI
2700K	0.92	N/A
3000K	1.00	1.00
3500K	1.05	N/A
4000K	1.10	N/A

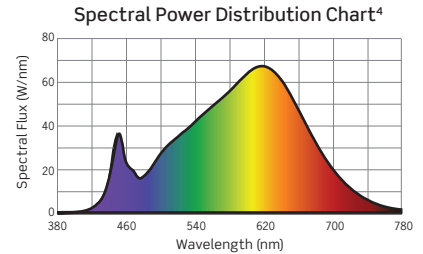
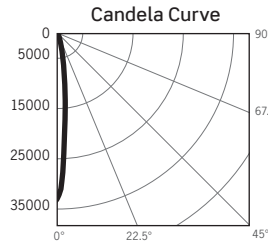
**CTL94 SERIES** | Gallery XL Track Luminaire with Xicato® LED: Photometry

**CTL944SP3XCD: 41W, 3000K, 95 CRI, SPOT ALZAK REFLECTOR**

Test No. G22033002

Fixture Delivered Lumens: 2707.7  
Total Watts@120V: 41.0  
Lumens Per Watt: 66.2  
Center Beam Candle Power: 32817  
Beam Distribution: 11.0°  
Field Distribution: 28.8°  
Spacing Criterion: 0.23  
Color Rendering Index (CRI)<sup>1</sup>: 97.9  
Color Temperature (CCT)<sup>2</sup>: 3074K  
Designed for 50,000 Hour Lamp Life<sup>3</sup>

Intensity Distribution		
DISTANCE (FT.)	FOOTCANDLES (FC)	BEAM DIA. (FT.)
6 FT	911.6	1.2
8 FT	512.8	1.5
10 FT	328.2	1.9
12 FT	227.9	2.3
14 FT	167.4	2.7
16 FT	128.2	3.1

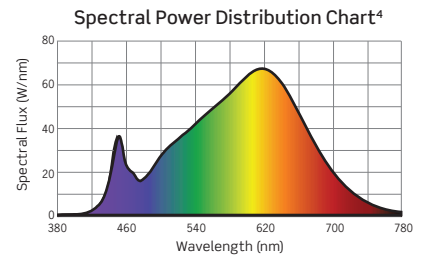
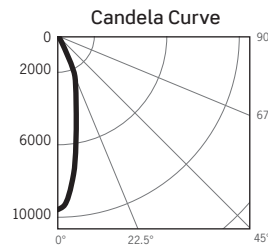


**CTL944ME3XCD: 41W, 3000K, 95 CRI, MEDIUM ALZAK REFLECTOR**

Test No. G22032905

Fixture Delivered Lumens: 2698.1  
Total Watts@120V: 40.9  
Lumens Per Watt: 66.0  
Center Beam Candle Power: 9575  
Beam Distribution: 24.2°  
Field Distribution: 53.7°  
Spacing Criterion: 0.50  
Color Rendering Index (CRI)<sup>1</sup>: 97.9  
Color Temperature (CCT)<sup>2</sup>: 3074K  
Designed for 50,000 Hour Lamp Life<sup>3</sup>

Intensity Distribution		
DISTANCE (FT.)	FOOTCANDLES (FC)	BEAM DIA. (FT.)
6 FT	266.0	2.6
8 FT	149.6	3.4
10 FT	95.7	4.3
12 FT	66.5	5.2
14 FT	48.9	6.0
16 FT	37.4	6.9

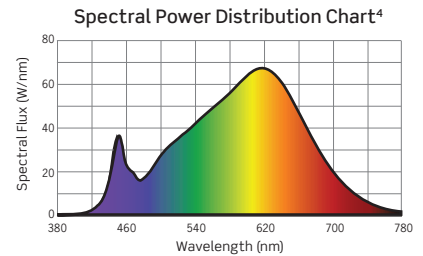
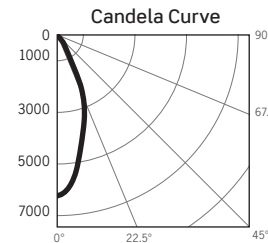


**CTL944FL3XCD: 41W, 3000K, 95 CRI, FLOOD ALZAK REFLECTOR**

Test No. G22033003

Fixture Delivered Lumens: 2824.4  
Total Watts@120V: 40.9  
Lumens Per Watt: 69.1  
Center Beam Candle Power: 6203  
Beam Distribution: 39.3°  
Field Distribution: 64.5°  
Spacing Criterion: 0.65  
Color Rendering Index (CRI)<sup>1</sup>: 97.9  
Color Temperature (CCT)<sup>2</sup>: 3074K  
Designed for 50,000 Hour Lamp Life<sup>3</sup>

Intensity Distribution		
DISTANCE (FT.)	FOOTCANDLES (FC)	BEAM DIA. (FT.)
6 FT	172.3	4.3
8 FT	96.9	5.7
10 FT	62.0	7.1
12 FT	43.1	8.6
14 FT	31.6	10.0
16 FT	24.2	11.4

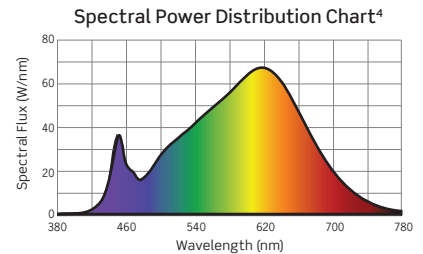
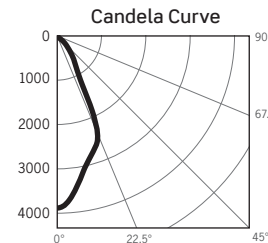


**CTL944WF3XCD: 41W, 3000K, 95 CRI, WIDE FLOOD ALZAK REFLECTOR**

Test No. G22033004

Fixture Delivered Lumens: 614.3  
Total Watts@120V: 13.1  
Lumens Per Watt: 44.5  
Center Beam Candle Power: 31786  
Beam Distribution: 7.0°  
Field Distribution: 11.4°  
Spacing Criterion: 0.12  
Color Rendering Index (CRI)<sup>1</sup>: 97.9  
Color Temperature (CCT)<sup>2</sup>: 3074K  
Designed for 50,000 Hour Lamp Life<sup>3</sup>

Intensity Distribution		
DISTANCE (FT.)	FOOTCANDLES (FC)	BEAM DIA. (FT.)
6 FT	108.0	5.5
8 FT	60.8	7.3
10 FT	38.9	9.2
12 FT	27.0	11.0
14 FT	19.8	12.9
16 FT	15.2	14.7



1. Accuracy of Rendering Colors 2. Color Appearance of Light Source 3. Dependent on Surrounding Temperatures 4. Colors Present within the Light Source

**PHOTOMETRIC MULTIPLICATION FACTORS**

Lumen output values fluctuate based on Color Temperature and Luminaire Wattage/Output Selection. To estimate lumen output of the various CCT/CRI options, multiply 3000K results by the following:

CCT MULTIPLIERS		
CCT	STD. CRI	VIBRANT CRI
2700K	0.92	N/A
3000K	1.00	1.00
3500K	1.05	N/A
4000K	1.10	N/A

OUTPUT MULTIPLIERS			
13W	19W	27W	35W
0.36	0.51	0.70	0.88

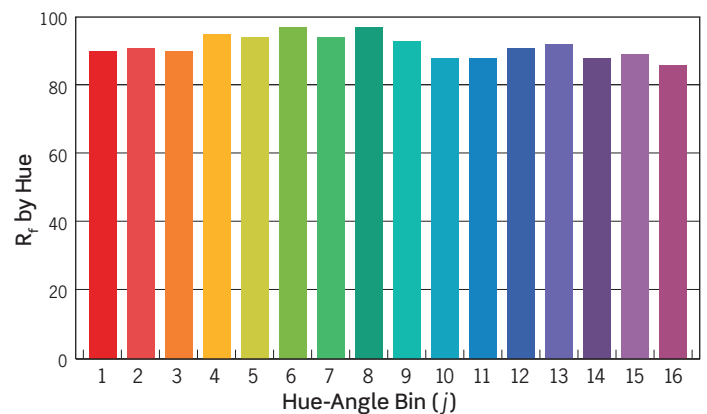
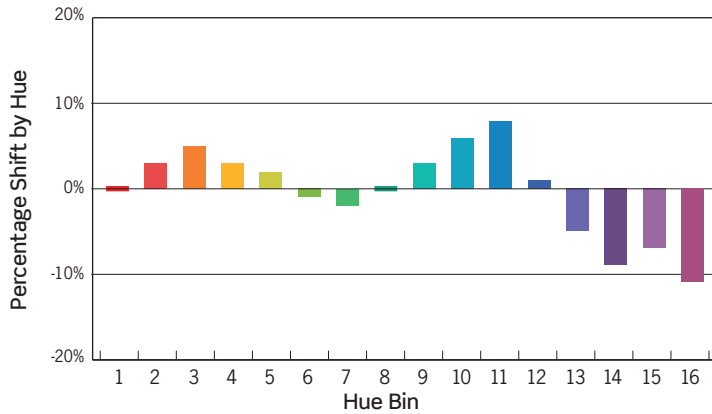
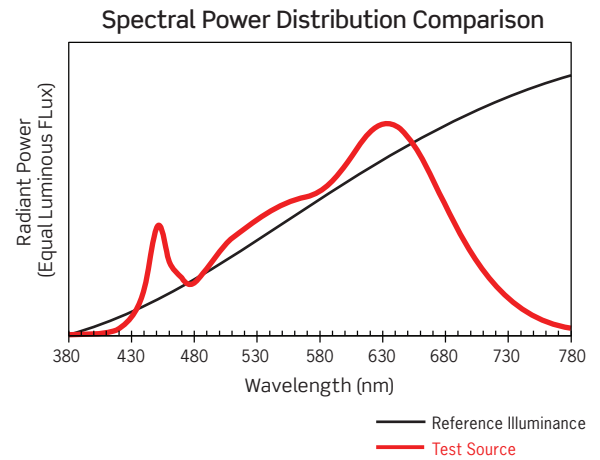
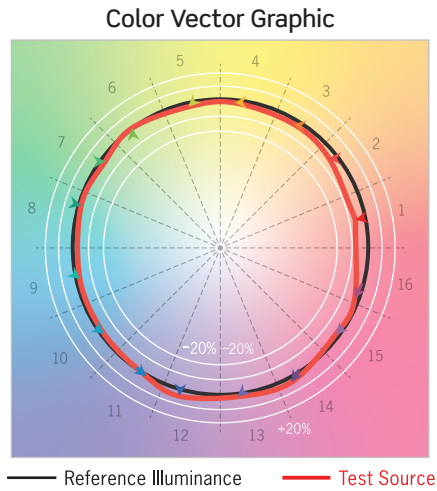
# CTL94 SERIES | Gallery XL Track Luminaire with Xicato® LED: Photometry

## TM-30 DATA: CTL944ME3XCD

ANSI/IES TM-30-18 Color Rendition Report Test No. S22032901

Colors are for visual orientation purposes only

$R_f$	91
$R_g$	98
CCT(K)	3074K
$D_{uv}$	0.0008
$u^l$	0.2477
$v^l$	0.5210



HUE BIN	1	2	3	4	5	6	7	8	9	10	11	12	13	14	15	16
HUE SHIFT	0%	3%	5%	3%	2%	-1%	-2%	0%	3%	6%	8%	1%	-5%	-9%	-7%	-11%
$R_f$ VALUE	90	91	90	95	94	97	94	97	93	88	88	91	92	88	89	86