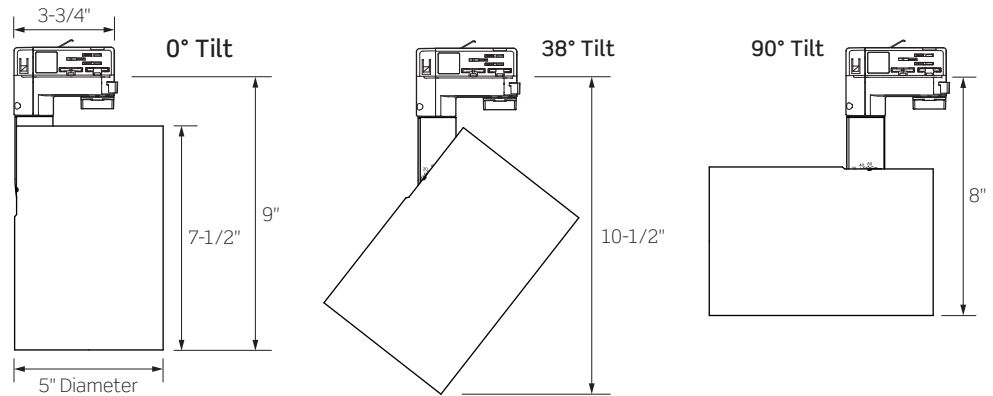


OTL94 SERIES | Gallery XL Track Luminaire with 0-10V Dimming Track System Adapter



High performance track luminaire delivering high outputs and superior beam control

- Clean aesthetics, simple form
- Multiple beam distributions
- High performance
- Consistent color rendering



	OTL940	OTL941	OTL942	OTL943	OTL944	OTL945
WATTAGE	13W	20W	29W	38W	42W	49W
LUMEN OUTPUT ¹ BY BEAM SPREAD Beam Range: 8° to 50°						
Very Narrow Spot Optic	744 Lm	1023 Lm	1349 Lm	1550 Lm	N/A	N/A
Narrow Spot Optic	702 Lm	1033 Lm	1462 Lm	1793 Lm	1949 Lm	N/A
Spot Reflector	1283 Lm	1885 Lm	2646 Lm	3288 Lm	3609 Lm	4010 Lm
Medium Reflector	1365 Lm	2005 Lm	2816 Lm	3660 Lm	3839 Lm	4266 Lm
Flood Reflector	1428 Lm	2098 Lm	2946 Lm	3696 Lm	4017 Lm	4463 Lm
Wide Flood Reflector	1407 Lm	2067 Lm	2902 Lm	3606 Lm	3958 Lm	4398 Lm
COLOR TEMPERATURE	2700K / 3000K / 3500K / 4000K					
CRI	83 (80min) / 90+					
FINISHES	Matte Black / Matte White / Matte Silver					
DRIVER INPUT VOLTAGE	120V or 277V, 50/60Hz					
DIMMING TYPE	0-10V Dimming					
COMPATIBILITY	Compatible with ConTech Lighting 0-10V Dimming Track System					
LISTINGS	cCSAus Certified for use in the U.S. and Canada; Suitable for Dry Locations DLC™ Certified for all models using Spot, Medium, Flood, and Wide Flood Reflectors					
WARRANTY	Five (5) year replacement after date of purchase					
SYSTEM RATING	50,000 Hours @ 70% Lumen Maintenance					

1. Approximate lumen output based on 3000K performance; see photometric test results for additional information

OTL94 SERIES | Gallery XL Track Luminaire with 0-10V Dimming Track System Adapter

ORDERING INFORMATION

Example Order: OTL942VN3K12D2-P

LED Series	Beam: Optic or Reflector	CCT/CRI	Driver ³	Finish	
OTL940 13W OTL941 20W OTL942 29W OTL943 38W OTL944 42W OTL945 49W	PC Optics Intensity at Nadir, Narrow Field VN¹ Very Narrow Spot: 8° Beam, 17° Field NS² Narrow Spot: 11° Beam, 22° Field 1. Very Narrow Spot (VN) only available up to Series 3 (CTL943/38W) 2. Narrow Spot (NS) only available up to Series 4 (CTL944/42W)	Reflectors: Well Defined Beams, Smooth Field SP Spot: 11° Beam, 26° Field ME Medium: 22° Beam, 52° Field FL Flood: 41° Beam, 66° Field WF Wide Flood: 50° Beam, 83° Field	80+ CRI 27K 2700K 3K 3000K 35K 3500K 4K 4000K 90+ CRI 27KC 2700K 3KC 3000K 35KC 3500K 4KC 4000K	12D2 120V 0-10V Dimming 27D2 277V 0-10V Dimming 3. Selected Driver Voltage MUST match Track System Voltage	B Matte Black P Matte White S Matte Silver

ACCESSORY & REPLACEMENT OPTIC ORDERING INFORMATION

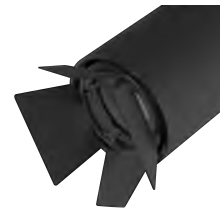
Each Gallery XL Luminaire comes ready to hold up to two (2) Accessories; Snoot or Barn Door count as one (1) piece



FA-94 Series
Snoot with Optional Cross Blades
 Exterior painted per finish selection: Black (B), White (P) or Silver (S). Interior and Cross Blades are always Black.



LA-45 Series
Honeycomb Louver
 3-3/4-Inch Diameter; Black finish



BD-94 Series
Barn Doors
 Black finish

Accessory
FA-94 Snoot with optional Cross Blades

Finish
B Matte Black P Matte White S Matte Silver

Accessory
LA-45 Black Honeycomb Louver

Accessory
BD94 Barn Doors

Finish
B Matte Black



LF20 Series
Tempered Glass Filters and Lenses
 3-3/4-Inch Diameter, 1/8-Inch Thick, typ.



Accessory
LF20 Tempered Glass Filters and Lenses

Finish
C Clear A Amber SL Soft Light B Blue SOL Solite LB Light Blue LS Linear Spread G Green 73 Spread R Red UV Optivex UV RO Rose Y Yellow

Replacement Optic
CTL94

Beam
NS 11° Narrow Spot Optic Very Narrow Spot Optic not available as a replacement optic SP 11° Spot Reflector ME 22° Medium Reflector FL 41° Flood Reflector WF 50° Wide Flood Reflector

OTL94 SERIES | Gallery XL Track Luminaire

with 0-10V Dimming Track System Adapter

PRODUCT SPECIFICATIONS

PERFORMANCE SUMMARY

- Select from 2700K, 3000K, 3500K and 4000K color temperatures; all with a CRI of 80 minimum, 83 typical; high CRI of 90+ available
- Excellent fixture-to-fixture color consistency within a 3-step MacAdam Ellipse tolerance
- Precise beam control ensures that even at lower aiming angles the luminaire is glare free and quiet in the ceiling
- Full collection of accessories available to produce a myriad of filtering and framing effects

CONSTRUCTION

- A revolutionary track head with superior optics designed to bring theatre grade beam control to traditional gallery and commercial track heads and mono-point luminaires
- Constructed with an integrated adapter suitable for use with the ConTech O2CD 0-10V Dimming Track System
- The luminaire is constructed of die-cast aluminum, the cylindrical body providing thermal management
- Adjustable, lockable aiming arm with 0° to 100° tilt for precision aiming; 365° horizontal rotation
- Precision engineered Dual Lens Optic used for 8° Very Narrow Spot and 11° Narrow Spot beam distributions. Design provides a tight beam angle and field to highlight target objects with minimal stray illumination.
- Specular Aluminum Reflectors are used for the 11° Spot, 22° Medium, 41° Flood, and 50° Wide Flood beam distributions. Reflectors are optically engineered for even illumination and glare control.
- Can accept up to two (2) LF20 Lenses/Filters, LA-45 Honeycomb Louver, FA-94 Snoot, or BD94-B Black Barn Doors, ordered separately. Snoot or Barn Door count as one (1) piece.
- Fixture weight: 5 LBS

FIXTURE COMPATIBILITY

- ConTech OTL Track Luminaires are compatible with the ConTech Lighting O2CD 0-10V Dimming Track System

CTL94 SERIES | Gallery XL Track Luminaire Photometrics

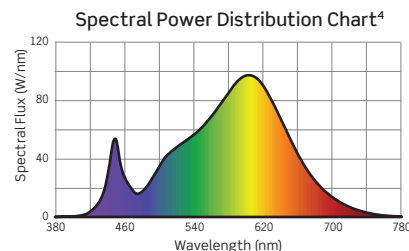
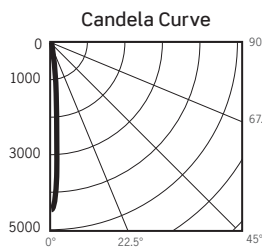
PC OPTIC | VERY NARROW SPOT

CTL943VN3KD

LM-63 Test No. G24062604; LM-79 Test No. S22031501

Fixture Delivered Lumens: 1550.2
 Total Watts@120V: 37.4
 Lumens Per Watt: 41.5
 Center Beam Candle Power: 45100
 Beam Distribution: 8.4°
 Spacing Criterion: 0.17
 Color Rendering Index (CRI)¹: 83.1
 Color Temperature (CCT)²: 3086K
 Designed for 50,000 Hour Lamp Life³

Intensity Distribution		
DISTANCE (FT.)	FOOTCANDLES (FC)	BEAM DIA. (FT.)
6 FT	1252.8	0.9
8 FT	704.7	1.2
10 FT	451.0	1.5
12 FT	313.2	1.8
14 FT	230.1	2.1
16 FT	176.2	2.3



PHOTOMETRIC MULTIPLICATION FACTORS FOR VERY NARROW SPOT ONLY

Lumen output values fluctuate based on Color Temperature, Luminaire Wattage/Output and Trim Selection. To estimate lumen output of these various options, multiply 3000K results by the following:

CCT MULTIPLIERS		
CCT	STD CRI	HIGH CRI
2700K	0.98	0.81
3000K	N/A	0.85
3500K	1.01	0.86
4000K	1.02	0.89

OUTPUT MULTIPLIERS	
Luminaire	Multiplier
13W SERIES 0	0.48
20W SERIES 1	0.66
29W SERIES 2	0.87
38W SERIES 3	1.00

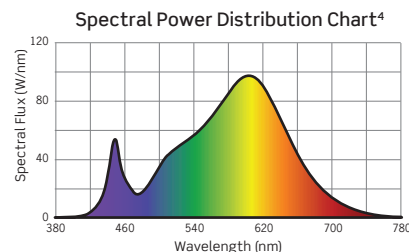
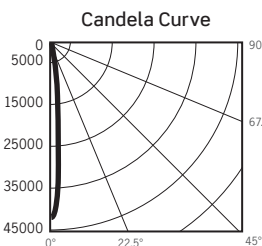
PC OPTIC | NARROW SPOT

CTL944NS3KD

LM-63 Test No. G24062603; LM-79 Test No. S22031501

Fixture Delivered Lumens: 1948.8
 Total Watts@120V: 41.0
 Lumens Per Watt: 47.6
 Center Beam Candle Power: 42188
 Beam Distribution: 10.6°
 Spacing Criterion: 0.20
 Color Rendering Index (CRI)¹: 83.1
 Color Temperature (CCT)²: 3086K
 Designed for 50,000 Hour Lamp Life³

Intensity Distribution		
DISTANCE (FT.)	FOOTCANDLES (FC)	BEAM DIA. (FT.)
6 FT	1171.9	1.1
8 FT	659.2	1.5
10 FT	421.9	1.9
12 FT	293.0	2.2
14 FT	215.2	2.6
16 FT	164.8	3.0



PHOTOMETRIC MULTIPLICATION FACTORS FOR NARROW SPOT ONLY

Lumen output values fluctuate based on Color Temperature, Luminaire Wattage/Output and Optic Selection. To estimate lumen output of these various options, multiply 3000K results by the following:

CCT MULTIPLIERS		
CCT	STD CRI	HIGH CRI
2700K	0.98	0.81
3000K	N/A	0.85
3500K	1.01	0.86
4000K	1.02	0.89

OUTPUT MULTIPLIERS	
Luminaire	Multiplier
13W SERIES 0	0.36
20W SERIES 1	0.53
29W SERIES 2	0.75
38W SERIES 3	0.92

1. Accuracy of Rendering Colors 2. Color Appearance of Light Source 3. Dependent on Surrounding Temperatures 4. Colors Present within the Light Source

CTL94 SERIES | Gallery XL Track Luminaire Photometrics

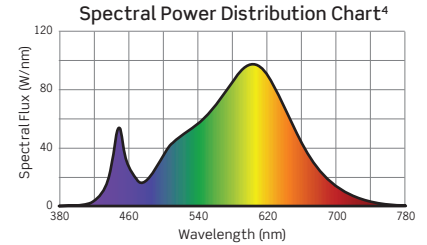
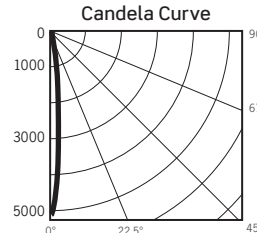
ALUMINUM REFLECTOR | SPOT

CTL945SP3KD

LM-63 Test No. G24062701; LM-79 Test No. S22031501

Fixture Delivered Lumens: 4051.4
Total Watts@120V: 47.4
Lumens Per Watt: 85.5
Center Beam Candle Power: 51787
Beam Distribution: 10.8°
Spacing Criterion: 0.23
Color Rendering Index (CRI)¹: 83.1
Color Temperature (CCT)²: 3086K
Designed for 50,000 Hour Lamp Life³

Intensity Distribution		
DISTANCE (FT.)	FOOTCANDLES (FC)	BEAM DIA. (FT.)
6 FT	1438.5	1.1
8 FT	809.2	1.5
10 FT	517.9	1.9
12 FT	359.9	2.3
14 FT	264.2	2.6
16 FT	202.3	3.0



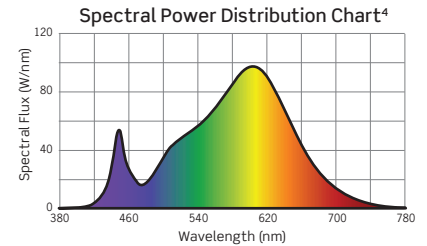
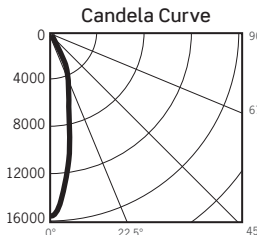
ALUMINUM REFLECTOR | MEDIUM

CTL945ME3KD

LM-63 Test No. G24062702; LM-79 Test No. S22031501

Fixture Delivered Lumens: 4226.1
Total Watts@120V: 47.4
Lumens Per Watt: 90.0
Center Beam Candle Power: 15614
Beam Distribution: 22.3°
Spacing Criterion: 0.49
Color Rendering Index (CRI)¹: 83.1
Color Temperature (CCT)²: 3086K
Designed for 50,000 Hour Lamp Life³

Intensity Distribution		
DISTANCE (FT.)	FOOTCANDLES (FC)	BEAM DIA. (FT.)
6 FT	433.7	2.4
8 FT	244.0	3.2
10 FT	156.1	3.9
12 FT	108.4	4.7
14 FT	79.7	5.5
16 FT	61.0	6.3



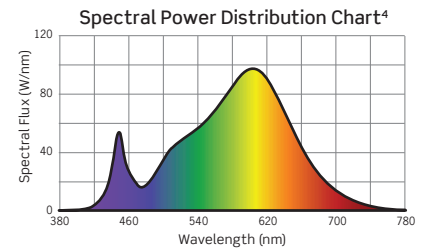
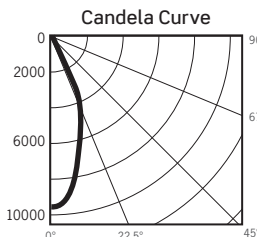
ALUMINUM REFLECTOR | FLOOD

CTL945FL3KD

LM-63 Test No. G24062703; LM-79 Test No. S22031501

Fixture Delivered Lumens: 4462.9
Total Watts@120V: 47.4
Lumens Per Watt: 94.2
Center Beam Candle Power: 9572
Beam Distribution: 41.3°
Spacing Criterion: 0.66
Color Rendering Index (CRI)¹: 83.1
Color Temperature (CCT)²: 3086K
Designed for 50,000 Hour Lamp Life³

Intensity Distribution		
DISTANCE (FT.)	FOOTCANDLES (FC)	BEAM DIA. (FT.)
6 FT	265.9	4.5
8 FT	149.6	6.0
10 FT	95.7	7.5
12 FT	66.5	9.0
14 FT	48.8	10.5
16 FT	37.4	12.1



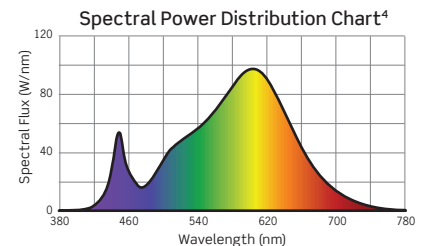
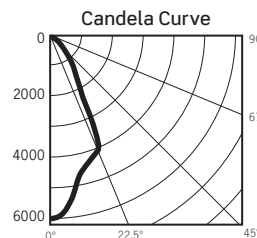
ALUMINUM REFLECTOR | WIDE FLOOD

CTL945WF3KD

LM-63 Test No. G24062801; LM-79 Test No. S22031501

Fixture Delivered Lumens: 4397.6
Total Watts@120V: 47.4
Lumens Per Watt: 92.8
Center Beam Candle Power: 6004
Beam Distribution: 50.4°
Spacing Criterion: 0.75
Color Rendering Index (CRI)¹: 83.1
Color Temperature (CCT)²: 3086K
Designed for 50,000 Hour Lamp Life³

Intensity Distribution		
DISTANCE (FT.)	FOOTCANDLES (FC)	BEAM DIA. (FT.)
6 FT	166.8	5.7
8 FT	93.8	7.5
10 FT	60.0	9.4
12 FT	41.7	11.3
14 FT	30.6	13.2
16 FT	23.5	15.1



1. Accuracy of Rendering Colors 2. Color Appearance of Light Source 3. Dependent on Surrounding Temperatures 4. Colors Present within the Light Source

ALUMINUM REFLECTOR PHOTOMETRIC MULTIPLICATION FACTORS

Lumen output values fluctuate based on Color Temperature, Luminaire Wattage/Output and Optic Selection. To estimate lumen output of these various options, multiply 3000K results by the following:

CCT MULTIPLIERS		
CCT	STD CRI	HIGH CRI
2700K	0.98	0.81
3000K	N/A	0.85
3500K	1.01	0.86
4000K	1.02	0.89

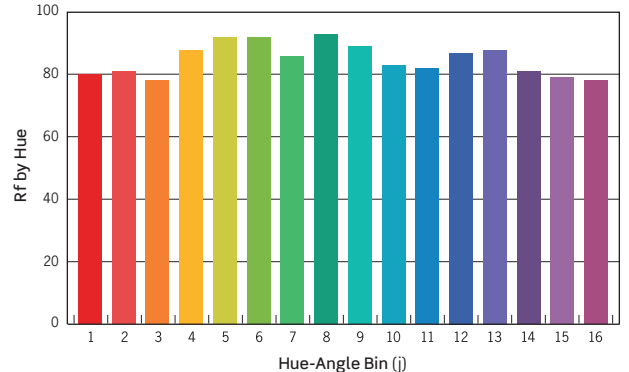
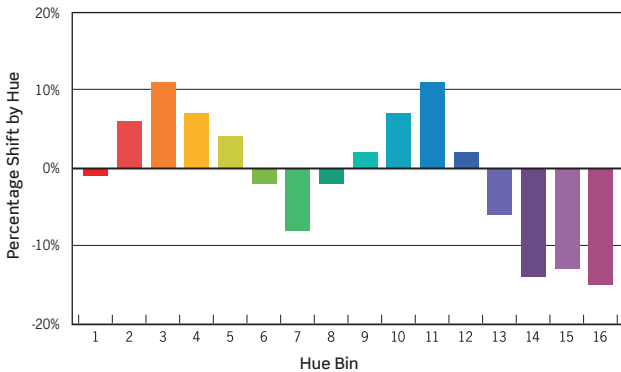
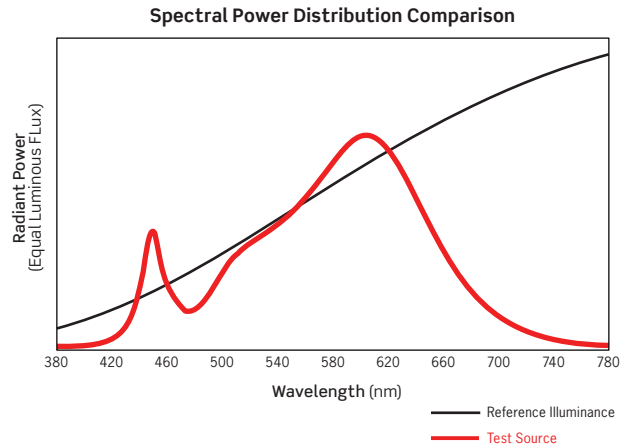
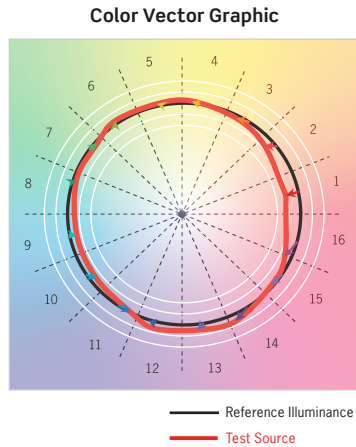
OUTPUT MULTIPLIERS			
Luminaire	Multiplier	Luminaire	Multiplier
13W SERIES 0	0.32	38W SERIES 3	0.82
20W SERIES 1	0.47	42W SERIES 4	0.90
29W SERIES 2	0.66	49W SERIES 5	1.00

CTL94 SERIES | Gallery XL Track Luminaire Photometrics

TM-30 DATA: CTL945ME3KD

ANSI/IES TM-30-18 Color Rendition Report Test No. S22031501

R_f	86
R_g	96
CCT(K)	3086K
D_{uv}	0.0019
u^j	0.2469
v^j	0.5223



HUE BIN	1	2	3	4	5	6	7	8	9	10	11	12	13	14	15	16
HUE SHIFT	-1%	6%	11%	7%	4%	-2%	-7%	-2%	2%	7%	11%	2%	-6%	-14%	-13%	-15%
R _f VALUE	81	82	79	89	93	93	87	94	90	84	83	88	89	82	80	79

Colors are for visual orientation purposes only