

INSTALLATION INSTRUCTIONS | ArchiThin Surface Mount Downlights ASM Series: 120V-277V TRIAC Dimming

Note: Before attempting installation please refer to your local electrical code.

IMPORTANT SAFETY INSTRUCTIONS:

- Read Instructions before installation; save Instructions for later use.
- Product should be installed by a Qualified Electrician.
- All electrical connections must be in accordance with local and National Electrical Code (NEC) standards. If you are unfamiliar with proper electrical wiring connections, obtain the services of a qualified electrician.
- **WARNING: RISK OF SHOCK**
 - Turn off the power at fuse or circuit breaker box before installation or maintenance work.
 - Wear rubber soled shoes and work on a sturdy wooden or non-conductive ladder.
 - Ground the fixture to avoid potential electric shocks and to ensure reliable starting.
 - Double check all connections, making sure they are tight and correct.
- **WARNING: RISK OF FIRE**
 - Most dwellings built before 1985 have supply wire rated at 60°C. Consult a qualified electrician before installation.
 - Use only on 120-277V 50/60Hz circuits.
 - Suitable for Wet Locations under covered ceiling. Not suitable for shower installations.
- **WARNING: RISK OF CUTS**
 - Some metal parts in the fixture may have sharp edges. To prevent cuts and scrapes, wear gloves when handling these parts.
- **CAUTION:** For Wet Locations, in accordance with our cETLus Listing, add Silicone Caulking Compound to the outside surface of the luminaire and mounting surface, where both parts mate, ensuring a continuous bead is applied along the entire seam and perimeter to provide a watertight seal. See FIGURE 1.
- Installing contrary to instructions may cause unsafe conditions.
- If the product has any visible damage do not install it.
- Avoid hazards to children: account for all parts and properly dispose of all packing materials.
- Call the Technical Support department at ConTech Lighting with any installation questions: 847.559.5500.

INSTALLATION

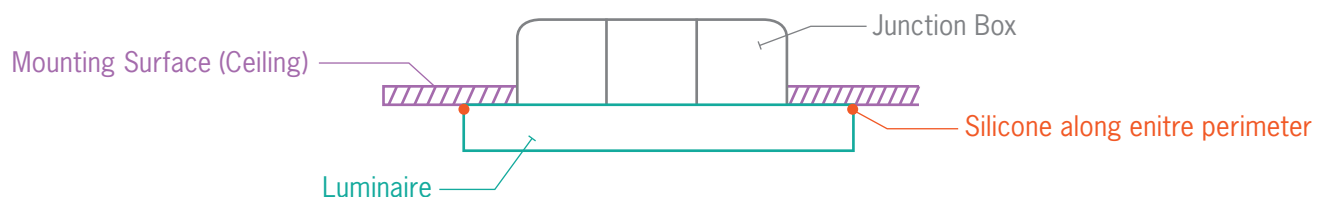
MAINTENANCE AND CARE:

1. Ensure that the power is disconnected prior to cleaning.
2. To keep the finish clean on the product, wipe with soft cloth periodically.
3. Do not use harsh chemical solvents, it may discolor or damage the finish.

PREPARATION FOR INSTALLATION:

1. Read these instructions carefully before attempting to install this product.
2. Disconnect electrical power before installing or servicing any part of this fixture.
3. Install fixture on a clean, flat surface.

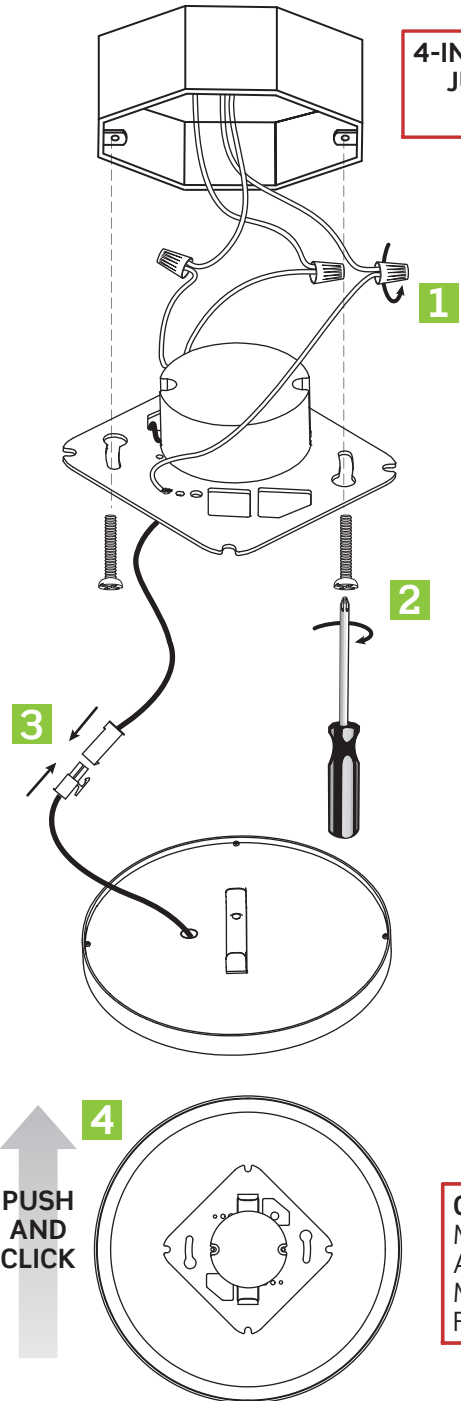
FIGURE 1



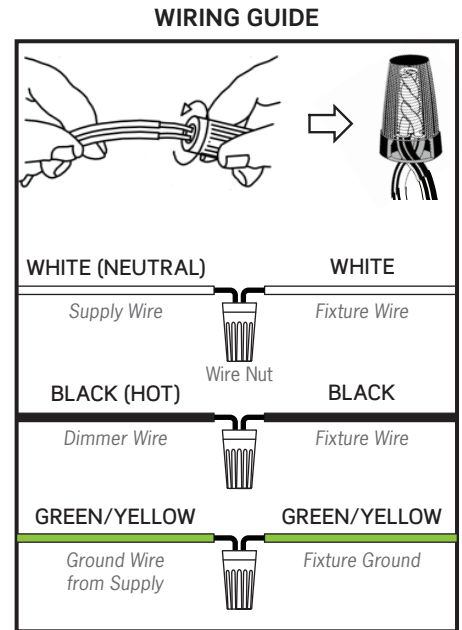
INSTALLATION INSTRUCTIONS | ArchiThin Surface Mount Downlights ASM Series: 120V-277V TRIAC Dimming

Note: Before attempting installation please refer to your local electrical code.

120-277V STANDARD/TRIAC DIMMING INSTALLATION:



4-INCH OCTAGONAL JUNCTION BOX (BY OTHERS)



CAUTION:
MAKE SURE THAT NO WIRES ARE PINCHED BETWEEN J-BOX MOUNTING PLATE AND FIXTURE BODY

WARNING:

Risk of Fire. Use only on 120–277V 50/60Hz Circuits. Suitable for Wet Locations. Before installing, thoroughly review enclosed Installation Manual. If you do not have sufficient electrical wiring experience, please refer to a do-it-yourself wiring handbook or have installed by a qualified licensed electrician. All electrical connections must be in accordance with Local and National Electrical Code (NEC) Standards. Reliable operating temperature is 0° F – 120° F. If flickering occurs in low level dimming, increase light level. Compatible with most Dimmers. Dimmable to 10% with most Dimmers. For more information including Dimmer compatibility, visit www.contechlighting.com, and refer to the ASMR/ASMS Series Specification Sheet,