

INSTALLATION INSTRUCTIONS | Eclipse Curve Surface Mount Luminaires: CTL905 * (CM, FC, MP) Series

Note: Before attempting installation please refer to your local electrical code.

IMPORTANT SAFETY INSTRUCTIONS:

Installation, inspection and maintenance of this luminaire must be carried out by a qualified electrician. Read all the instructions before installation. Save instructions for later use.

When installing or using this luminaire, all basic safety precautions, warnings, restrictions and recommendations must be followed, including the following:

- Turn off power at fuse or circuit breaker box before installation and before performing any maintenance work.
- Product must be grounded to avoid potential electric shock and any other potential hazards.
- Wear rubber soled shoes, proper safety glasses and gloves, and work on a sturdy wooden or non-conductive ladder.
- Product must be mounted in locations and at heights in compliance with the NEC and all local building codes.
- Installing contrary to instructions may cause unsafe conditions.
- For indoor use only, suitable for damp locations.
- Do not exceed the nominal supply voltage or amperage ratings.
- Do not install any luminaire assembly closer than 6 inches from any curtains or combustible materials.
- Do not mount near gas or electric heaters.
- Do not block the light from the trim aperture, in whole or in part, as this may cause unsafe conditions.

- Make sure the supply voltage is the same as the rated luminaire voltage.
- Do not operate in ambient temperatures above those specified for the luminaire.
- Avoid direct eye contact with the light source.
- Always support the weight of the luminaire.
- Use correctly rated supply conductors as indicated by the luminaire labeling.
- Equipment should be mounted in location and at heights where it will not readily be subject to tampering by unauthorized personnel.
- To avoid hazards to children, account for all parts and properly dispose of all packing materials.
- **WARNING:** Risk of fire. Most dwellings built before 1985 have supply wire rated at 60°C. Consult a qualified electrician before installation.
- Call the Technical Support Department at ConTech Lighting with any installation questions: 847.559.5500

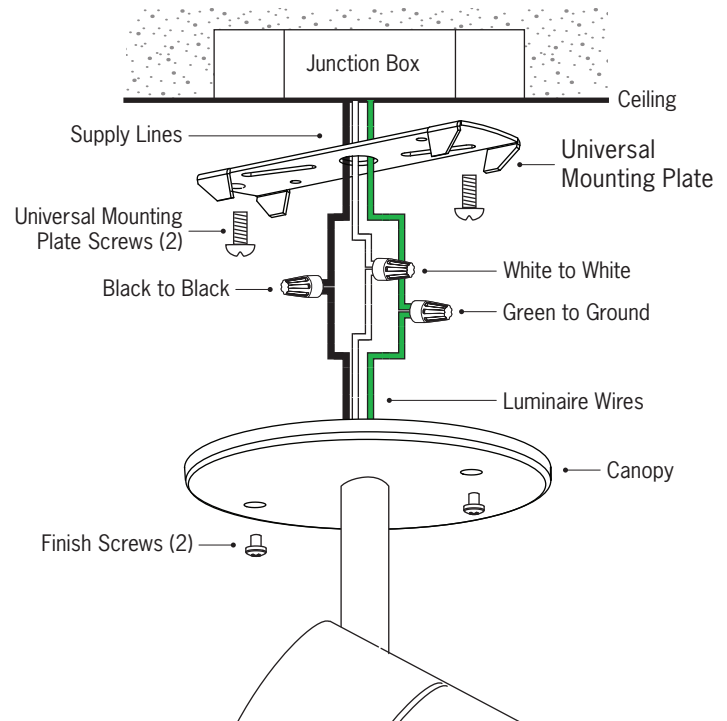
INSTALLATION PROCEDURES:

CEILING MOUNT (CM) AND MONO-POINT (MP), FIGURE 1

NOTE: DO NOT attach the Luminaire directly to the Junction Box without the Universal Mounting Plate. **Under no circumstances should the Luminaire be hung from the Supply Wires.**

1. Turn power off at the main breaker box before starting installation or any maintenance work.
2. Remove the Canopy Cover from the Universal Mounting Plate by removing the two Finish Screws provided.
3. Attach the Universal Mounting Plate to an approved Junction Box with the Mounting Screws provided in the hardware bag.
4. Pull the 120V Supply Wires out of the Junction Box through the opening in the Mounting Plate.
5. Connect the Luminaire Wires to the 120V Supply Wires (Black to Black, White to White, Green to Ground) using the Wire Nuts provided in the hardware bag.
6. Carefully feed all excess wiring and the Wire Nuts through the Universal Mounting Plate opening and into the junction box to avoid pinching.
7. Making sure the screw holes are aligned, reattach the Canopy to the Universal Mounting Plate using the Finish Screws from Step 2. Ensure that they are properly tightened.
8. Turn power back on at the main breaker box and confirm proper operation.

FIGURE 1



CTL905 MONO-POINT SERIES SHOWN

All specifications subject to change without notice. For ConTech's limited product warranty, go to www.contechlighting.com. For a printed copy of the warranty, call 1-847-559-5500.

INSTALLATION INSTRUCTIONS | Eclipse Curve Surface Mount Luminaires: CTL905 * (CM, FC, MP) Series

Note: Before attempting installation please refer to your local electrical code.

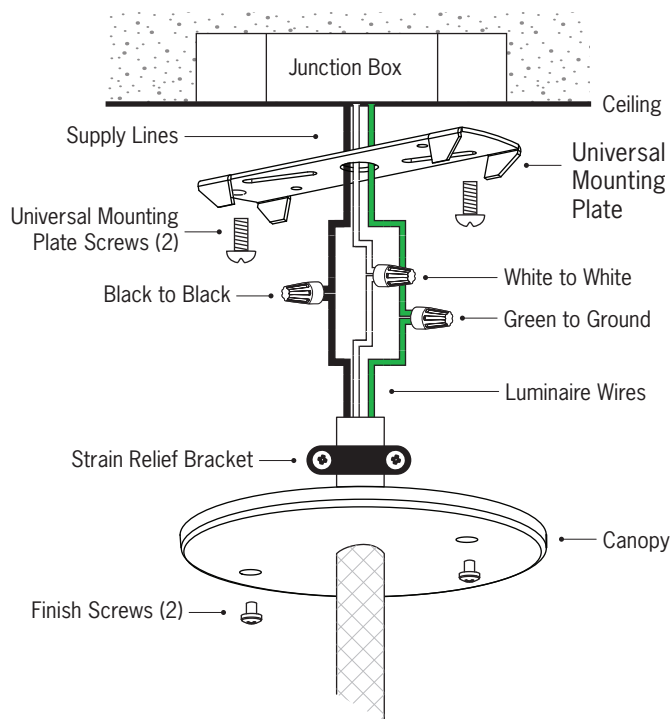
INSTALLATION PROCEDURES, CONTINUED:

FLEXIBLE CABLE (FC) MOUNT, FIGURE 2

NOTE: DO NOT attach the Luminaire directly to the Junction Box without the Universal Mounting Plate. **Under no circumstances should the Luminaire be hung from the Supply Wires.**

1. Turn power off at the main breaker box before starting installation or any maintenance work.
2. Remove the Canopy Cover from the Universal Mounting Plate by removing the two Finish Screws provided.
3. Attach the Universal Mounting Plate to an approved Junction Box with the Mounting Screws provided in the hardware bag.
4. Pull the 120V Supply Wires out of the Junction Box through the opening in the Universal Mounting Plate.
5. Adjust fixture drop length by loosening Cable Strain Relief and pulling excess wire through Canopy. Ensure Cable Strain Relief is properly tightened and secures the desired drop length.
6. Leaving at least 6" of excess Cable for Junction Box Wiring, trim excess Cable and properly strip the individual wire leads to prepare for connections.
7. Connect the Luminaire Wires to the 120V Supply Wires (Black to Black, White to White, Green to Ground) using the Wire Nuts provided in the hardware bag.
8. Carefully feed all excess Wiring and the Wire Nuts through the Universal Mounting Plate opening and into the Junction Box to avoid pinching.
9. Making sure the Screw Holes are aligned, reattach the Canopy to the Universal Mounting Plate using the Finish Screws from Step 2. Ensure that they are properly tightened.
10. Turn power back on at the main breaker box and confirm proper operation.

FIGURE 2



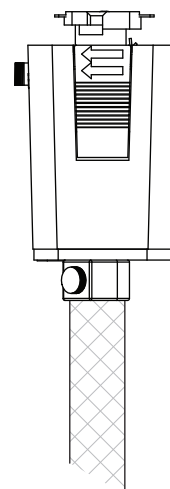
CTL905 FLEXIBLE CABLE SERIES SHOWN

OPTIONAL TRACK ADAPTER, FIGURE 3

NOTE: Adapter sold separately

1. Turn off power; remove canopy from cord set and discard.
2. Cut pendant cord to desired length and strip end of wires to prepare for connection.
3. Thread pendant cord through bottom cover of track adapter; set screw hub of the bottom cover should be facing out toward the pendant.
4. Make the wire connections: White wire to Neutral and the Black wire to Line Voltage. Connect the Green/Yellow wire to Ground.
5. Push wire nuts and wires into the track adapter housing. Place bottom cover of track adapter into place making sure the polarity indicator arrow on the cover points in the same direction as the polarity indicator arrows on the track adapter latch. Use two (2) included screws to attach the cover to the track adapter.
6. Using a flat head screwdriver tighten strain relief set screw on track adapter bottom cover securely against pendant cord.

FIGURE 3



All specifications subject to change without notice. For ConTech's limited product warranty, go to www.contechlighting.com. For a printed copy of the warranty, call 1-847-559-5500.

CONTECH LIGHTING | 725 LANDWEHR ROAD | NORTHBROOK, ILLINOIS 60062 | PHONE 847.559.5500 | www.contechlighting.com

©2022 Conservation Technology of Illinois, LLC. All rights reserved. Note: Specifications subject to change without notice.

CTL905 SM INST REV0322