

INSTALLATION INSTRUCTIONS | Eclipse Curve Track Mounted Luminaires: CTL905 Series

Note: Before attempting installation please refer to your local electrical code.

IMPORTANT SAFETY INSTRUCTIONS:

Installation should be carried out by a qualified electrician.

Read all the instructions before installation. Save instructions for later use.

When installing or using this luminaire, basic safety precautions should always be followed, including the following:

- Turn off power at fuse or circuit breaker box before installation, any maintenance work, adding to or changing the configuration of the track.
- Product must be grounded to avoid potential electric shock and any other potential hazards.
- Wear rubber soled shoes and work on a sturdy wooden or non-conductive ladder.
- Product must be mounted in locations and at heights in compliance with the NEC and local building codes.
- Installing contrary to instructions may cause unsafe conditions.
- For indoor use only.
- Do not exceed the nominal supply voltage or amperage ratings.
- Do not install any luminaire assembly closer than 6 inches from any curtain, or similar combustible material.
- Do not block the light from the trim aperture, in whole or in part, as this may cause unsafe conditions.
- Do not mount near gas or electric heaters.
- Do not attempt to energize anything other than lighting track luminaires on the track. To reduce the risk of fire and electric shock, do not attempt to connect power tools, extension cords, appliances, and the like to the track.
- Do not connect track to more than one branch circuit.
- Equipment should be mounted in location and at heights where it will not readily be subject to tampering by unauthorized personnel.
- To avoid hazards to children, account for all parts and properly dispose of all packing materials.
- **WARNING:** Risk of fire. Most dwellings built before 1985 have supply wire rated at 60°C. Consult a qualified electrician before installation.
- **NOTICE:**
CTL Prefixed fixtures are for use with ConTech LT Single Circuit, LT2 Two-Circuit, Master JN or Juno R, T, TU Series Track Systems only.
HTL Prefixed fixtures are for use with Cooper L64, L65 or LZR Series Track Systems only.
LTL Prefixed fixtures are for use with Lightolier LYTESPAN 6000/1/2 Series Track Systems only.
LIR Prefixed fixtures are for use with ConTech Odyssey LIR Series Flexible Track Systems only.
NCTL Prefixed fixtures are for use with Nordic Aluminum Inc., Cooper Lighting (Division of Cooper Industries) L Series, or Nordic Aluminum Inc. GET Series Track Systems only.
- Call the Technical Support Department at ConTech Lighting with any installation questions: 847.559.5500

INSTALLATION PROCEDURES: TRACK MOUNTING FOR SINGLE-CIRCUIT TRACK

1. All track sections have an easy-to-see embossed polarity line (Figure 1).
 2. The fixtures have indicator arrows designed to point to the track polarity line (Figure 2).
 3. To install:
 - A. Insert the fixture contacts into the track channel.
 - B. Retract the track latch by gently pulling down.
 - C. Rotate the adapter 90° so that the polarity arrow points to the polarity line on the track (Figure 3).
 4. When the fixture is installed, the track latch will lock the fixture into the track.
- NOTE:** All latches should face the same direction after installation. Once the fixture is installed into the track, move the ON/OFF switch to the "ON" position.

FIGURE 1

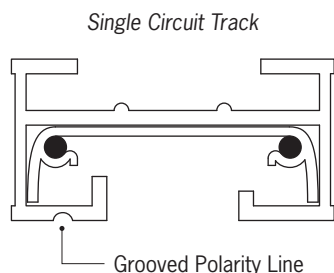


FIGURE 2

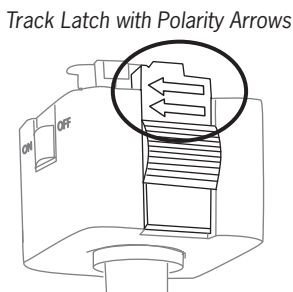
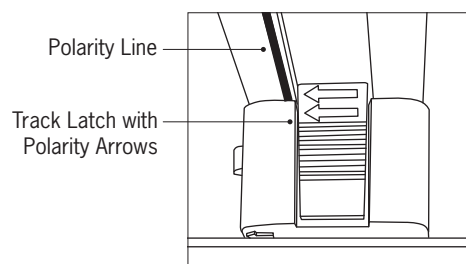


FIGURE 3



All specifications subject to change without notice. For ConTech's limited product warranty, go to www.contechlighting.com. For a printed copy of the warranty, call 1-847-559-5500.

INSTALLATION INSTRUCTIONS | Eclipse Curve Track Mounted Luminaires: CTL905 Series

Note: Before attempting installation please refer to your local electrical code.

INSTALLATION PROCEDURES: TRACK MOUNTING

FOR TWO-CIRCUIT TRACK

The fixtures have two contacts in the connector that engage conductors within the track; one for neutral and the other for the positive (live) conductor. Two-circuit track contains one neutral and two positive conductors. To engage the second live conductor (Figure 4):

1. Identify the "POSITIVE" connections on the lighting fixture base, marked "P".
2. To access the second circuit, pull up the connector marked "P" to the position shown.
3. Slide the plastic shim (shipped with track) beneath the connector, locking the tabs in place.

4. All Two-circuit track sections have an easy-to-see embossed polarity line (Figure 5).
5. The fixtures have indicator arrows designed to point to the track polarity line (Figure 6).
6. To install:
 1. Insert the fixture contacts into the track channel.
 2. Retract the track latch by gently pulling down.
 3. Rotate the adapter 90° so that the polarity arrow points to the polarity line on the track (Figure 7).
7. When the fixture is installed, the track latch will lock the fixture into the track.

NOTE: All latches should face the same direction after installation. Once the fixture is installed into the track, move the ON/OFF switch to the "ON" position.

FIGURE 4

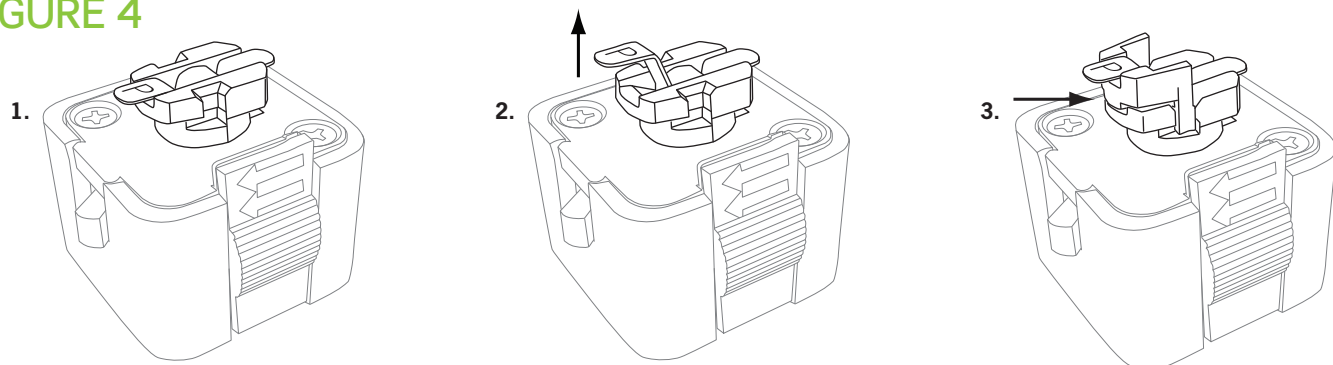


FIGURE 5

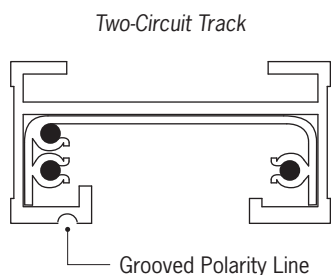


FIGURE 6

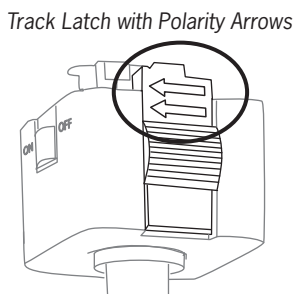
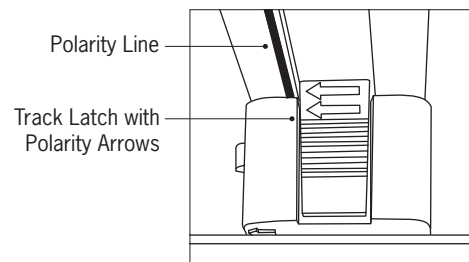


FIGURE 7



All specifications subject to change without notice. For ConTech's limited product warranty, go to www.contechlighting.com. For a printed copy of the warranty, call 1-847-559-5500.