

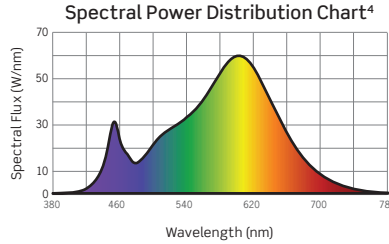
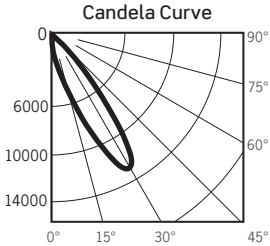
# PLUS Series | P3RA 3-Inch Adjustable Downlight Photometrics

## PHOTOMETRICS

### P3RA-25L30KNMVD / P3RTA-CLR: 3-Inch Adjustable Downlight, Narrow Beam, Clear Reflector

LM-63 Test No. G23120605; LM-79 Test No. S23120401

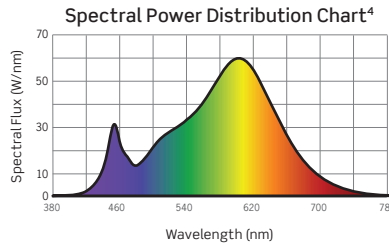
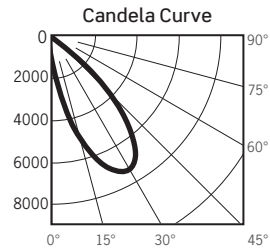
**Luminaire aimed 30° from Nadir**  
 Fixture Delivered Lumens: 2044.5  
 Total Watts@120V: 26.9  
 Lumens Per Watt: 76.0  
 Center Beam Candle Power: 12852  
 Beam Distribution: 18.6°  
 Color Rendering Index (CRI)<sup>1</sup>: 82.6  
 Color Temperature (CCT)<sup>2</sup>: 3099K  
 Designed for 50,000 Hour Lamp Life<sup>3</sup>



### P3RA-25L30KMMVD / P3RTA-CLR: 3-Inch Adjustable Downlight, Medium Beam, Clear Reflector

LM-63 Test No. G23120601; LM-79 Test No. S23120401

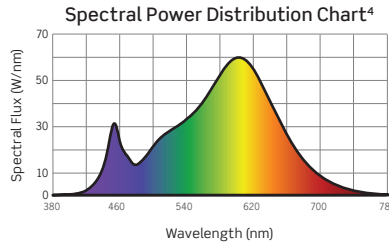
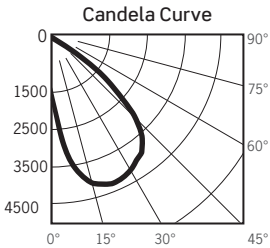
**Luminaire aimed 30° from Nadir**  
 Fixture Delivered Lumens: 2410.9  
 Total Watts@120V: 26.8  
 Lumens Per Watt: 90.0  
 Center Beam Candle Power: 7323  
 Beam Distribution: 34°  
 Color Rendering Index (CRI)<sup>1</sup>: 82.6  
 Color Temperature (CCT)<sup>2</sup>: 3099K  
 Designed for 50,000 Hour Lamp Life<sup>3</sup>



### P3RA-25L30KFMVD / P3RTA-CLR: 3-Inch Adjustable Downlight, Flood Beam, Clear Reflector

LM-63 Test No. G24011901; LM-79 Test No. S23120401

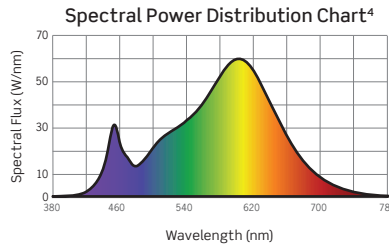
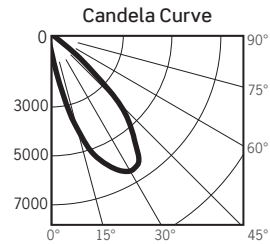
**Luminaire aimed 30° from Nadir**  
 Fixture Delivered Lumens: 2309.9  
 Total Watts@120V: 26.8  
 Lumens Per Watt: 86.2  
 Center Beam Candle Power: 4173  
 Beam Distribution: 46°  
 Color Rendering Index (CRI)<sup>1</sup>: 82.6  
 Color Temperature (CCT)<sup>2</sup>: 3099K  
 Designed for 50,000 Hour Lamp Life<sup>3</sup>



### P3RA-25L30KMMVD / P3RTB-WHT: 3-Inch Adjustable Downlight, Medium Beam, White Bevel Trim

LM-63 Test No. G23120606; LM-79 Test No. S23120401

**Luminaire aimed 30° from Nadir**  
 Fixture Delivered Lumens: 2097.4  
 Total Watts@120V: 26.9  
 Lumens Per Watt: 78.0  
 Center Beam Candle Power: 6507  
 Beam Distribution: 34°  
 Color Rendering Index (CRI)<sup>1</sup>: 82.6  
 Color Temperature (CCT)<sup>2</sup>: 3099K  
 Designed for 50,000 Hour Lamp Life<sup>3</sup>



1. Accuracy of Rendering Colors 2. Color Appearance of Light Source 3. Dependent on Surrounding Temperatures 4. Colors Present within the Light Source

## PHOTOMETRIC MULTIPLIERS

Lumen output values fluctuate based on Color Temperature (CCT), Color Rendering Index (CRI) and Wattage. To estimate lumen output of other combinations, multiply the published results by the following factors:

| CCT MULTIPLIERS |         |         |
|-----------------|---------|---------|
| CCT             | 80+ CRI | 90+ CRI |
| 2700K           | 0.95    | 0.84    |
| 3000K           | 1.00    | 0.87    |
| 3500K           | 1.02    | 0.90    |
| 4000K           | 1.04    | 0.92    |

| OUTPUT MULTIPLIERS |            |            |            |
|--------------------|------------|------------|------------|
| 10L SERIES         | 15L SERIES | 20L SERIES | 25L SERIES |
| 0.41               | 0.56       | 0.76       | 1.00       |

| TRIM FINISH MULTIPLIERS  |                 |             |
|--------------------------|-----------------|-------------|
| FINISH                   | P3RTR REFLECTOR | P3RTB BEVEL |
| CLEAR (SPECULAR)         | 1.00            | N/A         |
| PLATINUM (SEMI-SPECULAR) | 1.01            | N/A         |
| MATTE WHITE              | 1.00            | 1.00        |
| MATTE BLACK              | 0.96            | 0.96        |

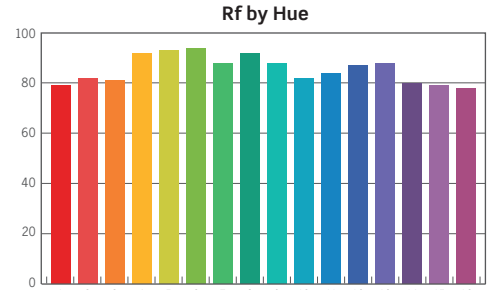
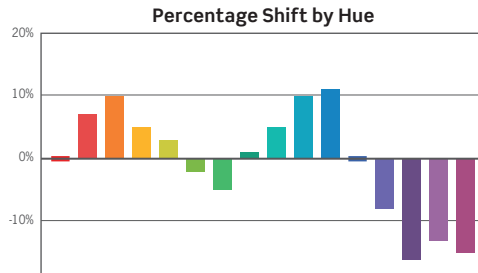
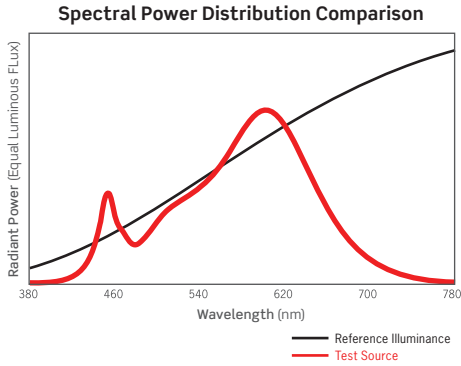
# PLUS Series | P3RD 3-Inch Downlight Photometrics

## PHOTOMETRICS: TM-30 DATA

Colors are for visual orientation purposes only

### Clear Reflector, 80+ CRI

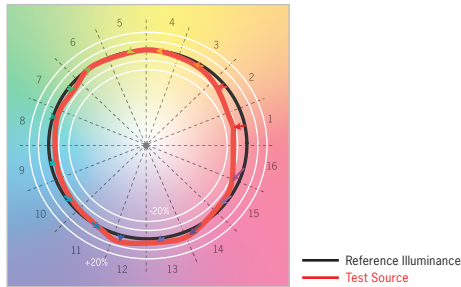
ANSI/IES TM-30-18 Color Rendition Report Test No. S23120401



| HUE BIN              | 1  | 2  | 3   | 4  | 5  | 6   | 7   | 8  | 9  | 10  | 11  | 12 | 13  | 14   | 15   | 16   |
|----------------------|----|----|-----|----|----|-----|-----|----|----|-----|-----|----|-----|------|------|------|
| HUE SHIFT            | 0% | 7% | 10% | 5% | 3% | -2% | -5% | 1% | 5% | 10% | 11% | 0% | -8% | -16% | -13% | -15% |
| R <sub>f</sub> VALUE | 79 | 82 | 81  | 92 | 93 | 94  | 88  | 92 | 88 | 82  | 84  | 87 | 88  | 80   | 79   | 78   |

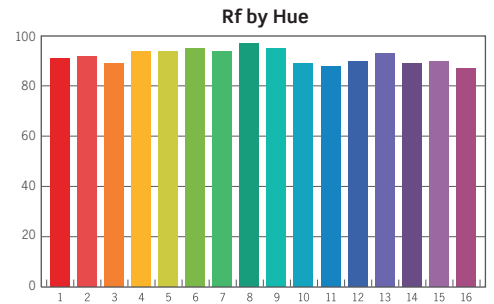
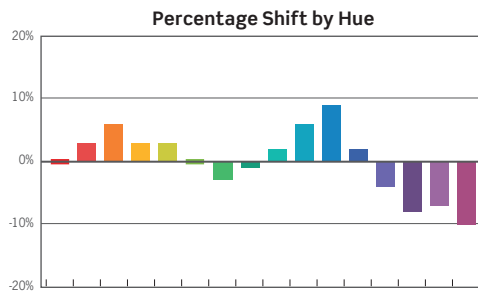
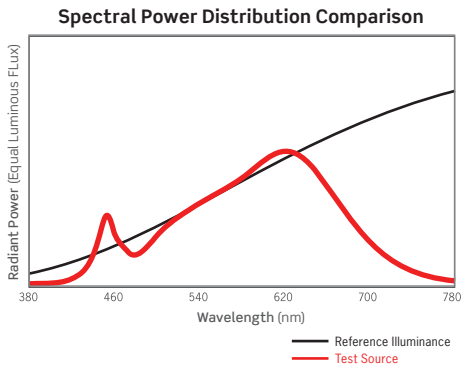
|                 |        |
|-----------------|--------|
| R <sub>f</sub>  | 85     |
| R <sub>g</sub>  | 94     |
| CCT(K)          | 3099K  |
| D <sub>uv</sub> | 0.0007 |
| u <sup>t</sup>  | 0.2470 |
| v <sup>t</sup>  | 0.5203 |

Color Vector Graphic



### Clear Reflector, 90+ CRI

ANSI/IES TM-30-18 Color Rendition Report Test No. S23120402



| HUE BIN              | 1  | 2  | 3  | 4  | 5  | 6  | 7   | 8   | 9  | 10 | 11 | 12 | 13  | 14  | 15  | 16   |
|----------------------|----|----|----|----|----|----|-----|-----|----|----|----|----|-----|-----|-----|------|
| HUE SHIFT            | 0% | 3% | 6% | 3% | 3% | 0% | -3% | -1% | 2% | 6% | 9% | 2% | -4% | -8% | -7% | -10% |
| R <sub>f</sub> VALUE | 91 | 92 | 89 | 94 | 94 | 95 | 94  | 97  | 95 | 89 | 88 | 90 | 93  | 89  | 90  | 87   |

|                 |         |
|-----------------|---------|
| R <sub>f</sub>  | 92      |
| R <sub>g</sub>  | 100     |
| CCT(K)          | 3024K   |
| D <sub>uv</sub> | -0.0004 |
| u <sup>t</sup>  | 0.2499  |
| v <sup>t</sup>  | 0.5203  |

Color Vector Graphic

