

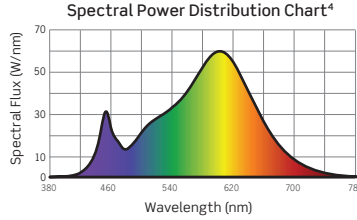
PLUS Series | P3RW 3-Inch Wall Wash Downlight Photometrics

PHOTOMETRICS

P3RW-25L30KWWMD / P3RTW-CLR: 3-Inch Wall Wash Downlight, Clear Wall Wash Reflector

LM-63 Test No. G23121501; LM-79 Test No. S23120401

Fixture Delivered Lumens: 1808.3
 Total Watts@120V: 26.7
 Lumens Per Watt: 67.7
 Color Rendering Index (CRI): 82.6
 Color Temperature (CCT): 3099K
 Designed for 50,000 Hour Lamp Life³



1. Accuracy of Rendering Colors
2. Color Appearance of Light Source
3. Dependent on Surrounding Temperatures
4. Colors Present within the Light Source

PHOTOMETRICS: FOOTCANDLES ON WALL

MOUNTED 2 FT. FROM WALL P3RW-25L30KWWMD / P3RTW-CLR: 3-Inch Wall Wash Downlight, Clear Wall Wash Reflector

Mounting Height = 10 Ft.
 Room Reflectance = 80/50/20
 Multiple Units = 5 UNITS
 Beam Center: ↓
 Center of Multiple Units: █

Distance from Ceiling		Single Unit						Multiple Units								
		0 FT	1 FT	2 FT	3 FT	4 FT	5 FT	2 FT ON CENTER			3 FT ON CENTER			4 FT ON CENTER		
		↓						↓	↓	↓	↓	↓	↓	↓	↓	↓
1 FT	10	6	3	1	1	0.3	16	12	15	13	9	11	11	6	11	
2 FT	39	16	11	4	2	1	66	60	63	50	38	47	44	24	43	
3 FT	66	47	21	8	3	2	116	111	111	84	72	82	74	45	73	
4 FT	61	48	26	11	5	2	122	119	118	86	80	85	73	55	72	
5 FT	45	35	23	11	6	3	101	99	97	71	68	70	58	49	57	
6 FT	30	25	18	10	6	3	77	76	73	55	54	54	43	40	42	
7 FT	19	18	13	9	5	3	56	56	53	40	40	39	31	30	31	
8 FT	13	12	10	7	5	3	41	41	38	30	30	29	24	24	23	
9 FT	9	8	7	5	4	2	30	29	28	21	22	21	18	18	17	

MOUNTED 3 FT. FROM WALL P3RW-25L30KWWMD / P3RTW-CLR: 3-Inch Wall Wash Downlight, Clear Wall Wash Reflector

Mounting Height = 10 Ft.
 Room Reflectance = 80/50/20
 Multiple Units = 5 UNITS
 Beam Center: ↓
 Center of Multiple Units: █

Distance from Ceiling		Single Unit						Multiple Units								
		0 FT	1 FT	2 FT	3 FT	4 FT	5 FT	2 FT ON CENTER			3 FT ON CENTER			4 FT ON CENTER		
		↓						↓	↓	↓	↓	↓	↓	↓	↓	↓
1 FT	4	3	1	1	0.4	0.4	8	7	7	6	5	5	5	4	5	
2 FT	15	11	7	3	2	1	32	30	30	23	21	22	19	15	18	
3 FT	29	22	13	6	3	2	62	60	59	44	41	43	36	30	36	
4 FT	38	30	19	10	5	3	86	83	83	61	58	59	49	42	48	
5 FT	36	30	21	12	6	3	90	88	87	63	62	62	50	47	50	
6 FT	29	26	20	12	7	4	81	80	77	58	56	55	45	44	44	
7 FT	22	20	15	10	7	4	67	66	63	49	49	47	38	37	37	
8 FT	17	15	12	9	6	4	55	54	51	41	40	38	31	31	30	
9 FT	12	11	9	7	5	3	42	42	41	31	32	30	24	24	23	

MOUNTED 4 FT. FROM WALL P3RW-25L30KWWMD / P3RTW-CLR: 3-Inch Wall Wash Downlight, Clear Wall Wash Reflector

Mounting Height = 10 Ft.
 Room Reflectance = 80/50/20
 Multiple Units = 5 UNITS
 Beam Center: ↓
 Center of Multiple Units: █

Distance from Ceiling		Single Unit						Multiple Units								
		0 FT	1 FT	2 FT	3 FT	4 FT	5 FT	2 FT ON CENTER			3 FT ON CENTER			4 FT ON CENTER		
		↓						↓	↓	↓	↓	↓	↓	↓	↓	↓
1 FT	2	1	1	1	0.4	0.4	5	4	4	4	3	3	3	3	3	
2 FT	7	6	4	2	2	1	18	17	17	14	12	12	11	10	10	
3 FT	14	11	8	5	3	2	35	34	33	26	24	24	21	19	20	
4 FT	21	17	12	8	4	3	54	53	51	39	38	38	31	28	30	
5 FT	24	21	16	10	6	3	67	66	64	48	47	47	38	36	37	
6 FT	23	21	17	11	7	4	71	69	66	51	50	50	40	39	39	
7 FT	21	19	15	11	7	4	66	65	62	49	48	47	38	37	37	
8 FT	17	15	13	9	7	5	58	57	55	43	43	41	34	34	33	
9 FT	13	12	11	8	6	4	48	48	46	37	37	35	29	29	28	

PHOTOMETRIC MULTIPLIERS

Lumen output values fluctuate based on Color Temperature (CCT), Color Rendering Index (CRI) and Wattage. To estimate lumen output of other combinations, multiply the published results by the following factors:

CCT MULTIPLIERS		
CCT	80+ CRI	90+ CRI
2700K	0.95	0.84
3000K	1.00	0.87
3500K	1.02	0.90
4000K	1.04	0.92

OUTPUT MULTIPLIERS			
10L SERIES	15L SERIES	20L SERIES	25L SERIES
0.41	0.56	0.76	1.00

TRIM FINISH MULTIPLIERS	
FINISH	MULTIPLIER
CLEAR (SPECULAR)	N/A
PLATINUM (SEMI-SPECULAR)	1.09
MATTE WHITE	0.98
MATTE BLACK	0.91

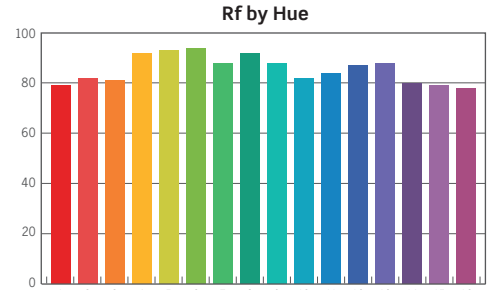
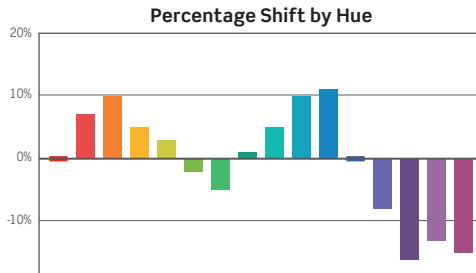
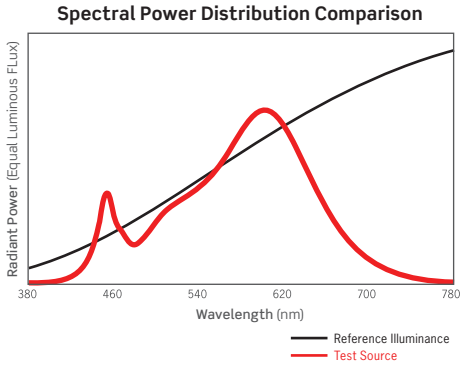
PLUS Series | P3RD 3-Inch Downlight Photometrics

PHOTOMETRICS: TM-30 DATA

Colors are for visual orientation purposes only

Clear Reflector, 80+ CRI

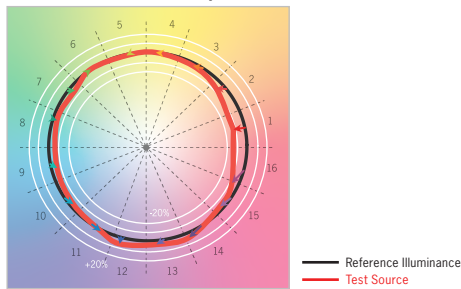
ANSI/IES TM-30-18 Color Rendition Report Test No. S23120401



HUE BIN	1	2	3	4	5	6	7	8	9	10	11	12	13	14	15	16
HUE SHIFT	0%	7%	10%	5%	3%	-2%	-5%	1%	5%	10%	11%	0%	-8%	-16%	-13%	-15%
R _f VALUE	79	82	81	92	93	94	88	92	88	82	84	87	88	80	79	78

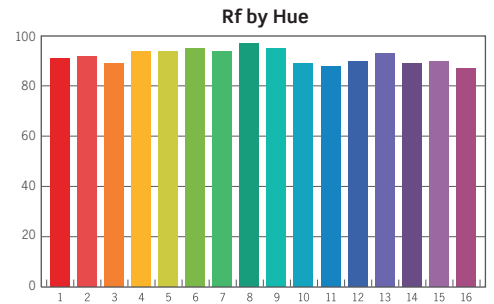
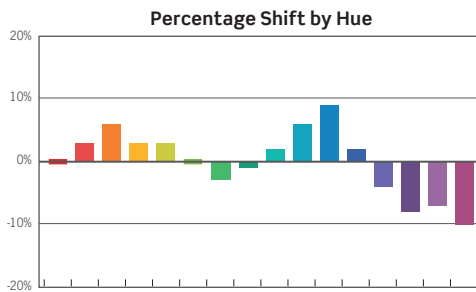
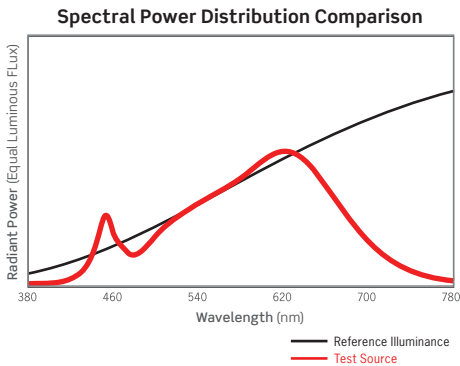
Color Vector Graphic

R _f	85
R _g	94
CCT(K)	3099K
D _{uv}	0.0007
u ^t	0.2470
v ^t	0.5203



Clear Reflector, 90+ CRI

ANSI/IES TM-30-18 Color Rendition Report Test No. S23120402



HUE BIN	1	2	3	4	5	6	7	8	9	10	11	12	13	14	15	16
HUE SHIFT	0%	3%	6%	3%	3%	0%	-3%	-1%	2%	6%	9%	2%	-4%	-8%	-7%	-10%
R _f VALUE	91	92	89	94	94	95	94	97	95	89	88	90	93	89	90	87

Color Vector Graphic

R _f	92
R _g	100
CCT(K)	3024K
D _{uv}	-0.0004
u ^t	0.2499
v ^t	0.5203

