

DATE

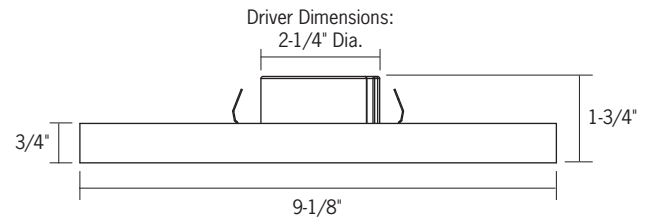
PROJECT

TYPE

ASMR9 SERIES | 9-Inch ArchiThin Surface Mount Downlights



DISCONTINUED ITEM:
LIMITED INVENTORY
Consult Factory for Availability



	ASMR9
SIZE	9-Inch
SHAPE	Round
WATTAGE	20W
LUMEN OUTPUT ¹	1725Lm
COLOR TEMPERATURE	3000K
CRI	90
SYSTEM RATING	50,000 Hours @ 70% Lumen Maintenance
DRIVER INPUT WATTAGE	20W
DRIVER INPUT VOLTAGE	120-277 VAC, 50/60Hz
DIMMING TYPE	Triac/ELV Dimming 0-10V Dimming
LISTING	cETLus Listed Suitable for Wet Locations (Covered Ceiling) ENERGY STAR® Certified Can be used to comply with the 2019 Title 24 Part 6 JA8 High Efficacy LED Light Source Requirements Suitable for use in closets when installed in accordance with NFPA® 70, NEC® Section 410.16
WARRANTY	Five (5) year replacement after date of purchase

1. Lumen values are approximate, see photometric test results

ORDERING INFORMATION

Example Order: -

Fixture	Color Temp	Driver/Dimming	Finish
ASMR9 - 9-Inch Round	90+ CRI 30KC - 3000K	MVD1 - 120-277V Triac/ELV Dimming MVD2 - 120-277V 0-10V Dimming	W - White

DATE

PROJECT

TYPE

ASMR9 SERIES | 9-Inch ArchiThin Surface Mount Downlights

PRODUCT DETAILS

Construction

- 9-Inch Round cast aluminum frame, acrylic (PMMA) lens, White Finish
- Mounts to NEC approved 4-inch Round or Octagon Junction Box with minimum depth of 2-1/8-inch
- Easy installation with Driver pre-assembled on Mounting Plate
- Standard color temperature: 3000K, 90 CRI
- 120-277V Integrated Drivers with Triac/ELV or 0-10V Dimming

Performance Summary

- Slim architectural design with optical diffusion lens providing even illumination
- Edge-lit LED configuration for low glare light pattern
- 20W, 1725 Delivered Lumens

DIMMING SPECIFICATIONS

MVD1 Driver Option dims with Forward Phase (TRIAC) or Reverse Phase (ELV) Dimmers; 120V only.

MVD2 Driver Option dims using 0-10V Dimmers.

RECOMMENDED DIMMERS FOR DIMMING DOWN TO 4%:

Leviton 6631	Leviton IPL06-10Z	Leviton DSL06-1LZ
Leviton 6674	Leviton IPE04-1LZ	Leviton IP710-LFZ
Lutron DVCL-153P	Lutron SCL-153P	Lutron DV-600P
Lutron DV-603P	Lutron DSL06	Lutron RRD-10ND

DATE

PROJECT

TYPE

ASMR9 SERIES | 9-Inch ArchiThin Surface Mount Downlights

PHOTOMETRICS

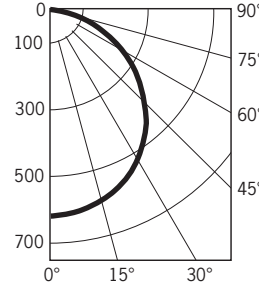
ASMR930KCMD1: 9-Inch Round, 3000K 90CRI, 120-277V Phase Dimming

Fixture Delivered Lumens: 1725.1
 Total Watts@120V: 19.3
 Lumens Per Watt: 89.4
 Center Beam Candle Power: 621
 Beam Distribution: 110°
 Spacing Criterion: 1.36
 Color Rendering Index (CRI)¹: 93.1
 Color Temperature (CCT)²: 2913K
 Designed for 50,000 Hour Lamp Life³
 LM-63 Test No. G21110501
 LM-79 Test No. S21110801

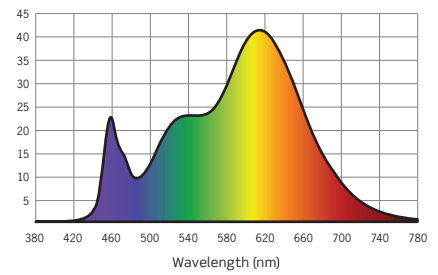
Intensity Distribution

DISTANCE (FT.)	FOOTCANDLES (FC)	BEAM DIAMETER (FT.)
6 FT	17.2	17.1
8 FT	9.7	22.8
10 FT	6.2	28.6
12 FT	4.3	34.3
14 FT	3.2	40.0
16 FT	2.4	45.7

Candela Curve



Spectral Power Distribution Chart⁴



1. Accuracy of Rendering Colors 2. Color Appearance of Light Source 3. Dependent on Surrounding Temperatures 4. Colors Present within the Light Source

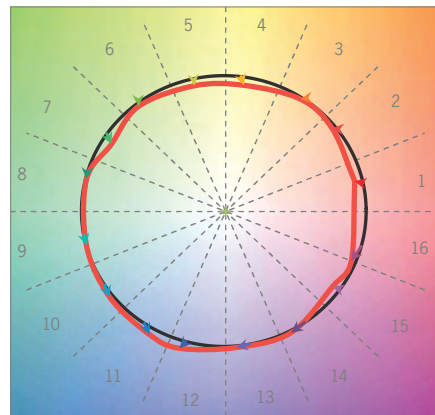
TM-30 DATA

ANSI/IES TM-30-18 Color Rendition Report Test No. S21110801

Colors are for visual orientation purposes only

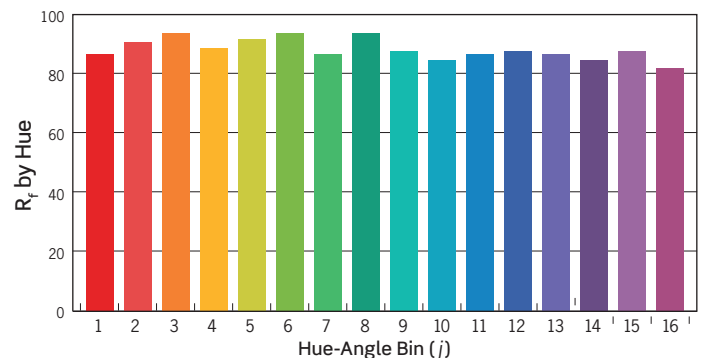
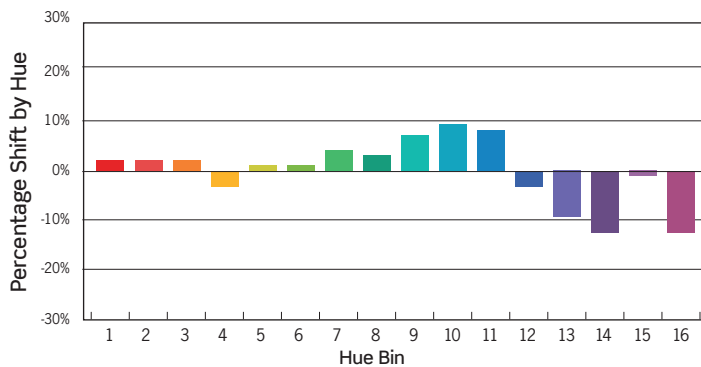
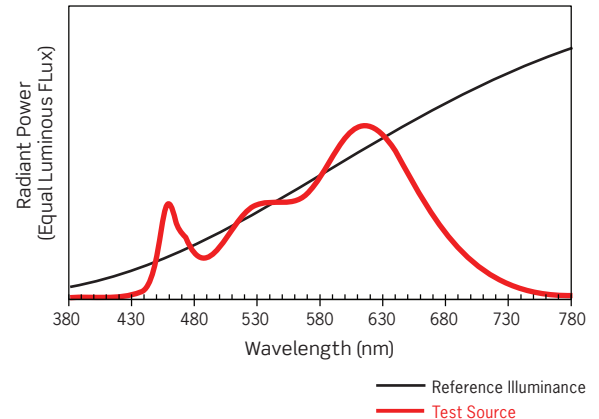
R _f	89
R _g	96
CCT(K)	2913K
D _{uv}	-0.0006
u' ^l	0.2540
v' ^l	0.5223

Color Vector Graphic



— Reference Illuminance — Test Source

Spectral Power Distribution Comparison



HUE BIN	1	2	3	4	5	6	7	8	9	10	11	12	13	14	15	16
HUE SHIFT	3%	2%	2%	-3%	1%	1%	5%	4%	8%	10%	8%	-3%	-10%	-12%	-1%	-12%
R _f VALUE	88	92	95	90	93	95	87	94	88	85	88	89	88	85	88	82