

DATE

PROJECT

TYPE

CRS8 | Quick Release LED Pendant

	CRS8
WATTAGE	7.4W
LUMEN OUTPUT ¹	685Lm
COLOR TEMPERATURE	3000K
CRI	90 min., 93+Typical
INPUT WATTAGE	7.4W
INPUT VOLTAGE	
TRIAC Dimming Driver	120VAC , 50/60Hz
0-10V Dimming Driver	120VAC / 277VAC, 50/60Hz
LENGTHS	2 Ft, 4 Ft, 6 Ft and 8 Ft (-0 In./+1% Length Tolerance); Length is field adjustable
SHADE TYPE	Gravity Fit For compatible Shades, see attached Gravity Fit Decorative Shade options
MOUNTING OPTIONS	Line Voltage Track Adapter (TRIAC Dimming only), Odyssey Line Voltage Flexible Track Adapter (TRIAC Dimming only), Decorative Ceiling Canopy, Thin Ceiling Canopy, Standard Ceiling Canopy or Three Pendant Canopy
FINISHES	Antique Bronze ² or Black with Black Cable, White or Silver with Transparent Cable
LISTINGS	cCSAus Certified to UL Standards Suitable for Dry Locations
WARRANTY	Five (5) year replacement after date of purchase
SYSTEM RATING	50,000 Hours @ 70% Lumen Maintenance



ORDERING INFORMATION

Example Order: -

Pendant:

- CRS824** - 2 Feet (24 Inches) Pendant
- CRS848** - 4 Feet (48 Inches) Pendant
- CRS872** - 6 Feet (72 Inches) Pendant
- CRS896** - 8 Feet (96 Inches) Pendant

Color Temp/CRI:

- 30KC** - 3000K
90 Min., 93+ Typical CRI

Finish:

- AB²** - Antique Bronze/Black Cable
- B** - Black/Black Cable
- P** - White/Transparent Cable
- S** - Silver/Transparent Cable

1. Approximate lumen output based on 3000K performance; see photometric test results for additional information
2. Limited stock available in Antique Bronze finish; contact factory for details

MOUNTING OPTIONS ON PAGE 2

DATE

PROJECT

TYPE

CRS8 | Quick Release LED Pendant

MOUNTING OPTIONS



CRS8-TQRCD Series

Thin Ceiling Canopy
1/4 In. Height, 4-3/8 In. Diameter

Mounts to NEC approved 4 inch Round or Octagon Junction Box with minimum depth of 1-1/2 inches. LED Dimming Driver included.



CRS8-LVTQRD1 Series

Line Voltage Track Adapter
2 Inch Height, 7 Inch Length

Use to connect Pendant to standard Line Voltage Track. TRIAC LED Dimming Driver included.

Mounting:
CRS8-TQRCD1 - Triac Dimming Driver
CRS8-TQRCD2 - 0-10V Dimming Driver

Finish:
AB³ - Antique Bronze
B - Black
P - White
S - Silver

Mounting:
CRS8-LVTQRD1 - Triac Dimming Driver

Finish:
B - Black
P - White
S - Silver



CRS8-QRCD Series

Ceiling Canopy
1-5/16 In. Height, 4-3/8 In. Dia.

LED Dimming Driver included.



CRS8-ODYQRD1 Series

Ceiling Canopy
3-1/2 Inch Height, 6 Inch Length

Use to connect Pendant to Odyssey Line Voltage Flexible Track. TRIAC LED Dimming Driver included.

Mounting:
CRS8-QRCD1 - Triac Dimming Driver
CRS8-QRCD2 - 0-10V Dimming Driver

Finish:
AB³ - Antique Bronze
B - Black
P - White
S - Silver

Mounting:
CRS8-ODYQRD1 - Triac Dimming Driver

Finish:
AB³ - Antique Bronze
S - Silver



CRS8-DQRCD Series

Decorative Ceiling Canopy
2-1/2 In. Height, 4-3/8 In. Dia.

Mounts to NEC approved 4 inch Round or Octagon Junction Box with minimum depth of 1-1/2 inches. LED Dimming Driver included.



CRS8-3QRCD Series

Decorative Ceiling Canopy
2 In. Height, 12 In. Dia.

Mounts to NEC approved 4 inch Round or Octagon Junction Box with minimum depth of 1-1/2 inches. LED Dimming Driver included.

Mounting:
CRS8-DQRCD1 - Triac Dimming Driver
CRS8-DQRCD2 - 0-10V Dimming Driver

Finish:
AB³ - Antique Bronze
B - Black
P - White
S - Silver

Mounting:
CRS8-3QRCD1 - Triac Dimming Driver
CRS8-3QRCD2 - 0-10V Dimming Driver

Finish:
AB³ - Antique Bronze
B - Black
P - White
S - Silver

3. Limited stock available in Antique Bronze finish; contact factory for details

DATE

PROJECT

TYPE

CRS8 | Quick Release LED Pendant

PRODUCT DETAILS

Construction

- Omni-directional light output for even illumination of the Gravity Fit shade, as well as a strong downward punch of light that provides functional task illumination
- Pendant includes six (6) LED Arrays; twenty-six (26) total LEDs
- Delivers 685 Lumens while only consuming 7.4W, achieving an efficacy of over 93 Lumens/Watt
- Optional Frosted Diffusion Lens included
- Must be used with one of the mounting options listed on page 2; choose from Line Voltage Track, Line Voltage Flexible Track or various Canopy Mounting options

Performance Summary

- 3000K, CRI 90min., 93+ typical
- Excellent fixture to fixture color consistency within a 4-step MacAdam Ellipse tolerance
- Compatible with Gravity-Fit Decorative Shades, sold separately

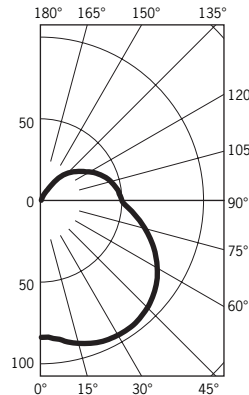
PHOTOMETRICS: CRS8*30KC

Fixture Delivered Lumens: 685
 Total Watts@120V: 7.4
 Lumens Per Watt: 93.1
 Center Beam Candle Power: 83.7
 Beam Distribution: 190.5°
 Spacing Criterion: 1.69
 Color Rendering Index (CRI)¹: 93
 Color Temperature (CCT)²: 3079K
 Designed for 50,000 Hour Lamp Life³
 LM-63 Test No. 81643
 LM-79 Test No. 81645

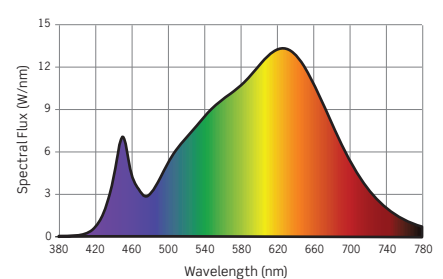
Intensity Distribution

DISTANCE (FT.)	FOOTCANDLES (FC)	BEAM DIAMETER (FT.)
6 FT	2.3	10.0
8 FT	1.3	13.4
10 FT	0.8	16.7
12 FT	0.6	20.1
14 FT	0.4	23.4
16 FT	0.3	26.8

Candela Curve



Spectral Power Distribution Chart⁴



1. Accuracy of Rendering Colors 2. Color Appearance of Light Source 3. Dependent on Surrounding Temperatures 4. Colors Present within the Light Source

DIMMING

Compatible with most Electronic Low Voltage and TRIAC (Incandescent) Dimmer

Electronic Low Voltage (ELV)

- Leviton Acenti
- Lutron Faedra
- Lutron NovaT

TRIAC (Incandescent)

- Leviton Illumitech
- Leviton SureSlide
- Leviton Trimatron
- Leviton True Touch
- Cooper Aspire
- Lutron Skylark
- Lutron Maestro

DATE

PROJECT

TYPE

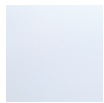
| Gravity Fit Shades

CTG4 SERIES | Double Cylinder

Elegantly patterned glass outer cylinder wrapped around a white frosted glass inner diffuser; mounting ring included

Inner Diffuser:

7-1/8-inches H x 4-1/2-inch Dia.



CTG434 - Frosted White

Outer Shade:

8-1/2-inches H x 5-1/2-inch Dia.



516 - Gray Crackle



515 - Clear Crackle



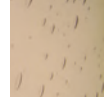
517 - Champagne Crackle



525 - Clear Seeded



526 - Gray Seeded



527 - Champagne Seeded



CTG61 SERIES | ELEMENTS Metallic Glass Cylinder with Optional Diffuser

Contemporary cylinder shape with translucent metallic glass; mounting ring included

Outer Shade:

10-5/8-inches H x 4-3/4-inch Dia.



CTG61C - Copper



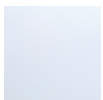
CTG61G - Gold



CTG61S - Silver/Chrome

Inner Diffuser:

8-3/4-inches H x 3-1/2-inch Dia.



OFG101 - Frosted White
For use with CRS8 Pendant



DATE

PROJECT

TYPE

| Gravity Fit Shades

CTG1 SERIES | Designer Series: Jar

Glass patterns include satin finish plain glass, vintage inspired seeded glass and crackle glass

Shade:

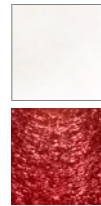
6-inches H x 5-3/4-inch Diameter, 3-1/2-inch bottom opening
1-1/8-inch Diameter mounting hole in top of shade



CTG111 - Champagne Crackle
CTG121 - Champagne Seeded
CTG131 - Champagne Plain



CTG112 - Gray Crackle
CTG122 - Gray Seeded
CTG132 - Gray Plain



CTG134 - Frosted White Plain
CTG11R - Red Crackle



CTG SERIES | Designer Series: Globes

Glass patterns include satin finish plain glass, vintage inspired seeded glass and crackle glass

Shades:

Small Globe: 5-1/4-inches H x 5-1/2-inch Diameter, 2-inch bottom opening
Large Globe: 8-1/4-inches H x 9-inch Diameter, 4-1/8-inch bottom opening
1-1/8-inch Diameter mounting hole in top of shade



CTG211 - Champagne Crackle Small Globe
CTG311 - Champagne Crackle Large Globe
CTG221 - Champagne Seeded Small Globe
CTG321 - Champagne Seeded Large Globe
CTG231 - Champagne Plain Small Globe
CTG331 - Champagne Plain Large Globe



CTG212 - Gray Crackle Small Globe
CTG312 - Gray Crackle Large Globe
CTG222 - Gray Seeded Small Globe
CTG322 - Gray Seeded Large Globe
CTG232 - Gray Plain Small Globe
CTG332 - Gray Plain Large Globe



CTG234 - Frosted White Plain Small Globe
CTG334 - Frosted White Plain Large Globe



DATE

PROJECT

TYPE

| Gravity Fit Shades

CTGATL3 SERIES | ATLAS Cylinder

Slotted Mounting Ring included to facilitate installation. When Clear or Amber shade is used with the CRS8 LED Pendant, add the White Frost Inner Cylinder to illuminate the Outer Shade evenly.

Outer Shade:

10-5/8-inches H x 4-3/4-inch Dia.



CTGATL3A - Amber



CTGATL3C - Clear



CTGATL3W - Frosted White

Inner Diffuser:

8-3/4-inches H x 3-1/2-inch Dia.



OFG101 - Frosted White
For use with CRS8 Pendant



CTGATLG3 SERIES | ATLAS GRANDE Cylinder

Slotted Mounting Ring included to facilitate installation. Frosted White finish is recommended for use with the CRS8 LED Pendant.

Outer Shade:

16-inches H x 4-3/4-inch Dia.



CTGATL3GA - Amber



CTGATLG3C - Clear



CTGATLG3W - Frosted White



DATE

PROJECT

TYPE

| Gravity Fit Shades

CTG4CY SERIES | CYLINDRUS Glass Shade

Designed for the CRS5 LED Mini Pendant using the Lock-Fit Mounting Ring and the CRS8 LED Pendant using the Gravity-Fit Ring; both Mounting Rings are included with the Shade

Shade:

11-3/4-inches H x 2-3/4-inch Dia.



CTG4CY3W - Frosted White



MLA106 SERIES | Ellipse Case Glass Shade

Shade:

11-1/2-inches H x 4-1/2-inch Dia., 3-1/2-inch bottom opening



MLA106-AP - Amber



MLA106-R - Red



MLA106-B - Blue



MLA106-W - White



MLA110 SERIES | Ribbed Cylinder Glass Shade

Shade:

8-inches H x 4-1/4-inch Dia.



MLA110-AP - Amber



MLA110-R - Red



MLA110-B - Blue



MLA110-W - White



DATE

PROJECT

TYPE

| Gravity Fit Shades

OFG10 SERIES | Cylinder Case Glass Decorative Shade

Includes chrome plated ring mount

Shade:

8-3/4-inches H x 3-1/2-inch Dia.



OFG101 - White Frost



OFG103 - Mango Sunset



OFG108 - Red



OFG102 - Blueberry



OFG107 - Amber



OFG20 SERIES | Bell Case Satin Glass Decorative Shade

Shade:

7-1/4-inches H x 5-7/8-inch Dia.



OFG201 - White Frost



OFG203 - Mango Sunset



OFG208 - Red



OFG202 - Blueberry



OFG207 - Amber

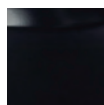


MLA142 SERIES | Flat Metal Cone Shade

White Interior

Shade:

2-1/2-inches H x 9-inch Dia.



MLA142-B - Black



MLA142-S - Silver

