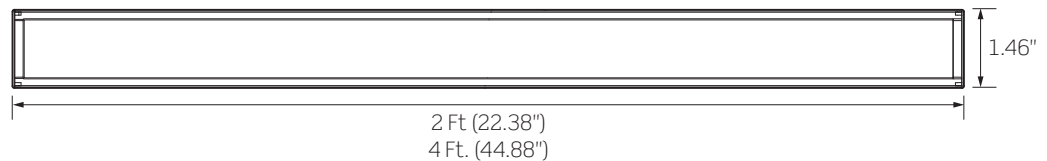
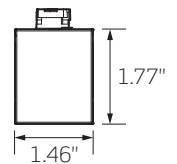


DATE

PROJECT

TYPE

## CTL21 SERIES | Eclipse Linear Track Luminaires



	CTL212	CTL214
LINEAR LENGTH	2 Foot (22.38 Inches)	4 Foot (44.88 Inches)
WATTAGE <sup>1</sup>	18.9W	37.2W
LUMEN OUTPUT <sup>1</sup>	1426 Lumens	3046 Lumens
COLOR TEMPERATURE	3000K, 3500K, 4000K <sup>2</sup>	
CRI	90 CRI	
LENS/DISTRIBUTION TYPE	Diffuser/Lambertian Flood	
DRIVER INPUT WATTAGE <sup>3</sup>	21W	40W
DIMMING TYPE	Incandescent (Forward Phase) and ELV (Reverse Phase)	
COMPATABILITY	CTL Units are compatible with ConTech Lighting LT/LT2 Single Circuit/Two Circuit and Luxbeam Track Systems, as well as Juno <sup>®3</sup> Lighting Trac-Master™ Systems HTL Units are compatible with Halo <sup>4</sup> Power-Trac and Lazer Track Systems	
LISTING	cCSAus Certified on Base Models; Suitable for Dry Locations 3000K and 3500K Models are ENERGY STAR™ Certified	
WARRANTY	Five (5) year replacement after date of purchase	
SYSTEM RATING	50,000 Hours @ 70% Lumen Maintenance	

### PRODUCT DETAILS

#### Construction

- Black or White Extruded Aluminum Housing with Molded End Caps
- Polycarbonate Diffuser to minimize glare and pixelization of LED Board
- Polarity marked adapter and positive locking clips ensure proper track installation

#### Performance Summary

- LED Board consists of LEDs in 3000K, 3500K or 4000K<sup>2</sup> at 90CRI
- Diffuser Lens provides 101° Flood Distribution for full linear coverage
- Dimming is standard (120V only), allowing smooth illumination down to 5% using Forward Phase or Reverse Phase dimmers

1. Wattage and Lumen Output based on 3000K photometric reports (page 3)  
 2. Consult Factory for Price, Minimum Order quantity and Lead Time for 4000K option  
 3. Wattage as reported on cCSAus Certification File

DATE

PROJECT

TYPE

# CTL21 SERIES | Eclipse Linear Track Luminaires

## ORDERING INFORMATION

Example Order:  -

Track System	Luminaire Series	Color Temp/CRI	Beam	Dimming	Finish
CTL - ConTech HTL <sup>1</sup> - Halo	212 - 2 Ft. 18.9W/1426Lm	30C - 3000K/90CRI 35C - 3500K/90CRI	F - Flood	D - 120V TRIAC/ ELV Dimming	B - Black P - White
	214 - 4 Ft. 37.2W/3046Lm	40C <sup>2</sup> - 4000K/90CRI			

### Accessories

- CTL212LOUV-(B,P) - 22 Inch Louver
- CTL212VIS-(B,P) - 22 Inch Side Visor

Individual Louvers and Side Visors fit CTL212 (2 Ft Luminaire).  
For CTL214 (4 Ft Luminaire), order two (2) of each accessory to fit full length of Luminaire.

### Beam Shaping Lenses:

- For CTL212:
- CTL212NLENS - Narrow
  - CTL212WLENS - Wide
  - CTL212ASYMLENS - Asymmetric
  - CTL212BWLENS - Bat-Wing
- For CTL214:
- CTL214NLENS - Narrow
  - CTL214WLENS - Wide
  - CTL214ASYMLENS - Asymmetric
  - CTL214BWLENS - Bat-Wing

1. Halo is a registered trademark of Cooper Lighting  
2. Consult Factory for Price, Minimum Order quantity and Lead Time for 4000K option

DATE

PROJECT

TYPE

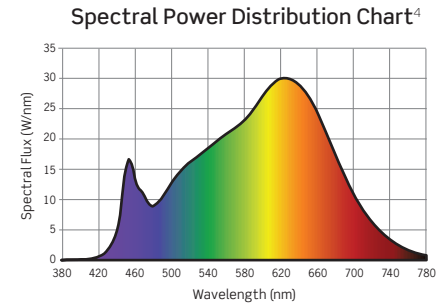
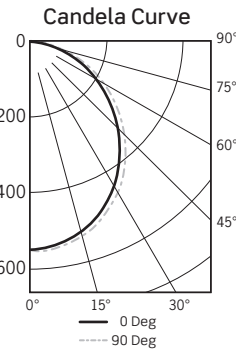
# CTL21 SERIES | Eclipse Linear Track Luminaires

## PHOTOMETRICS

### CTL21230CFD: 20W 2 Ft. Linear Track, Flood Beam, Dimming Driver, White Finish

Fixture Delivered Lumens: 1401.94  
 Total Watts@120V: 18.97  
 Lumens Per Watt: 73.79  
 Center Beam Candle Power: 549  
 Beam Distribution: 110°  
 Spacing Criterion: 1.2  
 Color Rendering Index (CRI)<sup>1</sup>: 96.0  
 Color Temperature (CCT)<sup>2</sup>: 3104K  
 Designed for 50,000 Hour Lamp Life<sup>3</sup>  
 Test No. G22072501

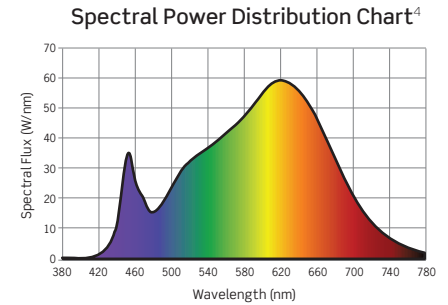
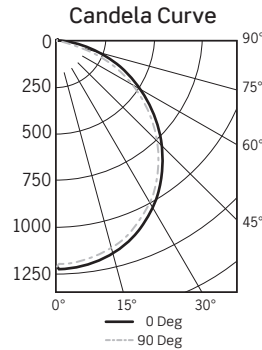
DISTANCE (FT.)	FOOTCANDLES (FC)	BEAM DIAMETER (FT.)
6 FT	15.2	15.2
8 FT	8.6	20.3
10 FT	5.5	25.4
12 FT	3.8	30.5
14 FT	2.8	35.6
16 FT	2.1	40.6



### CTL21430CFD: 40W 4 Ft. Linear Track, Flood Beam, Dimming Driver, White Finish

Fixture Delivered Lumens: 3046  
 Total Watts@120V: 36.6  
 Lumens Per Watt: 81.9  
 Center Beam Candle Power: 1206  
 Beam Distribution: 108°  
 Spacing Criterion: 1.2  
 Color Rendering Index (CRI)<sup>1</sup>: 94.3  
 Color Temperature (CCT)<sup>2</sup>: 3110K  
 Designed for 50,000 Hour Lamp Life<sup>3</sup>  
 Test No. 14436678.06A

DISTANCE (FT.)	FOOTCANDLES (FC)	BEAM DIAMETER (FT.)
6 FT	33.5	7.3
8 FT	18.9	9.7
10 FT	12.1	12.1
12 FT	8.4	14.6
14 FT	6.2	17.0
16 FT	4.7	19.4



1. Accuracy of Rendering Colors 2. Color Appearance of Light Source 3. Dependent on Surrounding Temperatures 4. Colors Present within the Light Source

## PHOTOMETRIC MULTIPLICATION FACTORS

Lumen output values fluctuate based on Color Temperature and Luminaire Wattage/Output. To estimate lumen output of these options, multiply the 3000K results by the following:

CCT	90+ CRI	CCT	90+ CRI
3500K	1.04	4000K <sup>5</sup>	1.06

5. Consult Factory for Price, Minimum Order quantity and Lead Time for 4000K/90CRI option

DATE

PROJECT

TYPE

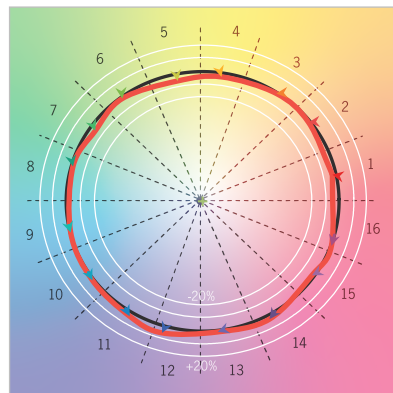
# CTL21 SERIES | Eclipse Linear Track Luminaires

## TM-30 DATA: CTL21230FCD-P

20W 2 Ft. Linear Track, Flood Beam, Dimming Driver, White Finish

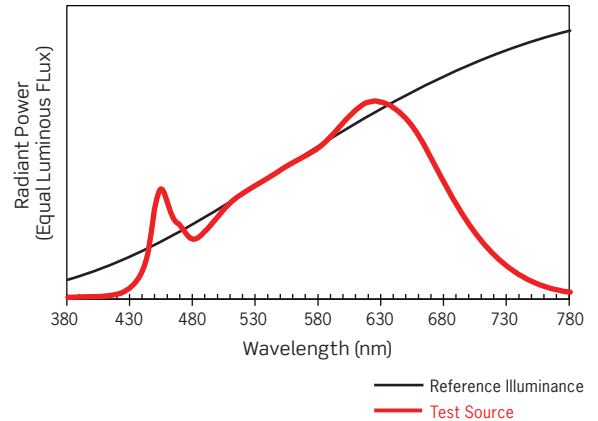
$R_f$	93
$R_g$	99
CCT(K)	3118K
$D_{uv}$	-0.0002
$u^I$	0.2467
$v^I$	0.5186

Color Vector Graphic

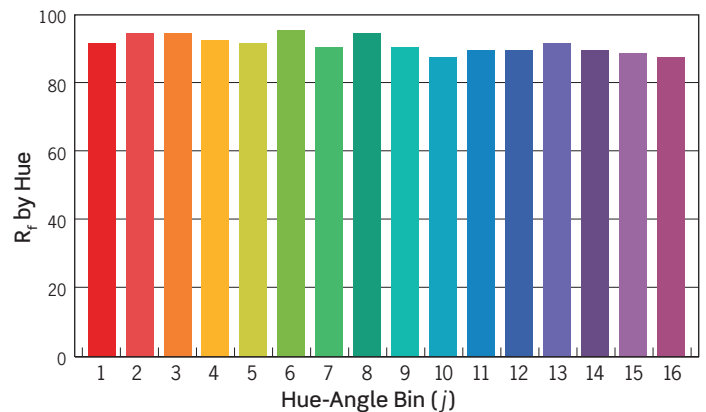
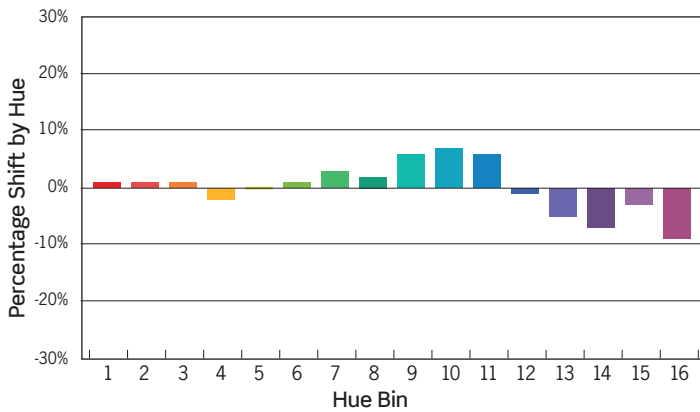


— Reference Illuminance    — Test Source

Spectral Power Distribution Comparison



— Reference Illuminance  
— Test Source



HUE BIN	1	2	3	4	5	6	7	8	9	10	11	12	13	14	15	16
HUE SHIFT	1%	1%	1%	-2%	0%	1%	3%	2%	6%	7%	6%	-1%	-5%	-7%	-3%	-9%
$R_f$ VALUE	93	96	96	94	93	97	92	96	92	89	91	91	93	91	90	89

ANSI/IES TM-30-18 Color Rendition Report Test No. S22072501  
Colors are for visual orientation purposes only