







PLUS Series | P3RA 3-Inch Adjustable Downlight

A family of Adjustables, Downlights, and Wall Wash luminaires; the PLUS Series provides an exceptional balance of performance, quality and value.



FEATURES

- Performance:** Providing outstanding performance, the PLUS Series Adjustable Downlights deliver up to 2500 Lumens, and efficacies up to 100 Lumens per Watt
- Visual Comfort:** Precise optical control with three (3) beam distributions from 19° to 46°; Trims available in Angle-Cut or Beveled
- Light Quality:** Premium quality light source with color consistency within 2 SDCM and excellent color rendering over 90 CRI
- Flexibility:** Designed as a direct install product for effortless installation; additional housing options are available to accommodate a variety of applications

P3RA DOWNLIGHT MODULE	10L	15L	20L	25L
NOMINAL LUMEN OUTPUT ¹	1000Lm	1500Lm	2000Lm	2500Lm
NOMINAL WATTAGE	10W	14W	20W	28W
INPUT VOLTAGE	120V-277V / 347V			
COLOR TEMPERATURE CRI	2700K / 3000K / 3500K / 4000K 80 / 90+ CRI			
BEAM DISTRIBUTIONS	Narrow (19°) / Medium (34°) / Flood (46°)			
DRIVER DIMMING OPTIONS	Phase (Forward / Reverse), 0-10V, Lutron EcoSystem, DALI			
MOUNTING OPTIONS	Direct Mount Remodel Non-IC New Construction Frame Insulated Ceiling (IC) / StopAire™ / Chicago Plenum Housing			
    LISTINGS	cCSAus Certified to UL and CSA Standards; Suitable for Damp Locations IC Housing / Chicago Plenum Housing is CCEA Listed IC Housing conforms to Washington State Energy Code (WSEC) for Low Air Infiltration; tested in accordance with ASTM E283 (2.0 CFM or less) ENERGY STAR® Certification pending CEC Title 24 JA8 pending			
  CCEA Listed WSEC Compliant	WARRANTY Five (5) year replacement after date of purchase Emergency battery backup option covered by a one (1) year replacement guarantee after date of purchase			
SYSTEM RATING	50,000 Hours @ 70% Lumen Maintenance			

1. Approximate lumen output based on 3000K performance; see photometric test results for additional information

PLUS Series | P3RA 3-Inch Adjustable Downlight

ORDERING INFORMATION

MODULE

Example Order: P3RA-25L30KMMVD2 / P3RTA-CLR / P3RA-NC

Series	Lumens	CCT/CRI	Beam Distribution	Electrical/Driver	Options
P3RA PLUS 3-Inch Adjustable Downlight	10L 1000Lm	80+ CRI	N 19° Narrow	ALL MVD DRIVER OPTIONS ARE MULTI-VOLT 120 - 277V MVD Phase (Forward/Reverse)/0-10V Dimming MVD2 0-10V, 1% Dimming MVD4 Lutron Hi-lume EcoSystem 1% Dimming with Soft-on, Fade-to-Black MVD6 ² eldoLED ECOdrive 0-10V, 1% Dimming MVD7 ² eldoLED ECOdrive DALI, 1% Dimming MVD8 ² eldoLED SOLOdrive 0-10V, 0.1% Dimming MVD9 ² eldoLED SOLOdrive DALI, 0.1% Dimming 34D2 347V 0-10V Dimming	ER ³ Emergency Battery Backup with Remote Test Switch
	15L 1500Lm	27K 2700K	M 34° Medium		
	20L 2000Lm	30K 3000K	F 46° Flood		
	25L ¹ 2500Lm	35K 3500K			
		40K 4000K			
		90+ CRI			
		27KC 2700K			
		30KC 3000K			
		35KC 3500K			
		40KC 4000K			

TRIM

Series	Trim Type	Lens	Trim Finish
P3RT P3 PLUS Trim	A Angle-Cut	No Lens Leave Blank	CLR Clear Specular CLRW Clear Specular with White Painted Flange PL Platinum Semi-Specular PLW Platinum Semi-Specular with White Painted Flange WHT ⁴ Matte White BLK ⁴ Matte Black
	B ⁴ Bevel	LSOL Wet Listed Trim with Solite Lens LCL Wet Listed Trim with Clear Lens	

HOUSING

Housing Type
P3RA-NC New Construction Frame: 10-1/2" x 15"
P3RA-ICSA Insulated Ceiling / StopAire™ / Chicago Plenum Housing: 10-1/2" x 15"

- 25L Lumen Option (28W) is not available for use with ICSA Housings and is restricted up to the 20L option max.
- eldoLED Drivers are programmed for Linear Curve Dimming as standard; for Logarithmic Curve Dimming, consult factory
- The ER Emergency Battery Backup for Damp Location only
- Bevel Style Trim available in Black and White Finishes only

REPLACEMENT OPTICS

P3OPT-N	Narrow Beam
P3OPT-M	Medium Beam
P3OPT-FA	Flood Beam

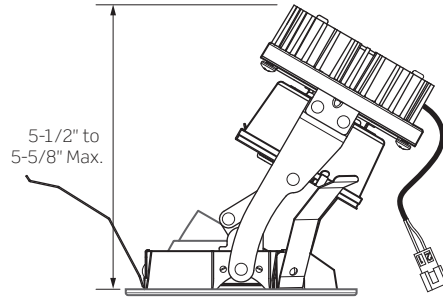
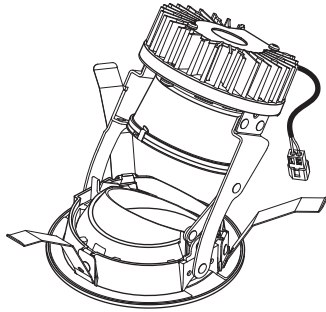
ACCESSORIES

NC Frame / ICSA Housing Accessories	
RL-KIT	Commercial Mounting Brackets
HB-24	27-In. Flat Hanger Bars for RL-KIT
HBC-24	25-In. C-Channel Hanger Bars for RL-KIT in Grid Ceiling Construction
HB-30	T-Bar Hanger Set

Trim Accessories			
FA-64	Trim Media Retention Spring		
3 - Inch Dia. Tempered Glass Lenses			
LF16-CL-75MM	Clear Lens	LF16-A-75MM	Amber Lens
LF16-SL-75MM	Soft Light Lens	LF16-B-75MM	Blue Lens
LF16-SOL-75MM	Solite Lens	LF16-LB-75MM	Light Blue Lens
LF16-LS-75MM	Linear Spread Lens	LF16-G-75MM	Green Lens
LF16-73-75MM	Spread Lens	LF16-R-75MM	Red Lens
		LF16-RO-75MM	Rose Lens
		LF16-Y-75MM	Yellow Lens

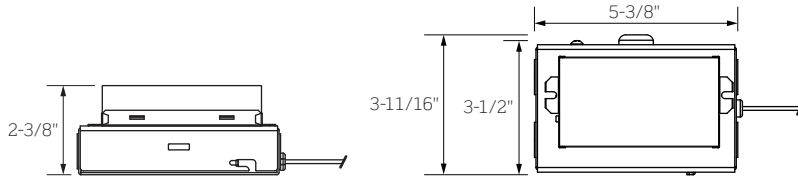
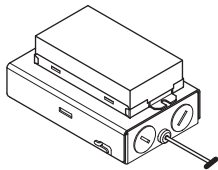
PLUS Series | P3RA 3-Inch Adjustable Downlight

P3 ADJUSTABLE MODULE



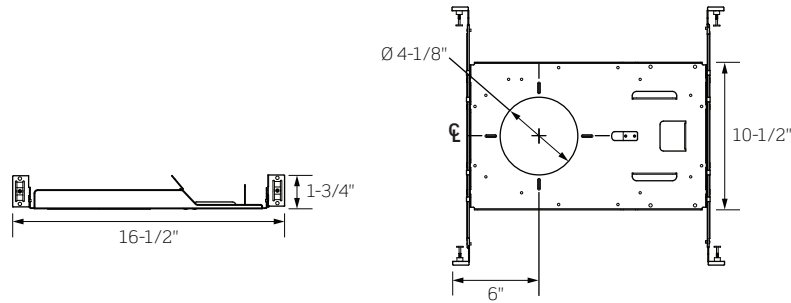
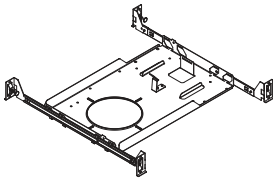
APERTURE DIAMETER	3-1/2"
REFLECTOR FLANGE DIAMETER	4-1/2"
REFLECTOR FLANGE WIDTH	1/2"
CEILING CUTOUT	4"
CEILING THICKNESS	1/2" to 1-1/2"
MODULE CABLE LENGTH	6"
JUNCTION BOX CABLE LENGTH	16"
ADJUSTABILITY RANGE	0° to 40°

P3 ADJUSTABLE DRIVER

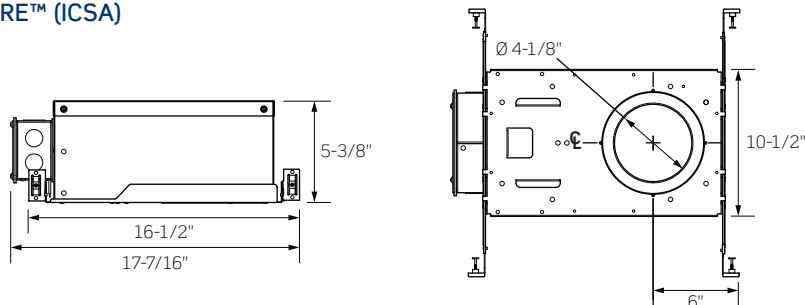
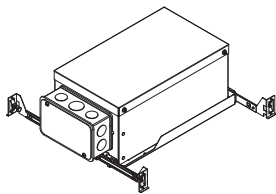


P3 ADJUSTABLE DOWNLIGHT OPTIONAL HOUSINGS

NEW CONSTRUCTION FRAME



INSULATED CEILING/STOIPAIRE™ (ICSA)



PLUS Series | P3RA 3-Inch Adjustable Downlight

PRODUCT SPECIFICATIONS

LIGHT ENGINE

- 2700K, 3000K, 3500K and 4000K; 80 or 90 CRI
- Color consistency within 2 SDCM

ELECTRICAL / DRIVER

- Driver Options include Universal Voltage 120–277V; 347V optional
- Flicker free Dimming Options include 0–10V, Phase (Forward/Reverse), EldoLED (0-10V and DALI), and Lutron EcoSystem
- All Driver Options are accessible and field replaceable from below the ceiling
- Class 2 output with over-voltage, over-current and short circuit protection; >0.9 power factor.

EMERGENCY BATTERY

- 6W Emergency Battery Backup option provides illumination for a minimum duration of 90 minutes
- Certified to UL924 Standard for Emergency Lighting
- Lithium-Ion Battery with self-testing and self-diagnostics
- Available with Remote Test Switch Option
- Emergency Battery Backup is accessible from below the ceiling
- Meets Title 20 CEC (California Energy Commission) efficiency standards

OPTICS

- Three (3) beam distributions are available: Narrow (19°), Medium (34°), and Flood (46°)
- Optics are field interchangeable and provide smooth, striation-free beams

TRIMS

- Self-flanged, Spun Aluminum Angle-Cut Reflectors are available in various finishes: Specular and Semi-specular with and without White Painted Flanges and White and Black Painted finishes
- A Die-cast Bevel Trim is available in White and Black painted finishes, providing a clean, architectural finish
- For Wet Location applications, Trim must include a lens; all Trim Options will accept up to one (1) Lens. See ordering information for available Tempered Glass Lens options.

INSTALLATION

- **CEILING OPENING:** For direct install applications, a ceiling cut-out diameter of 4-inches is required; for applications utilizing the Non-IC Mounting Frame or ICESA Housing, a ceiling cut-out diameter of 4-1/8-inches is required.
- **CEILING THICKNESS:** Accommodates ceiling thicknesses of 1/2- to 1-1/2-inches
- A Module Support Ring is provided to facilitate smooth insertion and removal of the Fixture Module
- A Safety Tether is included for additional support between the Fixture Module and Junction Box / Driver assembly

CONSTRUCTION

- General Fixture construction is designed for quick, direct install into Non-IC applications
- Optional Non-IC Mounting Frame and Insulated Ceiling / StopAire™ (ICESA) Housing available
- Non-IC Mounting Frame is available for new construction applications; includes pre-installed hanger bars and requires a minimum 3-inch clearance around fixture from insulation material
- ICESA Housing is available for new construction applications; includes removal of Universal LED Module and may be used various applications including IC (direct insulation contact), restrictive air flow, and Chicago Plenum
- Adjustable Downlight Module features adjustability up to 40° when installed in a 1/2-inch to 1-inch thick ceiling, to 30° in 1-1/2-inch thick ceilings
- Module includes aiming indicator marks in 15° increments for consistent aiming
- Downlight Module Quick-connect design enables easy installation and removal of Universal LED Module; three (3) Spring Steel Supports secure Module into Housing/ceiling
- LED Module Consists of a Die-Cast Aluminum Heat Sink and Die-Cast Aluminum Mounting Ring, three (3) Steel Mounting Springs ensure secure mounting
- Junction Box / Driver assembly can be easily accessed from below the ceiling; when used with optional Frame or Housing, it is secured with a positive spring latch design
- Fixture Module Junction Box includes four (4) 1/2-inch screwdriver pry-out knockouts
- ICESA Housing includes Junction Box with six (6) 1/2-inch knockouts and one (1) 3/4-inch knockout
- Approved for through circuit wiring: Max. eight (8) 12 AWG (4 in / 4 out), wiring rated to 90°C

CERTIFICATION

- cCSAus Certified to UL and CSA Standards, suitable for Damp Locations. Suitable for Wet Locations (covered ceiling) when Trim is used with a Lens Accessory
- Emergency Battery Backup option is cCSAus certified to UL924 Standard for Emergency Lighting
- ICESA Housings meet the air leakage requirements per ASTM E283; conforms to Washington State Energy Code (WSEC) for low air infiltration
- ICESA Housings are City of Chicago Environmental Air (CCEA) approved
- Title 24 (JA8) certification pending
- ENERGY STAR® certification pending

PLUS Series | P3RA 3-Inch Adjustable Downlight

TRIMS AND TRIM ACCESSORIES

P3RTA: Angle-Cut Reflector Trims

- Reflector Trims will accept one (1) 75mm Lens; the FA-64 Media Retention Spring is required
- For Wet Listing, Lens is required



P3RTA-CLR
Clear Specular

P3RTA-PL
Platinum Semi-Specular

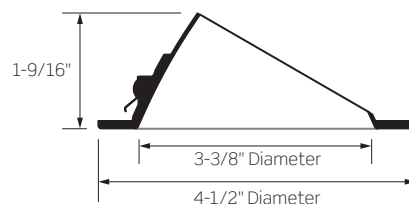
P3RTA-WHT
Matte White

P3RTA-BLK
Matte Black



P3RTA-CLRW
Clear Specular/
White Painted Flange

P3RTA-PLW
Plat. Semi-Specular/
White Painted Flange



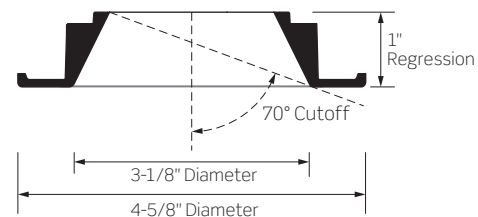
P3RTB: Bevel Trims

- Bevel Trims will accept one (1) 67mm Lens
- Bevel Style Trim available in Black and White Finishes only
- For Wet Listing, Lens is required



P3RTB-WHT
Matte White

P3RTB-BLK
Matte Black



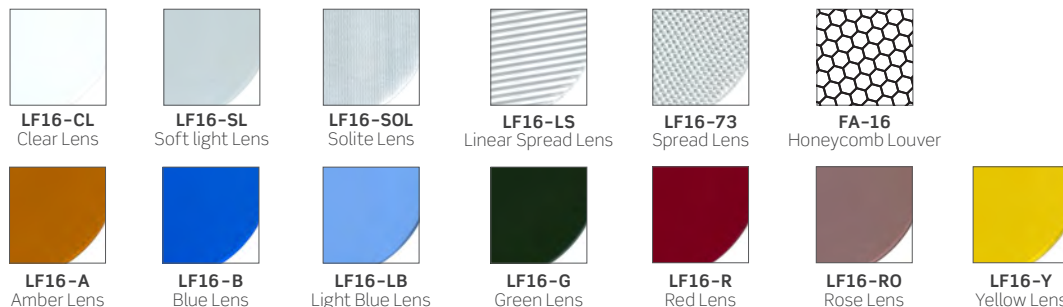
TRIM ACCESSORIES



FA-64
Media Retention Spring

All Trim Options will accept up to one (1) 3-inch Lens. For Wet Location applications, Trim must include Lens. Reflector Trims utilize the FA-64 Media Retention Spring to hold the lens securely in place.

TEMPERED GLASS LENSES (Available in 67mm or 75mm)



LF16-CL
Clear Lens

LF16-SL
Soft light Lens

LF16-SOL
Solite Lens

LF16-LS
Linear Spread Lens

LF16-73
Spread Lens

FA-16
Honeycomb Louver

LF16-A
Amber Lens

LF16-B
Blue Lens

LF16-LB
Light Blue Lens

LF16-G
Green Lens

LF16-R
Red Lens

LF16-RO
Rose Lens

LF16-Y
Yellow Lens

MEDIA MULTIPLIERS

Adding Lenses and Louvers effects lumen output values; to estimate lumen output of these combinations, multiply the published results by the following factors:

FA-16	LF16-73	LF16-CL	LF16-LS	LF16-SL	LF16-SOL	LF16-A	LF16-B	LF16-G	LF16-LB	LF16-R	LF16-RO	LF16-Y
0.60	0.85	0.93	0.75	0.73	0.93	0.48	0.21	0.07	0.53	0.07	0.45	0.80

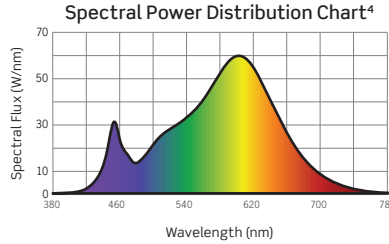
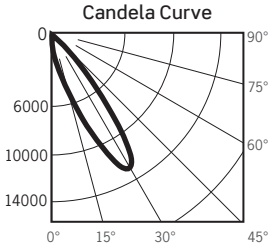
PLUS Series | P3RA 3-Inch Adjustable Downlight Photometrics

PHOTOMETRICS

P3RA-25L30KNMVD / P3RTA-CLR: 3-Inch Adjustable Downlight, Narrow Beam, Clear Reflector

LM-63 Test No. G23120605; LM-79 Test No. S23120401

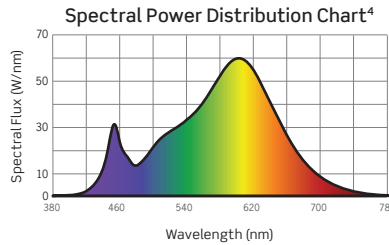
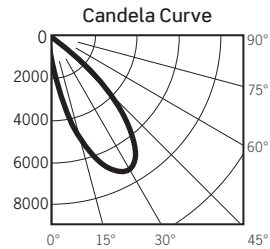
Luminaire aimed 30° from Nadir
 Fixture Delivered Lumens: 2044.5
 Total Watts@120V: 26.9
 Lumens Per Watt: 76.0
 Center Beam Candle Power: 12852
 Beam Distribution: 18.6°
 Color Rendering Index (CRI)¹: 82.6
 Color Temperature (CCT)²: 3099K
 Designed for 50,000 Hour Lamp Life³



P3RA-25L30KMMVD / P3RTA-CLR: 3-Inch Adjustable Downlight, Medium Beam, Clear Reflector

LM-63 Test No. G23120601; LM-79 Test No. S23120401

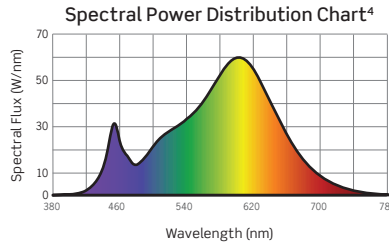
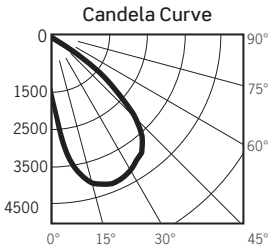
Luminaire aimed 30° from Nadir
 Fixture Delivered Lumens: 2410.9
 Total Watts@120V: 26.8
 Lumens Per Watt: 90.0
 Center Beam Candle Power: 7323
 Beam Distribution: 34°
 Color Rendering Index (CRI)¹: 82.6
 Color Temperature (CCT)²: 3099K
 Designed for 50,000 Hour Lamp Life³



P3RA-25L30KFMVD / P3RTA-CLR: 3-Inch Adjustable Downlight, Flood Beam, Clear Reflector

LM-63 Test No. G24011901; LM-79 Test No. S23120401

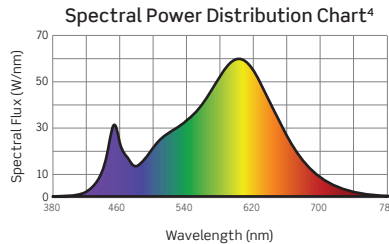
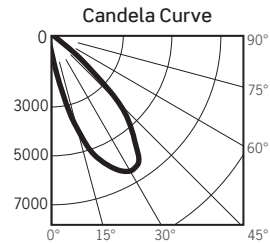
Luminaire aimed 30° from Nadir
 Fixture Delivered Lumens: 2309.9
 Total Watts@120V: 26.8
 Lumens Per Watt: 86.2
 Center Beam Candle Power: 4173
 Beam Distribution: 46°
 Color Rendering Index (CRI)¹: 82.6
 Color Temperature (CCT)²: 3099K
 Designed for 50,000 Hour Lamp Life³



P3RA-25L30KMMVD / P3RTB-WHT: 3-Inch Adjustable Downlight, Medium Beam, White Bevel Trim

LM-63 Test No. G23120606; LM-79 Test No. S23120401

Luminaire aimed 30° from Nadir
 Fixture Delivered Lumens: 2097.4
 Total Watts@120V: 26.9
 Lumens Per Watt: 78.0
 Center Beam Candle Power: 6507
 Beam Distribution: 34°
 Color Rendering Index (CRI)¹: 82.6
 Color Temperature (CCT)²: 3099K
 Designed for 50,000 Hour Lamp Life³



1. Accuracy of Rendering Colors 2. Color Appearance of Light Source 3. Dependent on Surrounding Temperatures 4. Colors Present within the Light Source

PHOTOMETRIC MULTIPLIERS

Lumen output values fluctuate based on Color Temperature (CCT), Color Rendering Index (CRI) and Wattage. To estimate lumen output of other combinations, multiply the published results by the following factors:

CCT MULTIPLIERS		
CCT	80+ CRI	90+ CRI
2700K	0.95	0.84
3000K	1.00	0.87
3500K	1.02	0.90
4000K	1.04	0.92

OUTPUT MULTIPLIERS			
10L SERIES	15L SERIES	20L SERIES	25L SERIES
0.41	0.56	0.76	1.00

TRIM FINISH MULTIPLIERS		
FINISH	P3RTR REFLECTOR	P3RTB BEVEL
CLEAR (SPECULAR)	1.00	N/A
PLATINUM (SEMI-SPECULAR)	1.01	N/A
MATTE WHITE	1.00	1.00
MATTE BLACK	0.96	0.96

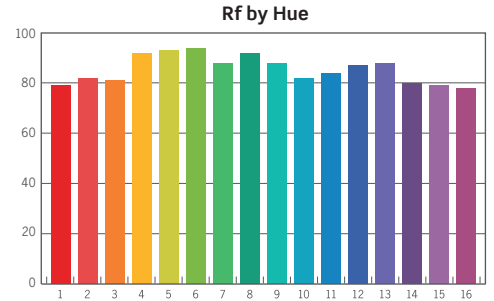
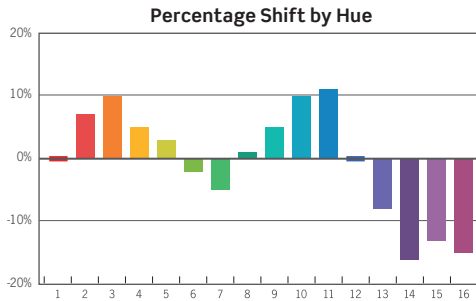
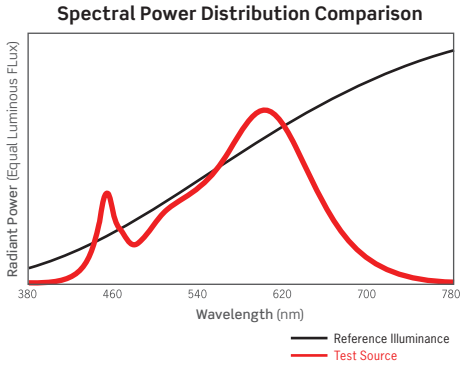
PLUS Series | P3RD 3-Inch Downlight Photometrics

PHOTOMETRICS: TM-30 DATA

Colors are for visual orientation purposes only

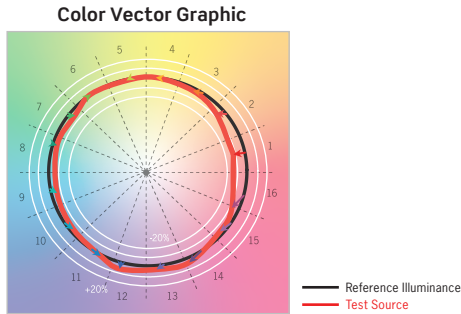
Clear Reflector, 80+ CRI

ANSI/IES TM-30-18 Color Rendition Report Test No. S23120401



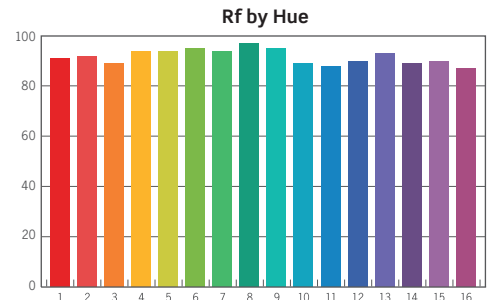
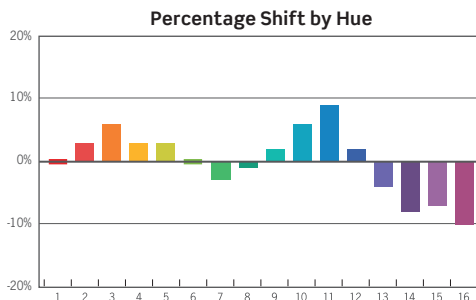
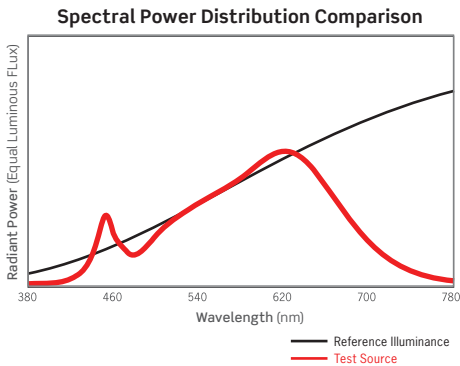
HUE BIN	1	2	3	4	5	6	7	8	9	10	11	12	13	14	15	16
HUE SHIFT	0%	7%	10%	5%	3%	-2%	-5%	1%	5%	10%	11%	0%	-8%	-16%	-13%	-15%
R _f VALUE	79	82	81	92	93	94	88	92	88	82	84	87	88	80	79	78

R _f	85
R _g	94
CCT(K)	3099K
D _{uv}	0.0007
u ^t	0.2470
v ^t	0.5203



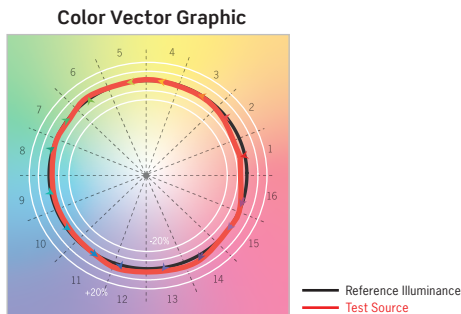
Clear Reflector, 90+ CRI

ANSI/IES TM-30-18 Color Rendition Report Test No. S23120402



HUE BIN	1	2	3	4	5	6	7	8	9	10	11	12	13	14	15	16
HUE SHIFT	0%	3%	6%	3%	3%	0%	-3%	-1%	2%	6%	9%	2%	-4%	-8%	-7%	-10%
R _f VALUE	91	92	89	94	94	95	94	97	95	89	88	90	93	89	90	87

R _f	92
R _g	100
CCT(K)	3024K
D _{uv}	-0.0004
u ^t	0.2499
v ^t	0.5203



PLUS Series | P3R 3-Inch Downlight Dimming Specifications

- Incandescent 120V AC Dimmers adjust the light with Forward Phase Control, where the Dimmer “chops” the forward part of the AC Wave to deliver less or more power to the light source. No Neutral Wire Connection required.
- Electronic Low Voltage 120V AC Dimmers adjust the light with Reverse Phase Control, where the Dimmer “chops” the back part of the AC Wave to deliver less or more power to the light source. Neutral Wire Connection required.
- 0 –10V DC Low Voltage Dimmers operate using two (2) Low Voltage Dimming Wires that are separate from the 120V or 277V AC Power. The Dimmer sends a Variable Output Voltage to the luminaire based upon the dimming level. 10V Corresponds to undimmed operation, 5V to 50% and so on. Switching On/Off

is controlled with the Line Voltage Power Input to the Dimmer (120V or 277V AC). Dimming operation is controlled with the 0 –10V DC Low Voltage Wiring Connection between the Dimmer and the LED Driver. The Control Signal runs on two (2) low voltage control wires color coded Violet and Pink/Gray.

- Lutron EcoSystem Drivers provide continuous dimming from 1% –100%. For a complete list of compatible Dimmers and Controls, visit www.lutron.com
- Use DALI approved Controls for dimming eldoLED ECOdrive, 1% Dimming (Dimming Option MVD7) and eldoLED SOLdrive, 0.1% Dimming (Dimming Option MVD9).

MANUFACTURER	PRODUCT	MODEL	LIGHT OUTPUT			
			MVD Forward/Reverse Phase	MVD2 0-10V	MVD6 eldoLED ECOdrive 0-10V	MVD8 eldoLED SOLdrive 0-10V
Leviton	IllumaTech	IPI06-1LZ	1%-100%	NA	NA	NA
Leviton	Vizia	VPE06	9%-100%	NA	NA	NA
Leviton	Trimatron	6683-IW	6%-100%	NA	NA	NA
Leviton	Decora	6161	15%-100%	NA	NA	NA
Leviton	SureSlide	6633-P	1%-100%	NA	NA	NA
Leviton	IllumaTech	IPE04	6%-100%	NA	NA	NA
Leviton	IllumaTech	IP710-DLX	NA	1%-100%	1%-100%	0.1%-100%
Cooper	Devine	DLC03P	1%-100%	NA	NA	NA
Cooper	Skye	SLC03P	0%-100%	NA	NA	NA
Cooper	Decorator	DAL06P	0%-100%	NA	NA	NA
Pass & Seymour	Titan	CD4FB-W	NA	1%-100%	1%-100%	0.1%-100%
Synergy	ISD Series	ISD BC	NA	1%-100%	1%-100%	0.1%-100%
Watt Stopper	Miro Decorator	DCLV1	NA	1%-100%	1%-100%	0.1%-100%
Lutron	Ariadni	TGCL-153P	1%-100%	NA	NA	NA
Lutron	Ariadni	TG-600P	13%-100%	NA	NA	NA
Lutron	Diva	DVCL-153P	1%-100%	NA	NA	NA
Lutron	Diva	DV600P	6%-100%	NA	NA	NA
Lutron	Diva	DVELV303P	6%-100%	NA	NA	NA
Lutron	Diva	DVTV	NA	1%-100%	1%-100%	0.1%-100%
Lutron	Faedra	FAELV500	12%-100%	NA	NA	NA
Lutron	Lumea	LG600P	8%-100%	NA	NA	NA
Lutron	Maestro	MAELV600	16%-100%	NA	NA	NA
Lutron	Nova	NFTV	NA	1%-100%	1%-100%	0.1%-100%
Lutron	Nova T	NTFTV	NA	1%-100%	1%-100%	0.1%-100%
Lutron	Skylark	S-603PG	5%-96%	NA	NA	NA
Lutron	Skylark	S600P	5%-100%	NA	NA	NA
Lutron	Skylark	SELV300P	10%-100%	NA	NA	NA
Lutron	Skylark	CT103P	9%-100%	NA	NA	NA

NOTES

1. Testing was performed with a single luminaire connected to Dimmer.
2. Testing has been performed on these Dimmers, but this does not imply any warranty of compatibility.
3. Dimming performance can be influenced by different Loads, as well as variations in Dimmer Switches within the same Model.
4. Dimmer Maximum Load Rating with LEDs may differ from published Traditional Source Dimmer Ratings. Consult manufacturer for maximum Dimmer information.
5. Consult factory for additional dimming information.