

DATE

PROJECT

TYPE

R6 SERIES | Trims for 6 Inch BIOS LED Downlights

TRIMMED OPTIONS, CONTINUED



C6322 - CLR
Clear Specular Reflector



C6323-CLR
Clear Reflector



C6322 Series

Specification Grade Reflector

5-3/4 Inch ID, 7 Inch OD, 4-1/4 Inch Height

Specification Grade Reflector. For Wet Location approved trim, add “-C” for Clear Lens or “-SL” for Sandblast Lens after finish code.

C6323 Series

Lensed Wall Wash Reflector Trim

5-5/8 Inch ID, 7 Inch OD, 4-1/4 Inch Height

- | | |
|------------------------------------------------------------------|-----------------|
| C6322M-CLR* - 65° Medium Beam
Clear Specular Reflector | Quantity |
| C6322W-CLR* - 75° Wide Beam
Clear Specular Reflector | |
| C6322-PL* - 69° Platinum Reflector | |
| C6322-PLWHE - 69° Platinum Wheat Reflector | |
| C6322-WHT - 72° White Reflector | |

**Available with White Painted Flange, add “-WPF” to end of part number*

- | | |
|---------------------------------------|-----------------|
| C6323-CLR* - Clear Reflector | Quantity |
| C6323-PL* - Platinum Reflector | |
| C6323-WHT - White Reflector | |

**Available with White Painted Flange, add “-WPF” to end of part number*



CTR6325L2-WHT-P
Floating Glass Disc,
White Reflector

CTR6325L2 Series

Floating Glass Disc

5-3/4 Inch ID; 8-3/4 Inch OD

White Reflector with Floating Glass Disc; 1-1/4-inch drop from ceiling.

- | | |
|------------------------------------------------------------------|-----------------|
| CTR6325L2-WHT-P - Floating Glass Disc/
White Reflector | Quantity |
|------------------------------------------------------------------|-----------------|

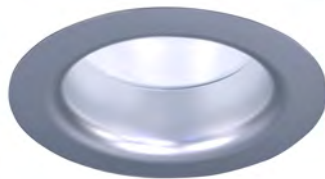
DATE

PROJECT

TYPE

R6 SERIES | Trims for 6 Inch BIOS LED Downlights

TRIMMED OPTIONS



C6321-WHT-PL

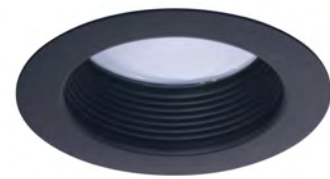
White Reflector/Platinum Lower Cone



C6321 Cone Series

Two Piece Reflector with Lower Cone and Flat Lens
5-3/4 Inch ID, 7 Inch OD, 4-1/4 Inch Height

Two Piece Reflector: White Upper Reflector, Clear or Platinum Lower Cone. Includes one (1) LF38-CL Clear Glass Lens. Approved for Wet Locations when Glass Lens is installed.



C6321-WHT-B

White Reflector/Black Baffle



C64321 Baffle Series

Two Piece Reflector with Lower Baffle and Flat Lens
5-3/4 Inch ID, 7 Inch OD, 4-1/4 Inch Height

Two Piece Reflector: White Upper Reflector, Black or White Lower Baffle. Includes one (1) LF38-CL Clear Glass Lens. Approved for Wet Locations when Glass Lens is installed.

- | | |
|--------------------------------------------------------------|-----------------|
| C6321-WHT-CLR - White Reflector
Clear Lower Cone | Quantity |
| C6321-WHT-PL - White Reflector
Platinum Lower Cone | |

- | | |
|---------------------------------------------------------------|-----------------|
| C6321-WHT-CLR - White Reflector/
Clear Lower Cone | Quantity |
| C6321-WHT-PL - White Reflector/
Platinum Lower Cone | |



C6327-CLR-PL

Clear Reflector/Platinum Lower Cone/
Regressed Prismatic Convex Lens



C6327 Cone Series

Two Piece Reflector:
Lower Cone with Prismatic Convex Lens
5-3/4 Inch ID, 7 Inch OD, 4-1/4 Inch Height

Two Piece Reflector with Lens: Clear or White Upper Reflector, Clear or Platinum Lower Cone, Prismatic Convex Lens. Wet Location Listed.



C6327-CLR-P

Clear Reflector/White Lower Baffle/
Regressed Prismatic Convex Lens



C6327 Baffle Series

Two Piece Reflector:
Lower Baffle with Prismatic Convex Lens
5-3/4 Inch ID, 7 Inch OD, 4-1/4 Inch Height

Two Piece Reflector with Lens: Clear or White Upper Reflector, Black or White Lower Baffle, Regressed Prismatic Convex Lens with 1-1/2 inch regress. Wet Location Listed.

- | | |
|---------------------------------------------------------------|-----------------|
| C6327-CLR-CLR - Clear Reflector/
Clear Lower Cone | Quantity |
| C6327-CLR-PL - Clear Reflector/
Platinum Lower Cone | |
| C6327-WHT-CLR - White Reflector/
Clear Lower Cone | |
| C6327-WHT-PL - White Reflector/
Platinum Lower Cone | |

- | | |
|---------------------------------------------------------|-----------------|
| C6327-CLR-B - Clear Reflector/Black Lower Baffle | Quantity |
| C6327-CLR-P - Clear Reflector/White Lower Baffle | |
| C6327-WHT-B - White Reflector/Black Lower Baffle | |
| C6327-WHT-P - White Reflector/White Lower Baffle | |

DATE

PROJECT

TYPE

R6 SERIES | Trims for 6 Inch BIOS LED Downlights

TRIMLESS OPTIONS

Trimless Options require use of Mud Frame accessory (MF4, ordered separately)



CN6322 * - CLR
Specular Clear Reflector
Multiple Beam Spreads



CN6323-CLR
Clear Reflector



CN6322 Series

Specification Grade Trimless Reflector
5-7/8 Inch ID, 6-1/4 Inch OD, 4-1/4 Inch Height

Specification Grade Reflector. **Trim cannot be used on Remodel Housings (R6RM) or with Slope Ceiling Adapters (RSA6L).** For use with 1/2- to 1 inch ceiling thicknesses only. For Wet Location approved trim, add “-C” for Clear Lens or “-SL” for Sandblast Lens after finish code.

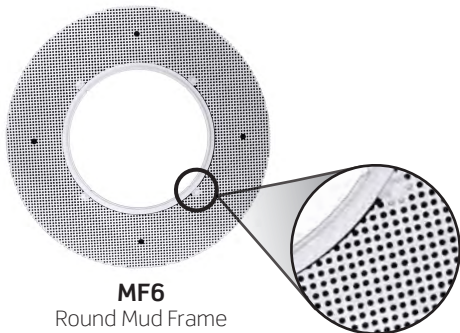
CN6323 Series

Trimless Lensed Wall Wash Reflector Trim
5-5/8 Inch ID; 6-1/4 Inch OD

Trim cannot be used on Remodel Housings (R6RM) or with Slope Ceiling Adapters (RSA6L). For use with 1/2- to 1 inch ceiling thicknesses only.

	Quantity
CN6322M-CLR - 65° Medium Beam Clear Specular Reflector	
CN6322W-CLR - 75° Wide Beam Clear Specular Reflector	
CN6322-PL - 69° Platinum Reflector	
CN6322-WHT - 72° White Reflector	

	Quantity
CN6323-CLR - Clear Reflector	
CN6323-PL - Platinum Reflector	
CN6323-WHT - White Reflector	



MF6
Round Mud Frame

MF6 Series

Round Mud Frame
12 Inch OD

Required for use with trimless options. Die-cast Ring with Steel Mesh Frame. Painted white.

	Quantity
MF6 - 6 Inch Mud Frame	