

DATE

PROJECT

TYPE

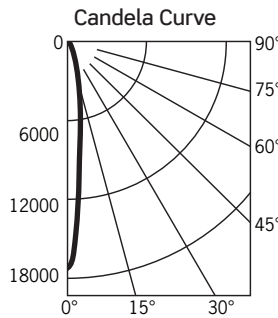
CTL806*C | O2 Mini LED Canopy Mount Luminaires

PHOTOMETRICS

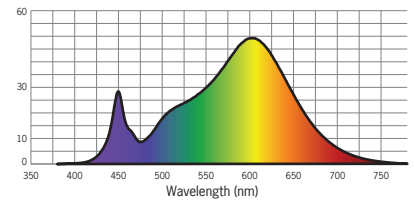
CTL8063HS3D

Fixture Delivered Lumens: 2237.12
 Total Watts@120V: 19.905
 Lumens Per Watt: 112.418
 Center Beam Candle Power: 17279
 Beam Distribution: 10.24°
 Spacing Criterion: 0.2893
 Color Rendering Index (CRI)¹: 82.9
 Color Temperature (CCT)²: 3071K
 Designed for 50,000 Hour Lamp Life³
 LM-63 Test No. G24012603
 LM-79 Test No. S24012901

Intensity Distribution		
DISTANCE (FT.)	FOOTCANDLES (FC)	BEAM DIAMETER (FT.)
4'	1079.9	0.72
6'	480.0	1.08
8'	270.0	1.43
10'	172.8	1.79
12'	120.0	2.15
14'	88.2	2.51



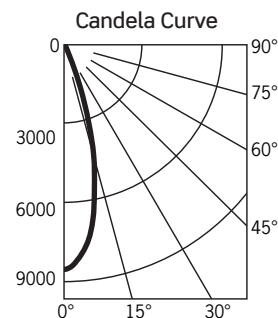
Spectral Power Distribution Chart⁴



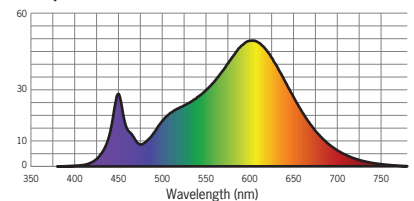
CTL8063HM3D

Fixture Delivered Lumens: 2327.82
 Total Watts@120V: 19.914
 Lumens Per Watt: 116.976
 Center Beam Candle Power: 8558
 Beam Distribution: 28.34°
 Spacing Criterion: 0.4765
 Color Rendering Index (CRI)¹: 82.9
 Color Temperature (CCT)²: 3071K
 Designed for 50,000 Hour Lamp Life³
 LM-63 Test No. G24012604
 LM-79 Test No. S24012901

Intensity Distribution		
DISTANCE (FT.)	FOOTCANDLES (FC)	BEAM DIAMETER (FT.)
4'	534.9	2.02
6'	237.7	3.03
8'	133.7	4.04
10'	85.6	5.05
12'	59.4	6.06
14'	43.7	7.07



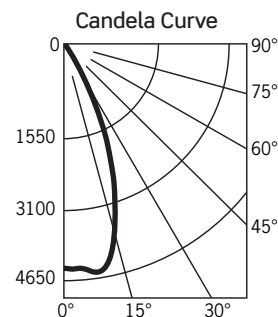
Spectral Power Distribution Chart⁴



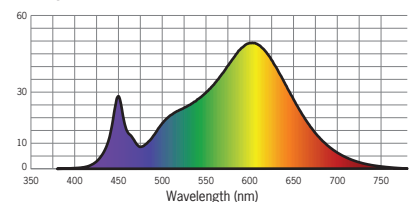
CTL8063HF3D

Fixture Delivered Lumens: 2293.43
 Total Watts@120V: 19.9
 Lumens Per Watt: 115.248
 Center Beam Candle Power: 3802
 Beam Distribution: 47.56°
 Spacing Criterion: 0.7051
 Color Rendering Index (CRI)¹: 82.9
 Color Temperature (CCT)²: 3071K
 Designed for 50,000 Hour Lamp Life³
 LM-63 Test No. G24012605
 LM-79 Test No. S24012901

Intensity Distribution		
DISTANCE (FT.)	FOOTCANDLES (FC)	BEAM DIAMETER (FT.)
4'	237.6	3.53
6'	105.6	5.29
8'	59.4	7.05
10'	38.0	8.81
12'	26.4	10.58
14'	19.4	12.34



Spectral Power Distribution Chart⁴



1. Accuracy of rendering colors 2. Color appearance of light source 3. Dependent on surrounding temperatures 4. Colors present within the light source

PHOTOMETRIC MULTIPLICATION FACTORS

Lumen output values fluctuate based on Color Temperature and Luminaire Wattage/Output. To estimate lumen output of these various options, multiply 3000K results by the following:

CCT MULTIPLIERS				OUTPUT MULTIPLIERS	
CCT	STD CRI	HIGH CRI	CRISP WHITE	10W/SERIES 1	14W/SERIES 2
2700K	.949	.842	N/A	0.539	0.74
3000K	N/A	.872	.488		
3500K	1.02	.895	N/A		
4000K	1.04	.916	N/A		

DATE

PROJECT

TYPE

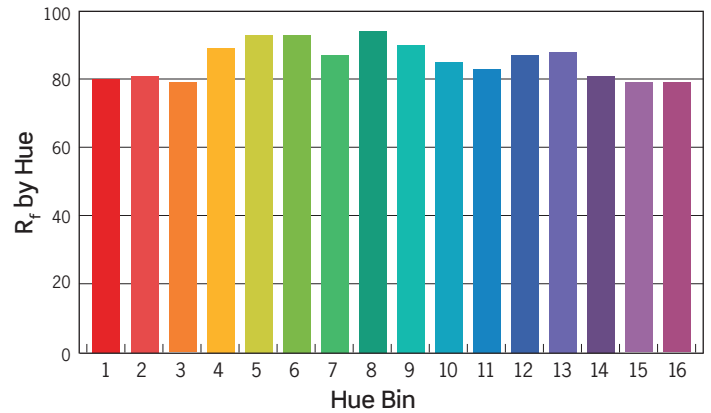
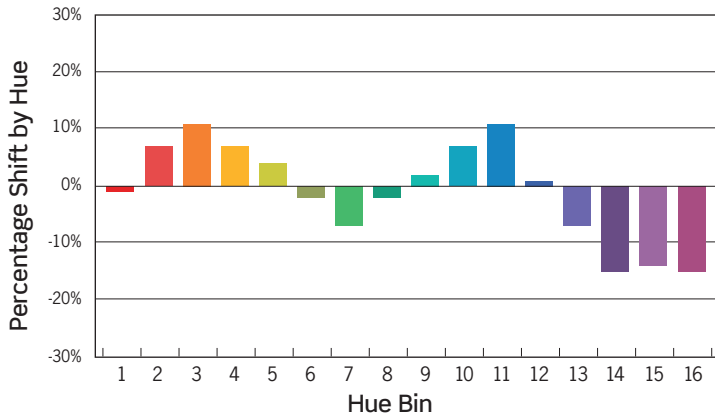
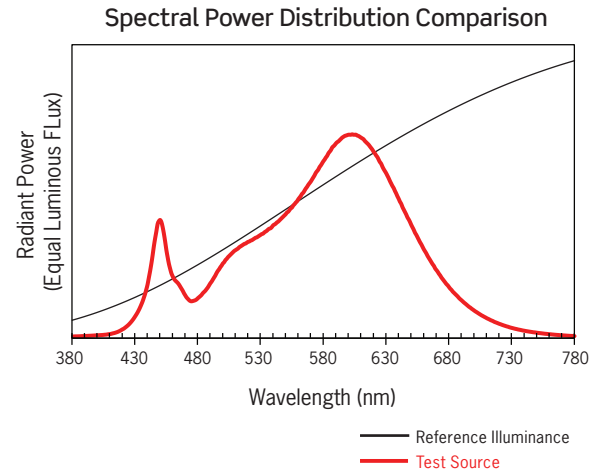
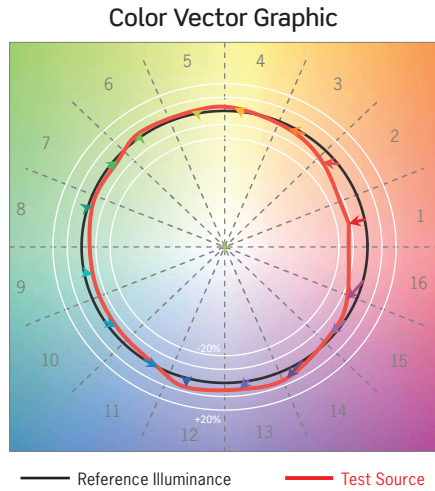
CTL806*C | O2 Mini LED Canopy Mount Luminaires

PHOTOMETRICS

TM-30 Data: CTL8063HM3D

ANSI/IES TM-30-18 Color Rendition Report Test No. S24012901

R_f	86
R_g	96
CCT(K)	3071 K
D_{uv}	-0.0001
u^I	0.2481
v^I	0.5199



HUE BIN	1	2	3	4	5	6	7	8	9	10	11	12	13	14	15	16
HUE SHIFT	1%	7%	11%	7%	4%	-2%	-7%	-2%	2%	7%	11%	1%	-7%	-15%	-14%	-15%
R_f VALUE	80	81	79	89	93	93	87	94	90	85	83	87	88	81	79	79

Colors are for visual orientation purposes only