

INSTALLATION INSTRUCTIONS | ADA Compliant Wall Mount 3-1/2" Indoor/Outdoor Cylinders

Note: Before attempting installation please refer to your local electrical code

IMPORTANT SAFETY INSTRUCTIONS

Installation, inspection and maintenance of this luminaire must be carried out by a qualified electrician.

Read all the instructions before installation. Save instructions for later use.

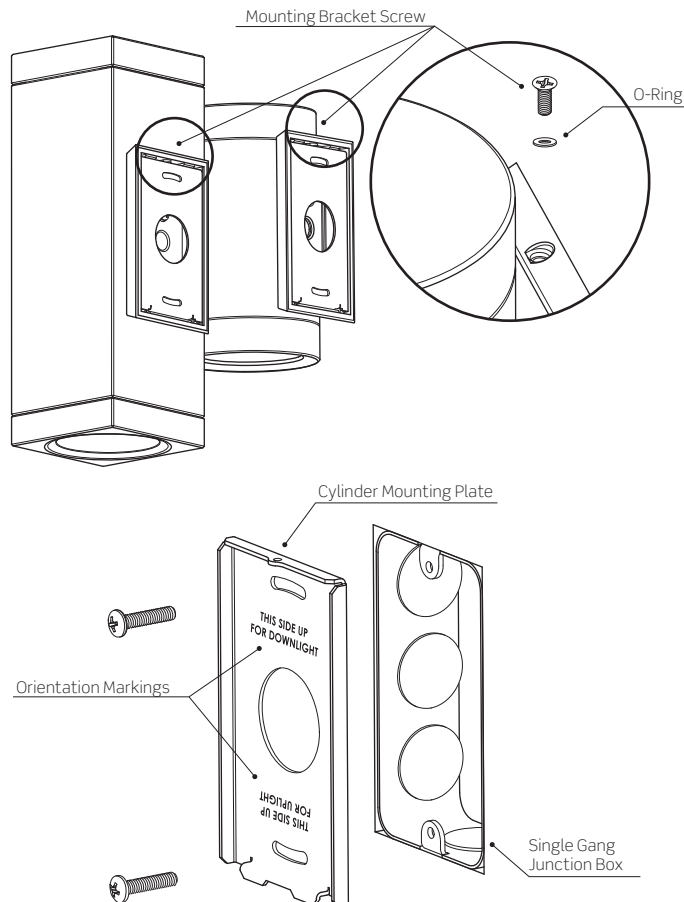
When installing or using this luminaire, all basic safety precautions, warnings, restrictions and recommendations must be followed, including the following:

- Turn off power at fuse or circuit breaker box before installation and before performing any maintenance work
- Product must be grounded to avoid potential electric shock and any other potential hazards
- Wear rubber soled shoes, proper safety glasses and gloves, and work on a sturdy wooden or non-conductive ladder
- Product must be mounted in locations and at heights in compliance with the NEC and all local building codes
- Installing contrary to instructions may cause unsafe conditions
- Do not exceed the nominal supply voltage or amperage ratings
- Do not install any luminaire assembly closer than 6-inches from any curtains or combustible materials
- Do not mount near gas or electric heaters
- Do not block the light from the luminaire, in whole or in part, as this may cause unsafe conditions
- Make sure the supply voltage is the same as the rated luminaire voltage
- Do not operate in ambient temperatures above those specified for the luminaire
- Avoid direct eye contact with the light source
- Always support the weight of the luminaire
- Use correctly rated supply conductors as indicated by the luminaire labeling
- Equipment should be mounted in location and at heights where it will not readily be subject to tampering by unauthorized personnel
- To avoid hazards to children, account for all parts and properly dispose of all packing materials
- **WARNING**
Risk of fire; most dwellings built before 1985 have supply wire rated at 60°C. Consult a qualified electrician before installation.
- Call the Technical Support Department at ConTech Lighting with any installation questions: 847.559.5500

INSTALLATION

NOTE: Luminaire is designed to mount flush to wall surface

1. Detach the Wall Mounting Bracket from the back of the luminaire by removing the Screw and O-ring
2. Determine proper orientation for the Wall Mounting Bracket according to markings on bracket
3. Mount the Bracket (Figure 2)
4. Follow the wiring diagram (see Page 2) for the appropriate electrical/dimming option
5. Carefully feed any excess wire into the Junction Box to avoid pinching any wires
6. Re-attach Cylinder to the Wall Mounting Bracket and secure in place with screw and O-ring from Step 1
7. **FOR LUMINAIRES RATED AND INSTALLED IN WET LOCATIONS:**
Apply an outdoor rated caulk between the Wall and the Luminaire to ensure a water tight seal



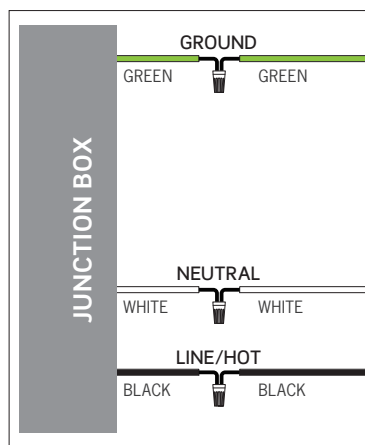
INSTALLATION INSTRUCTIONS | CY3 Series 3-1/2" Round Indoor/Outdoor Cylinders: Wiring Diagrams

Note: Before attempting installation please refer to your local electrical code

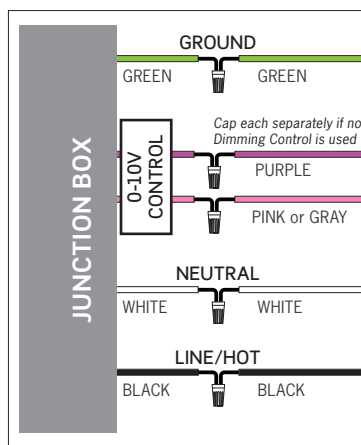
WIRING DIAGRAMS

DIMMING OPTIONS

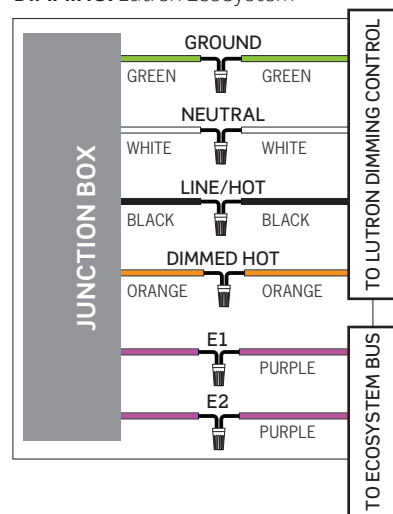
DIMMING OPTION: 12D1
ELECTRICAL: 120V
DIMMING: Forward/Reverse Phase



DIMMING OPTION: MVD2
ELECTRICAL: 120V or 277V
DIMMING: 0-10V



DIMMING OPTION: MVD4
ELECTRICAL: 120V or 277V
DIMMING: Lutron EcoSystem®



RDB REMOTE DRIVER OPTION

