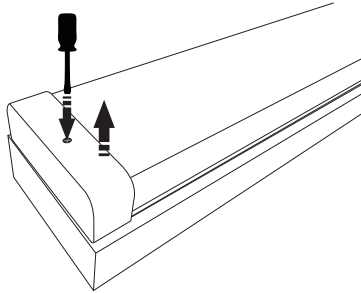


ENSURE THAT POWER IS TURNED OFF BEFORE INSTALLATION.

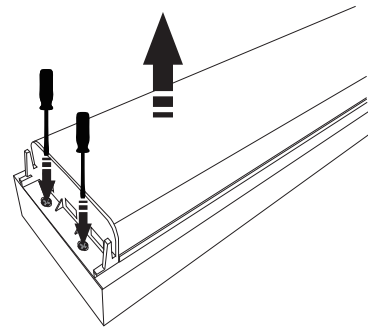
1

Remove the screws and pull out the plastic end cap upwards.



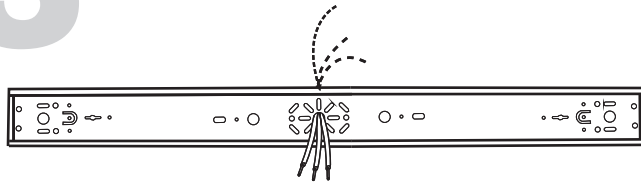
2

Remove the screws and aluminum plate.



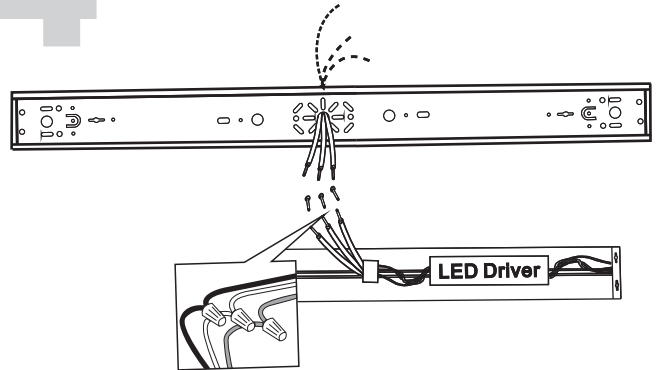
3

Pass the power supply through the entry hole.



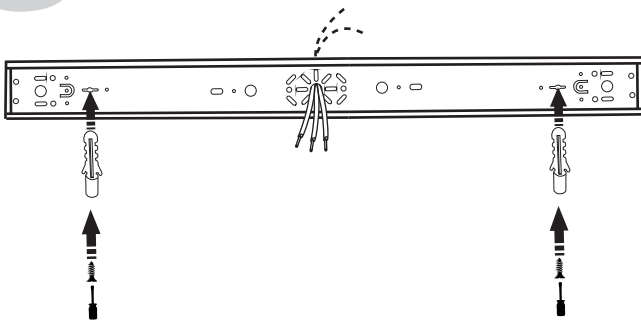
4

Connect the power supply by wire nuts



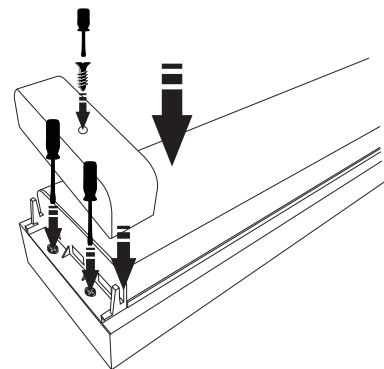
5

Mount the channel to the ceiling structure. Screw the channel to the electrical junction box.



6

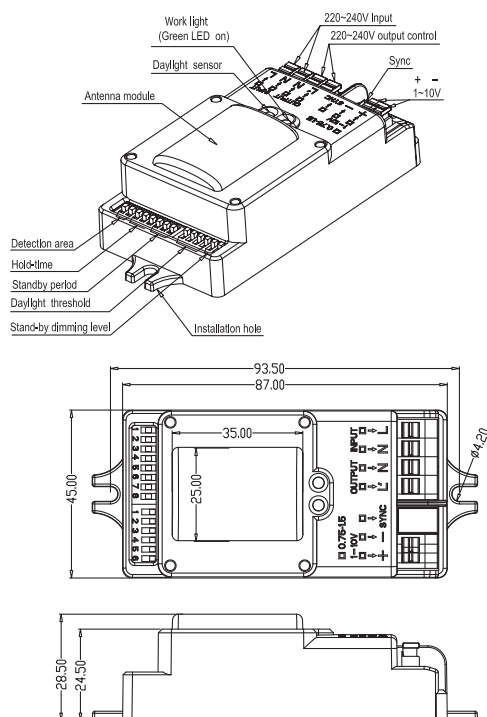
Reinstall the screws and plastic cover.



IMPORTANT SAFETY INSTRUCTIONS:

- Read all the instructions before installation. Save instructions for later use.
- Turn off the power at fuse or circuit breaker box before installation or maintenance work.
- Wear rubber soled shoes and work on a sturdy wooden or non-conductive ladder.
- Product must be mounted in locations and at heights in compliance with National Electrical Code and local building codes. For indoor use only.
- Do not exceed the nominal supply voltage or amperage ratings.
- Installing contrary to instructions may cause unsafe conditions.
- **Warning:** Risk of fire. Most dwellings built before 1985 have supply wire rated at 60°C. Consult a qualified electrician before installation.
- Avoid hazards to children: account for all parts and properly dispose of all packing materials.
- Call the Technical Support department at ConTech Lighting with any installation questions.

MICROWAVE MOTION SENSOR DIMMING SENSOR



Operating Voltage	120~277VAC, 50Hz/60Hz
Rated Capacitive Load	120V@400W; 220-240V@800W; 277V@1000W
HF System	5.8GHz±75MHz, ISM Wave Band
Transmitting Power	<0.5mW
Power Consumption	≤0.5W (Standby), <1W (Operation)
Detection Zone	Max. (DxH): 16m x 15m
Detection Sensitivity	10%/50%/75%/100%
Hold Time	5s/30s/90s/3min/20min/30min
Daylight Sensor	2lux/5lux/10lux/25lux/50lux/100lux/Disable
Stand-by Period	0s/5s/5min/10min.30min/1h/+∞
Stand-by Dimming Level	10%/20%/30%/50%
Mounting Height	15m Max
Motion Detection	0.5~3m/s
Detection Angle	150° Wall Installation, 360° Ceiling Installation
Operating Temperature	-35°C~70°C
IP Rating	IP20

SETTING THE MICROWAVE MOTION SENSOR DIMMING SENSOR

By selecting the combination on the DIP switches, sensor data can be precisely set for each specific application.

Detection Area

Detection area can be reduced by selecting the combination on the DIP switches to fit precisely each application.

	1	2	
I	ON	ON	100%
II	ON	-	75%
III	-	ON	50%
IV	-	-	10%

Hold Time

Refers to the time period the lamp remains at 100% illumination after no motion is detected.

	3	4	5	
I	ON	ON	ON	5s
II	-	ON	ON	30s
III	ON	-	ON	90s
IV	-	-	ON	3min
V	ON	ON	-	20min
VI	-	-	-	30min

Stand-by Period

Refers to the time period the lamp remains at a low light level before it completely switches off in the lon absence of people. When set to "+∞" mode, the low light is maintained until motion is detected.

	6	7	8	
I	ON	ON	ON	0s
II	-	ON	ON	5s
III	ON	-	ON	5min
IV	-	-	ON	10min
V	ON	ON	-	30min
VI	-	ON	-	1h
VII	-	-	-	+∞

Daylight Sensor

The sensor can be set to only allow the lamp to illuminate below a defined ambient brightness threshold. When set to disable mode, the daylight sensor will switch on the lamp when motion is detected regardless of ambient light level.

50lux, 30lux: Twilight operation; 10lux, 5lux: darkness operation only.
Note that daylight sensor is active only when lamp totally switches off.

	1	2	3	4	
I	-	-	ON	ON	2Lux
II	-	-	-	ON	5Lux
III	-	ON	ON	-	10Lux
IV	-	-	ON	-	25Lux
V	-	ON	-	-	50Lux
VI	ON	-	-	-	100Lux
VII	-	-	-	-	Disable

Standby Dimming Level

The low light level you would like to have after the hold time in the long absence of people.

	5	6	
I	ON	ON	50%
II	-	ON	30%
III	ON	-	20%
IV	-	-	10%