

INSTALLATION INSTRUCTIONS | PrecedentPro PPR04/PPR08 Series Linear Suspended Luminaires

The important safeguards and instructions here are not meant to cover all possible conditions and situations that may occur.

IMPORTANT SAFETY INSTRUCTIONS:

- **WARNING: TO AVOID FIRE, SHOCK OR DEATH**, disconnect power at circuit breaker before installing or servicing device
- **WARNING: TO AVOID ELECTROCUTION**, ensure product is properly grounded
- **READ AND SAVE THESE INSTRUCTIONS FOR LATER USE**
- **WARNING:** Risk of burns. Lamps are extremely hot when lit. Allow lamps to cool down in temperature before handling.
- **WARNING:** Risk of fire; most dwellings built before 1985 have supply wire rated at 60°C. Supply conductors (power wires) connecting the luminaire must be rated at minimum of 90°C.
- Product should be installed by an electrician and all electrical connections must be in accordance with local and National Electrical Code (NEC) standards
- Product must be mounted in locations and at heights and in a manner consistent with its intended use, in compliance with National Electrical Code and local codes and where it will not readily be subject to tampering by unauthorized personnel
- To prevent damage to the wiring, do not expose wiring to edges of sheet metal or other sharp objects
- Wear rubber soled shoes and work on a sturdy wooden or non-conductive ladder
- Double check all connections and screws, ensuring they are tight and correct
- Installing contrary to instructions may cause unsafe conditions
- If the product has any visible damage do not install it
- Call the Technical Support department at ConTech Lighting with any installation questions: 847.559.5500

INSTALLATION PROCEDURE: Prepping the Ceiling Power Feed and Supports

TABLE 1: Canopy Spacing

	PPR04	PPR08
LUMINAIRE TYPE	CANOPY SPACING	
STAND ALONE	42"	86-1/4"
START OF RUN	42"	86-1/4"
MIDDLE OF RUN	44-1/4"	88-1/2"
END OF RUN	44-1/4"	88-1/2"

1. For incoming Power/Aircraft Suspension Kit, attach Canopy Mounting Bracket to Junction Box and Threaded Rod to center of Mounting Bracket as shown in Figure A
2. Feed Power Cable from Kit through Canopy and wire according to the wiring diagram in Figure B, using approved Wire Connectors
3. Feed Aircraft Cable through Cable Coupler so grommet end sits within Coupler
4. Position Canopy over center Threaded Rod and secure in place using the Cable Coupler, being sure not to pinch any of the wires and connections in the Junction Box
5. Repeat for successive Aircraft Support Kits (sold separately) by spacing those according to the chart in Table 1, skipping Step 1 for the Aircraft Support Kits

FIGURE A

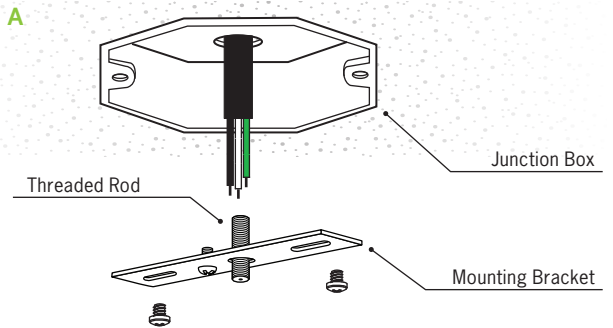
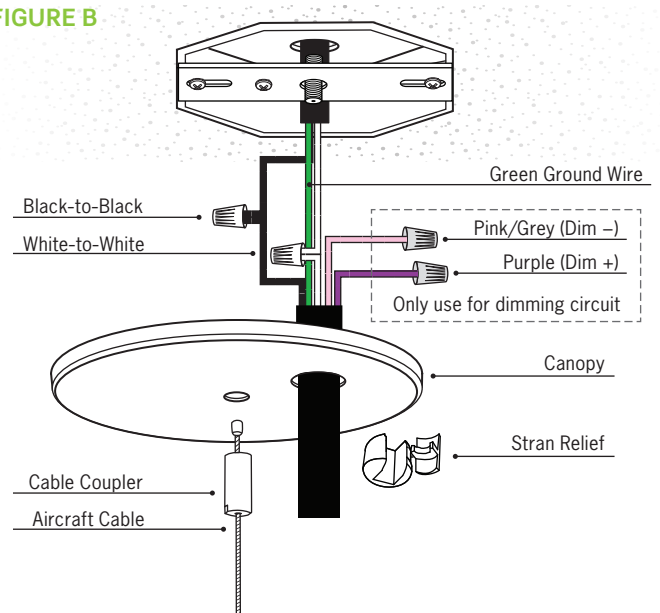


FIGURE B



CONTINUED

INSTALLATION INSTRUCTIONS | PrecedentPro PPR04/PPR08 Series Linear Suspended Luminaires

The important safeguards and instructions here are not meant to cover all possible conditions and situations that may occur.

INSTALLATION PROCEDURE: Prepping, Suspending, and Wiring Luminaires

1. On floor or table, install the Cable Grippers with 1/4-20 Threaded Rods (supplied) into the Luminaires (Figure C)
2. Hang the Start of Run or Stand-Alone Luminaire by inserting the Aircraft Cable through the Cable Grippers at the two ends (Figure D). Adjust the height and level the Unit as necessary. Cut any excess Cable as necessary or coil up and secure with Cable Ties (not provided).
3. Prep and hang successive Luminaires (Figure E); tuck the Wiring Harnesses from the previous Unit into the successive Luminaire.
NOTE: Electrical connections will be performed in Step 5. Slide units together and secure the Luminaires with two (2) screws (Figure F).
4. Repeat the process to complete the full run of Luminaires.

FIGURE C

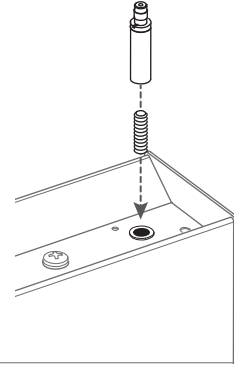


FIGURE D

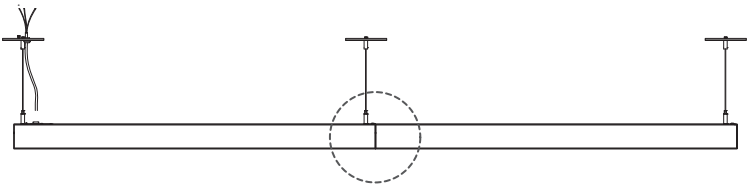
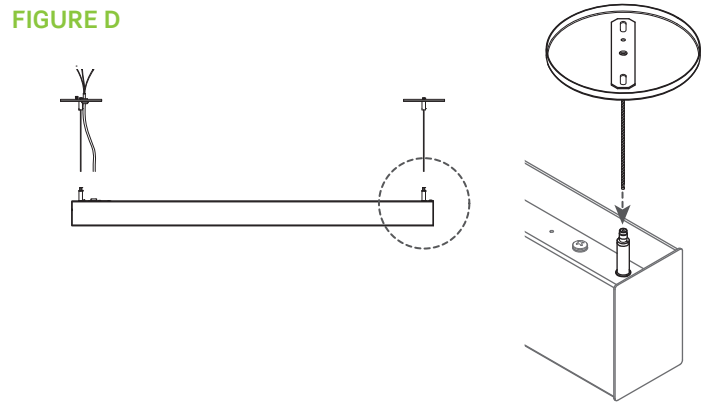
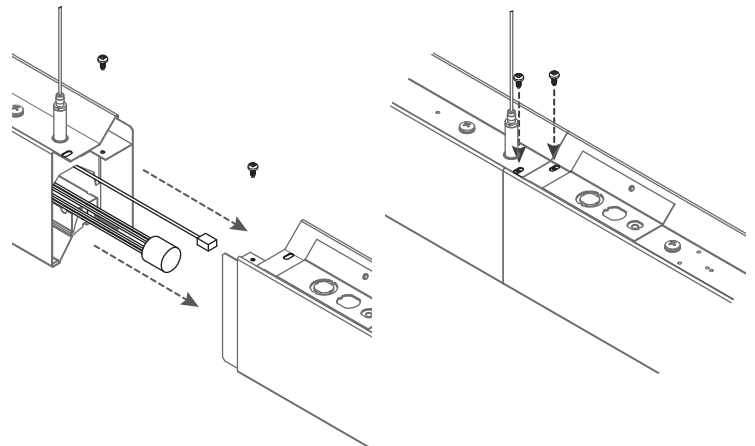


FIGURE E

FIGURE F



CONTINUED

INSTALLATION INSTRUCTIONS | PrecedentPro PPR04/PPR08 Series Linear Suspended Luminaires

The important safeguards and instructions here are not meant to cover all possible conditions and situations that may occur.

INSTALLATION PROCEDURE: Prepping, Suspending, and Wiring Luminaires

- o make electrical connections between fixtures, pull out loose ends of Wiring Harnesses (Figure G), make the connections, and tuck the Harnesses back into the units. Re-attach the Access Plates (shipped in hardware bag).
- or the Start Unit (or Stand-Alone unit) cut Power Drop Cable to the necessary length, leaving at least 6-inches for wire prep and connections. Strip each wire within the Power Drop (number of wires will vary depending upon configuration). Pull out loose ends of Wiring Harness, cut connector, and strip each wire within Harness. String Power Feed Cable through hole in Wiring Access Plate and connect the Power Feed Wires with the Leads from the Harness using approved wire connectors (Figure H). Carefully tuck the connectors and excess wire inside the luminaire channel. Position the Wiring Access Plate and re-secure with the two (2) screws.

FIGURE G

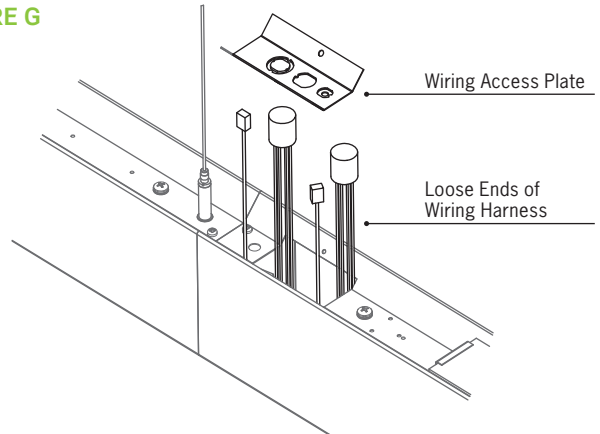
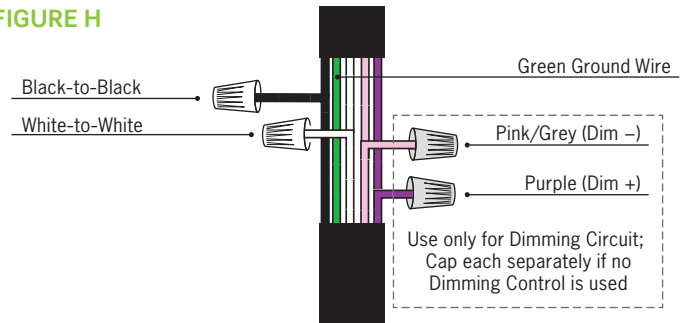


FIGURE H



FOR MAINTENANCE ONLY: To Replace Driver or LED Board on Any Unit

1. Remove two (2) Screws (A)
2. Lift and tilt the Reflector LED Assembly and let hang by Tethers (Figure I).
3. Detach LED Quick Disconnect.
4. Detach Tethers and remove Reflector LED Assembly.
5. Perform required LED Board and/or LED Driver replacement.
6. Re-attach Tethers, reconnect LED Board Assembly, re-install Reflector Assembly and re-install two (2) Screws (A)

FIGURE I

