

PLUS SERIES | P3RW 3-Inch Wall Wash Downlight

A family of Downlights, Adjustables, and Wall Wash luminaires; the PLUS Series delivering an exceptional balance of performance, quality and value.



FEATURES

- Performance:** Providing outstanding performance, the PLUS Series Wall Wash Downlights deliver up to 1900 Lumens, and efficacies up to 73 Lumens per Watt
- Visual Comfort:** TIR Wall Wash Optic provides a smooth, uniform light distribution on the wall surface
- Light Quality:** Premium quality light source: color consistency within 2 SDCM and excellent color rendering over 90 CRI
- Flexibility:** Designed as a direct install product for effortless installation; additional housing options are available to accommodate a variety of applications



P3SW DOWNLIGHT MODULE	10L	15L	20L	25L
NOMINAL LUMEN OUTPUT ¹	750Lm	1000Lm	1400Lm	1800Lm
NOMINAL WATTAGE	10W	14W	20W	28W
INPUT VOLTAGE	120V-277V/347V			
COLOR TEMPERATURE CRI	2700K/3000K/3500K/4000K 80/90+ CRI			
BEAM DISTRIBUTIONS	Wall Wash			
DRIVER DIMMING OPTIONS	Phase (Forward/Reverse), 0-10V, Lutron EcoSystem, DALI			
MOUNTING OPTIONS	Direct Mount Remodel Non-IC New Construction Frame Insulated Ceiling (IC)/StopAire™/Chicago Plenum Housing			
LISTINGS	cCSAus Certified to UL and CSA Standards; Suitable for Damp Locations ICSA Housing/Chicago Plenum Housing is CCEA Listed ICSA Housing conforms to Washington State Energy Code (WSEC) for Low Air Infiltration; tested in accordance with ASTM E283 (2.0 CFM or less)			
WARRANTY	Five (5) year replacement after date of purchase Emergency battery backup option covered by a one (1) year replacement guarantee after date of purchase			
SYSTEM RATING	50,000 Hours @ 70% Lumen Maintenance			

1. Approximate lumen output based on 3000K performance; see photometric test results for additional information

PLUS SERIES | P3RW 3-Inch Wall Wash Downlight

ORDERING INFORMATION

Example Order: P3RW-25L30KWWMVD2 / P3RTW-CLR / P3RA-NC

MODULE ORDERING INFORMATION

Series	Lumens	CCT/CRI	Beam Dist.	Electrical/Driver	Options
P3RW PLUS Series 3-Inch Round Wall Wash Downlight	10L 750Lm 15L 1000Lm 20L 1400Lm 25L² 1800Lm	80+ CRI 27K 2700K 30K 3000K 35K 3500K 40K 4000K 90+ CRI 27KC 2700K 30KC 3000K 35KC 3500K 40KC 4000K	WW Wall Wash	ALL MVD DRIVER OPTIONS ARE MULTI-VOLT: 120 - 277V MVD Phase (Forward/Reverse)/0-10V Dimming MVD2 0-10V, 1% Dimming MVD4 Lutron Hi-lume EcoSystem 1% Dimming with Soft-on, Fade-to-Black MVD6³ eldoLED ECOdrive 0-10V, 1% Dimming MVD7³ eldoLED ECOdrive DALI, 1% Dimming MVD8³ eldoLED SOLOdrive 0-10V, 0.1% Dimming MVD9³ eldoLED SOLOdrive DALI, 0.1% Dimming 34D2 347V 0-10V Dimming	No Battery Back-Up Leave Blank ER⁴ Emergency Battery Backup with Remote Test Switch

2. 25L Lumen Option (28W) is not available for use with ICSA Housings and is restricted up to the 20L option max.

3. eldoLED Drivers are programmed for Linear Curve Dimming as standard; for Logarithmic Curve Dimming, consult factory.

4. The ER Emergency Battery Backup option can be used for IC and Non-IC applications, Damp Location only.

TRIM & HOUSING ORDERING INFORMATION

Series	Trim Type	Trim Finish	Housing Type
P3RT P3 PLUS Trim	W Wall Wash	CLR Clear Specular CLRW Clear Specular with White Painted Flange PL Platinum Semi-Specular PLW Platinum Semi-Specular with White Painted Flange WHT Matte White BLK Matte Black	P3RD-NC Standard New Construction Frame: 8" X 13" P3RA-NC Large New Construction Frame: 10-1/2" x 15" P3RD-ICSA⁵ Standard Insulated Ceiling / StopAire™ / Chicago Plenum Housing: 8" X 13" P3RA-ICSA Large Insulated Ceiling / StopAire™ / Chicago Plenum Housing: 10-1/2" x 15"

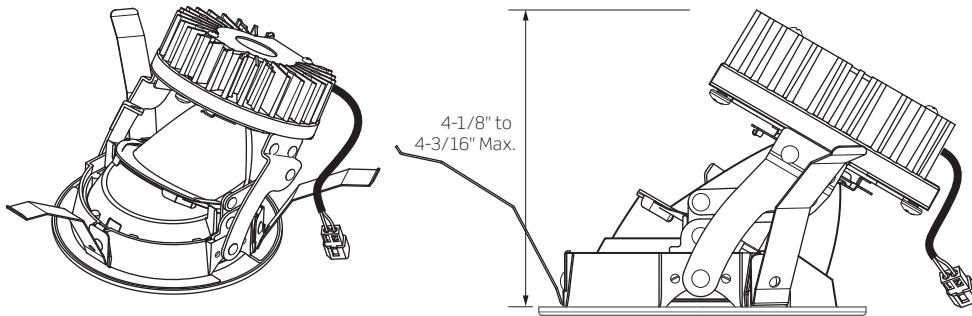
5. P3SD-ICSA Housing is not compatible with the ER option; P3SA-ICSA must be used

ACCESSORY ORDERING INFORMATION

NC Frame / ICSA Housing Accessories	
RL-KIT	Commercial Mounting Brackets
HB-24	27-Inch Flat Hanger Bars for RL-KIT
HBC-24	25-Inch C-Channel Hanger Bars for RL-KIT in Grid Ceiling Construction
HB-30	T-Bar Hanger Set

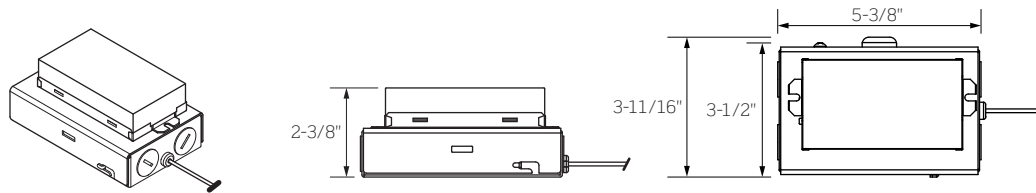
PLUS SERIES | P3RW 3-Inch Wall Wash Downlight

P3SW MODULE



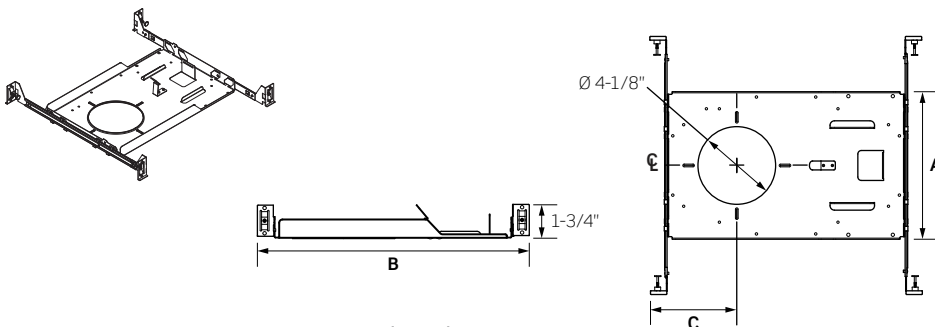
APERTURE DIAMETER	3-1/2"
REFLECTOR FLANGE DIAMETER	4-1/2"
REFLECTOR FLANGE WIDTH	1/2"
CEILING CUTOUT	4"
CEILING THICKNESS	1/2" to 1-3/8"
MODULE CABLE LENGTH	6"
JUNCTION BOX CABLE LENGTH	16"

P3 DRIVER



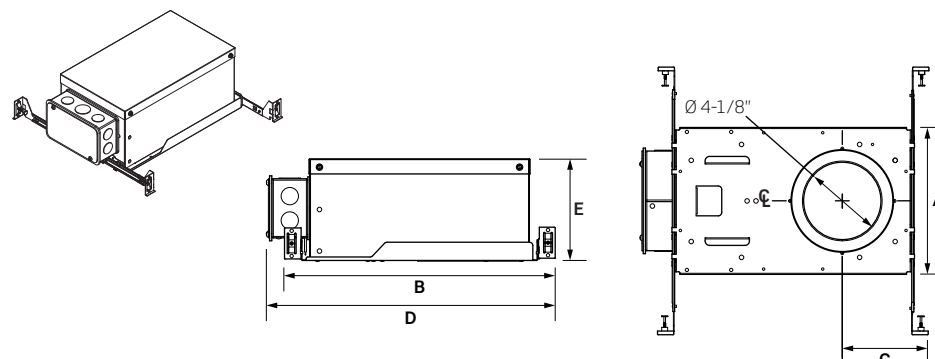
OPTIONAL P3 SQUARE DOWNLIGHT HOUSINGS

NEW CONSTRUCTION FRAME



DIMENSION	P3RD-NC	P3RA-NC
	STANDARD	LARGE
A	7-13/16"	10-1/2"
B	14-7/16"	16-1/2"
C	4-9/16"	6"

INSULATED CEILING/STOPIRE™ (ICSA)



DIMENSION	P3RD-ICSA	P3RA-ICSA
	STANDARD	LARGE
A	7-13/16"	10-1/2"
B	14-7/16"	16-1/2"
C	4-9/16"	6"
D	15-3/8"	17-7/16"
E	5-3/8"	5-3/8"

PLUS SERIES | P3RW 3-Inch Wall Wash Downlight

PRODUCT SPECIFICATIONS

LIGHT ENGINE

- 2700K, 3000K, 3500K and 4000K; 80 or 90 CRI
- Color consistency within 2 SDCM

ELECTRICAL/DRIVER

- Driver Options include Universal Voltage 120–277V; 347V optional
- Flicker free Dimming Options include 0–10V, Phase (Forward/Reverse), EldoLED (0-10V and DALI), and Lutron EcoSystem
- All Driver Options are accessible and field replaceable from below the ceiling
- Class 2 output with over-voltage, over-current and short circuit protection; >0.9 power factor.

EMERGENCY BATTERY

- 6W Emergency Battery Backup option provides illumination for a minimum duration of 90 minutes
- Certified to UL924 Standard for Emergency Lighting
- Lithium-Ion Battery with self-testing and self-diagnostics
- Available with Remote Test Switch Option
- Emergency Battery Backup is accessible from below the ceiling
- Meets Title 20 CEC (California Energy Commission) efficiency standards

OPTICS

- Wall Wash TIR Optic provides smooth, uniform light distribution

TRIMS

- Self-flanged, Spun Aluminum Angle-Cut Wall Wash Reflectors are available in various finishes: Specular and Semi-specular with and without White Painted Flanges and White and Black Painted finishes

INSTALLATION

- **CEILING OPENING:** For direct install applications, a ceiling cut-out diameter of 4-inches is required; for applications utilizing the Non-IC Mounting Frame or ICSA Housing, a ceiling cut-out diameter of 4-1/8-inches is required.
- **CEILING THICKNESS:** Accommodates ceiling thicknesses of 1/2- to 1-3/8-inches
- A Module Support Ring is provided to facilitate smooth insertion and removal of the Fixture Module
- A Safety Tether is included for additional support between the Fixture Module and Junction Box / Driver assembly

CONSTRUCTION

- General Fixture construction is designed for quick, direct install into Non-IC applications
- Optional Non-IC Mounting Frame and Insulated Ceiling / StopAire™ (ICSA) Housing available
- Non-IC Mounting Frame is available for new construction applications; includes pre-installed hanger bars and requires a minimum 3-inch clearance around fixture from insulation material
- ICSA Housing is available for new construction applications; includes pre-installed hanger bars and may be used various applications including IC (direct insulation contact), restrictive air flow, and Chicago Plenum
- Downlight Module Quick-connect design enables easy installation and removal of Universal LED Module; three (3) Spring Steel Supports secure Module into Housing/ceiling.
- LED Module Consists of a Die-Cast Aluminum Heat Sink and Die-Cast Aluminum Mounting Ring, three (3) Steel Mounting Springs ensure secure mounting
- Junction Box/Driver assembly can be easily accessed from below the ceiling; when used with optional Frame or Housing, it is secured with a positive spring latch design
- Fixture Module Junction Box includes four (4) 1/2-inch screwdriver pry-out knockouts
- ICSA Housing includes Junction Box with six (6) 1/2-inch knockouts and one (1) 3/4-inch knockout
- Approved for through circuit wiring: Max. eight (8) 12 AWG (4 in / 4 out), wiring rated to 90°C

CERTIFICATION

- cCSAus Certified to UL and CSA Standards; suitable for Damp Locations; Suitable for Wet Locations (covered ceiling) when used with Wall Wash Trim
- Emergency Battery Backup option is cCSAus certified to UL924 Standard for Emergency Lighting
- ICSA Housings meet the air leakage requirements per ASTM E283; conforms to Washington State Energy Code (WSEC) for low air Infiltration
- ICSA Housings are City of Chicago Environmental Air (CCEA) approved

PLUS SERIES | P3RW 3-Inch Wall Wash Downlight

TRIMS AND TRIM ACCESSORIES

P3RTW: Wall Wash Trims



P3RTW-CLR
Clear Specular



P3RTW-PL
Platinum Semi-Specular



P3RTW-WHT
Matte White



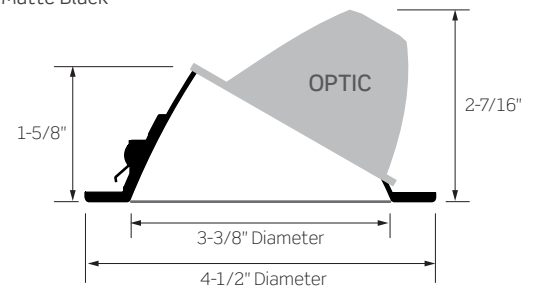
P3RTW-BLK
Matte Black



P3RTW-CLRW
Clear Specular/
White Painted Flange



P3RTW-PLW
Plat. Semi-Specular/
White Painted Flange



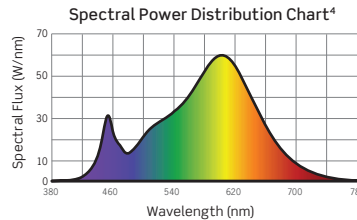
PLUS Series | P3RW 3-Inch Wall Wash Downlight Photometrics

PHOTOMETRICS

P3RW-25L30KWWMD / P3RTW-CLR: 3-Inch Wall Wash Downlight, Clear Wall Wash Reflector

LM-63 Test No. G23121501; LM-79 Test No. S23120401

Fixture Delivered Lumens: 1808.3
Total Watts@120V: 26.7
Lumens Per Watt: 67.7
Color Rendering Index (CRI)¹: 82.6
Color Temperature (CCT)²: 3099K
Designed for 50,000 Hour Lamp Life³



1. Accuracy of Rendering Colors
2. Color Appearance of Light Source
3. Dependent on Surrounding Temperatures
4. Colors Present within the Light Source

PHOTOMETRICS: FOOTCANDLES ON WALL

MOUNTED 2 FT. FROM WALL P3RW-25L30KWWMD / P3RTW-CLR: 3-Inch Wall Wash Downlight, Clear Wall Wash Reflector

Mounting Height = 10 Ft.
Room Reflectance = 80/50/20
Multiple Units = 5 UNITS
Beam Center: ↓
Center of Multiple Units:

		Single Unit						Multiple Units								
		0 FT	1 FT	2 FT	3 FT	4 FT	5 FT	2 FT ON CENTER			3 FT ON CENTER			4 FT ON CENTER		
		↓						↓		↓	↓		↓	↓		↓
Distance from Ceiling	1 FT	10	6	3	1	1	0.3	16	12	15	13	9	11	11	6	11
	2 FT	39	16	11	4	2	1	66	60	63	50	38	47	44	24	43
	3 FT	66	47	21	8	3	2	116	111	111	84	72	82	74	45	73
	4 FT	61	48	26	11	5	2	122	119	118	86	80	85	73	55	72
	5 FT	45	35	23	11	6	3	101	99	97	71	68	70	58	49	57
	6 FT	30	25	18	10	6	3	77	76	73	55	54	54	43	40	42
	7 FT	19	18	13	9	5	3	56	56	53	40	40	39	31	30	31
	8 FT	13	12	10	7	5	3	41	41	38	30	30	29	24	24	23
	9 FT	9	8	7	5	4	2	30	29	28	21	22	21	18	18	17

MOUNTED 3 FT. FROM WALL P3RW-25L30KWWMD / P3RTW-CLR: 3-Inch Wall Wash Downlight, Clear Wall Wash Reflector

Mounting Height = 10 Ft.
Room Reflectance = 80/50/20
Multiple Units = 5 UNITS
Beam Center: ↓
Center of Multiple Units:

		Single Unit						Multiple Units								
		0 FT	1 FT	2 FT	3 FT	4 FT	5 FT	2 FT ON CENTER			3 FT ON CENTER			4 FT ON CENTER		
		↓						↓		↓	↓		↓	↓		↓
Distance from Ceiling	1 FT	4	3	1	1	0.4	0.4	8	7	7	6	5	5	5	4	5
	2 FT	15	11	7	3	2	1	32	30	30	23	21	22	19	15	18
	3 FT	29	22	13	6	3	2	62	60	59	44	41	43	36	30	36
	4 FT	38	30	19	10	5	3	86	83	83	61	58	59	49	42	48
	5 FT	36	30	21	12	6	3	90	88	87	63	62	62	50	47	50
	6 FT	29	26	20	12	7	4	81	80	77	58	56	55	45	44	44
	7 FT	22	20	15	10	7	4	67	66	63	49	49	47	38	37	37
	8 FT	17	15	12	9	6	4	55	54	51	41	40	38	31	31	30
	9 FT	12	11	9	7	5	3	42	42	41	31	32	30	24	24	23

MOUNTED 4 FT. FROM WALL P3RW-25L30KWWMD / P3RTW-CLR: 3-Inch Wall Wash Downlight, Clear Wall Wash Reflector

Mounting Height = 10 Ft.
Room Reflectance = 80/50/20
Multiple Units = 5 UNITS
Beam Center: ↓
Center of Multiple Units:

		Single Unit						Multiple Units								
		0 FT	1 FT	2 FT	3 FT	4 FT	5 FT	2 FT ON CENTER			3 FT ON CENTER			4 FT ON CENTER		
		↓						↓		↓	↓		↓	↓		↓
Distance from Ceiling	1 FT	2	1	1	1	0.4	0.4	5	4	4	4	3	3	3	3	3
	2 FT	7	6	4	2	2	1	18	17	17	14	12	12	11	10	10
	3 FT	14	11	8	5	3	2	35	34	33	26	24	24	21	19	20
	4 FT	21	17	12	8	4	3	54	53	51	39	38	38	31	28	30
	5 FT	24	21	16	10	6	3	67	66	64	48	47	47	38	36	37
	6 FT	23	21	17	11	7	4	71	69	66	51	50	50	40	39	39
	7 FT	21	19	15	11	7	4	66	65	62	49	48	47	38	37	37
	8 FT	17	15	13	9	7	5	58	57	55	43	43	41	34	34	33
	9 FT	13	12	11	8	6	4	48	48	46	37	37	35	29	29	28

PHOTOMETRIC MULTIPLIERS

Lumen output values fluctuate based on Color Temperature (CCT), Color Rendering Index (CRI) and Wattage. To estimate lumen output of other combinations, multiply the published results by the following factors:

CCT MULTIPLIERS		
CCT	80+ CRI	90+ CRI
2700K	0.95	0.84
3000K	1.00	0.87
3500K	1.02	0.90
4000K	1.04	0.92

OUTPUT MULTIPLIERS			
10L SERIES	15L SERIES	20L SERIES	25L SERIES
0.41	0.56	0.76	1.00

TRIM FINISH MULTIPLIERS	
FINISH	MULTIPLIER
CLEAR (SPECULAR)	N/A
PLATINUM (SEMI-SPECULAR)	1.09
MATTE WHITE	0.98
MATTE BLACK	0.91

PLUS Series | P3RD 3-Inch Downlight Photometrics

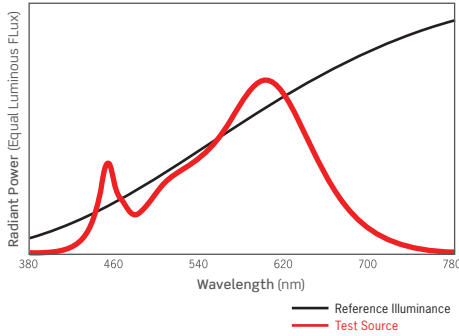
PHOTOMETRICS: TM-30 DATA

Colors are for visual orientation purposes only

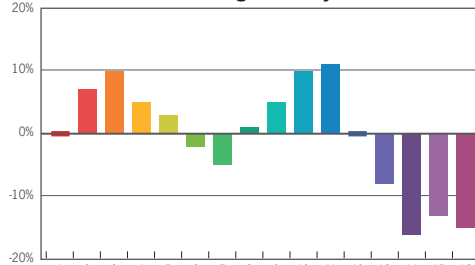
Clear Reflector, 80+ CRI

ANSI/IES TM-30-18 Color Rendition Report Test No. S23120401

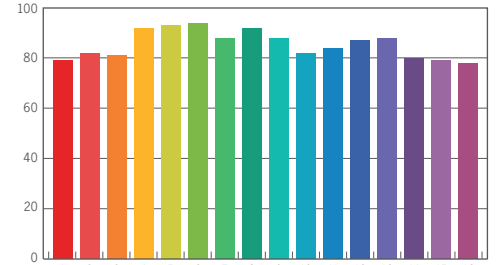
Spectral Power Distribution Comparison



Percentage Shift by Hue



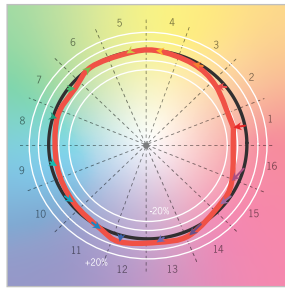
Rf by Hue



HUE BIN	1	2	3	4	5	6	7	8	9	10	11	12	13	14	15	16
HUE SHIFT	0%	7%	10%	5%	3%	-2%	-5%	1%	5%	10%	11%	0%	-8%	-16%	-13%	-15%
R _f VALUE	79	82	81	92	93	94	88	92	88	82	84	87	88	80	79	78

Color Vector Graphic

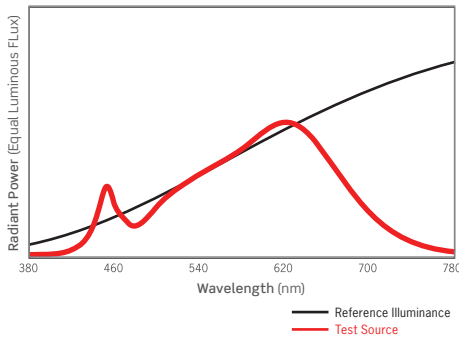
R _f	85
R _g	94
CCT(K)	3099K
D _{uv}	0.0007
u ^t	0.2470
v ^t	0.5203



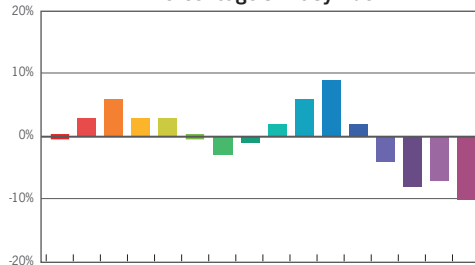
Clear Reflector, 90+ CRI

ANSI/IES TM-30-18 Color Rendition Report Test No. S23120402

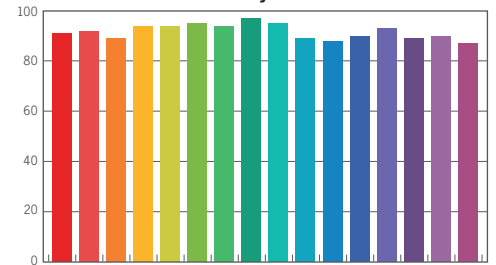
Spectral Power Distribution Comparison



Percentage Shift by Hue



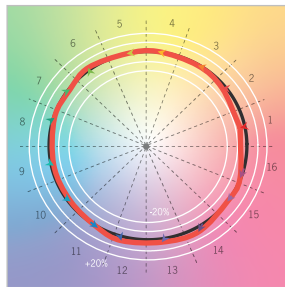
Rf by Hue



HUE BIN	1	2	3	4	5	6	7	8	9	10	11	12	13	14	15	16
HUE SHIFT	0%	3%	6%	3%	3%	0%	-3%	-1%	2%	6%	9%	2%	-4%	-8%	-7%	-10%
R _f VALUE	91	92	89	94	94	95	94	97	95	89	88	90	93	89	90	87

Color Vector Graphic

R _f	92
R _g	100
CCT(K)	3024K
D _{uv}	-0.0004
u ^t	0.2499
v ^t	0.5203



PLUS SERIES | P3R 3-Inch Round Downlight Dimming Specifications

- Incandescent 120V AC Dimmers adjust the light with Forward Phase Control, where the Dimmer “chops” the forward part of the AC Wave to deliver less or more power to the light source. No Neutral Wire Connection required.
- Electronic Low Voltage 120V AC Dimmers adjust the light with Reverse Phase Control, where the Dimmer “chops” the back part of the AC Wave to deliver less or more power to the light source. Neutral Wire Connection required.
- 0–10V DC Low Voltage Dimmers operate using two (2) Low Voltage Dimming Wires that are separate from the 120V or 277V AC Power. The Dimmer sends a Variable Output Voltage to the luminaire based upon the dimming level. 10V Corresponds to

undimmed operation, 5V to 50% and so on. Switching On/Off is controlled with the Line Voltage Power Input to the Dimmer (120V or 277V AC). Dimming operation is controlled with the 0–10V DC Low Voltage Wiring Connection between the Dimmer and the LED Driver. The Control Signal runs on two (2) low voltage control wires color coded Violet and Pink/Gray.

- Lutron EcoSystem Drivers provide continuous dimming from 1% –100%. For a complete list of compatible Dimmers and Controls, visit www.lutron.com
- Use DALI approved controls for dimming eldoLED ECOdrive, 1% Dimming (Dimming Option MVD7) and eldoLED SOLOdrive, 0.1% Dimming (Dimming Option MVD9).

MANUFACTURER	PRODUCT	MODEL	LIGHT OUTPUT			
			MVD Forward/Reverse Phase	MVD2 0-10V	MVD6 eldoLED ECOdrive: 0-10V	MVD8 eldoLED SOLOdrive: 0-10V
Leviton	Decora Slide	DSL06	10% - 100%	N/A	N/A	N/A
Leviton	SureSlide	06674	10% - 100%	N/A	N/A	N/A
Leviton	SureSlide	667	10% - 100%	N/A	N/A	N/A
Leviton	SureSlide	66DF	10% - 100%	N/A	N/A	N/A
Leviton	IllumaTech	IPL06	10% - 100%	N/A	N/A	N/A
Leviton	IllumaTech	IPE04	10% - 100%	N/A	N/A	N/A
Leviton	Decora Digital	DDE06	10% - 100%	N/A	N/A	N/A
Leviton	Decora Digital	DDL06-1L	10% - 100%	N/A	N/A	N/A
Leviton	Decora Digital	DDL06-BL	10% - 100%	N/A	N/A	N/A
Leviton	Decora Digital	DDM06	10% - 100%	N/A	N/A	N/A
Leviton	Decora Digital	DDMX1	10% - 100%	N/A	N/A	N/A
Leviton	Decora Slide	DSE06	10% - 100%	N/A	N/A	N/A
Leviton	Decora Slide	DSM10	10% - 100%	N/A	N/A	N/A
Leviton	Decora Smart Wi-Fi	D26HD	10% - 100%	N/A	N/A	N/A
Leviton	Decora Smart Wi-Fi	DN6HD	10% - 100%	N/A	N/A	N/A
Leviton	Decora Smart Wi-Fi	D2MSD	10% - 100%	N/A	N/A	N/A
Leviton	Trimatron Rotary	RDL06	10% - 100%	N/A	N/A	N/A
Leviton	Trimatron Rotary	RNL06	10% - 100%	N/A	N/A	N/A
Leviton	Toggle Slide	TSL06	10% - 100%	N/A	N/A	N/A
Leviton	Toggle Slide	TSM10	10% - 100%	N/A	N/A	N/A
Cooper	Devine	DLC03P	1% - 100%	N/A	N/A	N/A
Cooper	Skye	SLC03P	0% - 100%	N/A	N/A	N/A
Cooper	Decorator	DAL06P	0% - 100%	N/A	N/A	N/A
Pass & Seymour	Titan	CD4FB-W	N/A	1% - 100%	1% - 100%	0.1% - 100%
Synergy	ISD Series	ISD BC	N/A	1% - 100%	1% - 100%	0.1% - 100%
Watt Stopper	Miro Decorator	DCLV1	N/A	1% - 100%	1% - 100%	0.1% - 100%
Lutron	Ariadni	TGCL-153P	1% - 100%	N/A	N/A	N/A
Lutron	Ariadni	TG-600P	13% - 100%	N/A	N/A	N/A
Lutron	Diva	DVCL-153P	1% - 100%	N/A	N/A	N/A
Lutron	Diva	DV600P	6% - 100%	N/A	N/A	N/A
Lutron	Diva	DVELV303P	6% - 100%	N/A	N/A	N/A
Lutron	Diva	DVTV	N/A	1% - 100%	1% - 100%	0.1% - 100%
Lutron	Faetra	FAELV500	12% - 100%	N/A	N/A	N/A
Lutron	Lumea	LG600P	8% - 100%	N/A	N/A	N/A
Lutron	Maestro	MAELV600	16% - 100%	N/A	N/A	N/A
Lutron	Nova	NFTV	N/A	1% - 100%	1% - 100%	0.1% - 100%
Lutron	Nova T	NTFTV	N/A	1% - 100%	1% - 100%	0.1% - 100%
Lutron	Skylark	S-603PG	5% - 96%	N/A	N/A	N/A
Lutron	Skylark	S600P	5% - 100%	N/A	N/A	N/A
Lutron	Skylark	SELV300P	10% - 100%	N/A	N/A	N/A
Lutron	Skylark	CT103P	9% - 100%	N/A	N/A	N/A

NOTES

- Testing was performed with a single luminaire connected to Dimmer.
- Testing has been performed on these Dimmers, but this does not imply any warranty of compatibility.
- Dimming performance can be influenced by different Loads, as well as variations in Dimmer Switches within the same Model.
- Dimmer Maximum Load Rating with LEDs may differ from published Traditional Source Dimmer Ratings. Consult manufacturer for maximum Dimmer information.
- Consult factory for additional dimming information.