

DATE

PROJECT

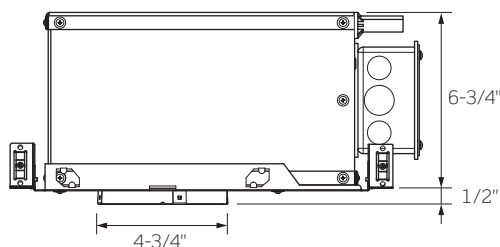
TYPE

# R4IC KB SERIES | 4-Inch Insulated Ceiling (IC)/StopAire™ Housing with BIOS SkyBlue™ Technology

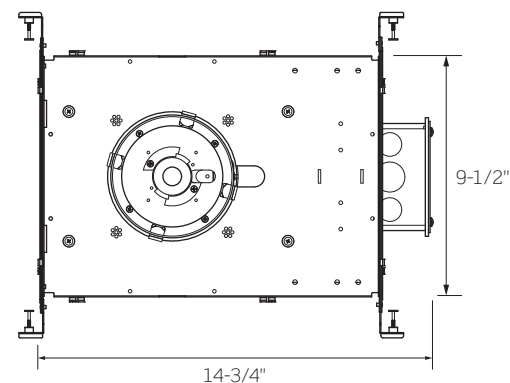


**Ceiling Opening:** 4-7/8"  
**Ceiling Thickness:** 1/2" - 1-1/2"

Side View



Bottom View



	R4SA1	R4SA2	R4SA3	R4SA4
WATTAGE	12W	15W	21W	30W
LUMEN OUTPUT <sup>1</sup>	700Lm	900Lm	1300Lm	1800Lm
COLOR TEMPERATURE / CRI / R9	3000K / 81 CRI / 90 R9 3500K / 83 CRI / 95 R9 4000K / 83 CRI / 95 R9			
INPUT WATTAGE	12W	16W	21W	30W
INPUT CURRENT (A) 120V/277V/347V	.08/.04/.03	.12/.06/.04	.17/.08/.06	.23/.11/.08
INPUT VOLTAGE	120V - 277V Standard Driver 90-305V AC, 50/60Hz 347V Standard Driver 347V AC, 50/60Hz Lutron Eco-System® Driver 120VAC / 277VAC , 50/60Hz eldoLED ECOdrive / SOLOdrive 120VAC / 277VAC , 50/60Hz			
DRIVER POWER FACTOR	> 0.90			
TOTAL HARMONIC DISTORTION (THD)	< 20%			
LISTINGS	cCSAus Certified to UL Standards; Suitable for Damp Locations Conforms to Washington State Energy Code (WSEC) for Low Air Infiltration; tested in accordance with ASTM E283 (2.0 CRM or less)			
WARRANTY	Five (5) year replacement after date of purchase			
SYSTEM RATING	50,000 Hours @ 70% Lumen Maintenance			

1. Approximate lumen output based on 3000K performance; see photometric test results for additional information

DATE	PROJECT	TYPE
------	---------	------

# R4IC KB SERIES | 4-Inch Insulated Ceiling (IC)/StopAire™ Housing with BIOS SkyBlue™ Technology

## ORDERING INFORMATION

Example Order:

Housing/LED Series	Color Temp	Dimming	BIOS Protocol
<b>R4IC1</b> - 12W/700lm	<b>30KB</b> - 3000K	<b>MVD<sup>2</sup></b> - 120 - 277V TRIAC/ELV/0 - 10V	<b>BT</b> - BIOS Tunable Dimming
<b>R4IC2</b> - 15W/900lm	<b>35KB</b> - 3500K	<b>34D2</b> - 347V 0 - 10V Dimming	<b>BS</b> - BIOS Static Dimming
<b>R4IC3</b> - 21W/1300lm	<b>40KB</b> - 4000K	<b>MVD4</b> - Lutron Hi-lume 1% EcoSystem with Soft-on, Fade-to-Black	
<b>R4IC4</b> - 30W/1800lm		<b>MVD6<sup>2</sup></b> - 120 - 277V eldoLED ECOdrive 0 - 10V, 1% Dimming	
		<b>MVD7<sup>2</sup></b> - 120 - 277V eldoLED ECOdrive DALI, 1% Dimming	
		<b>MVD8<sup>2</sup></b> - 120 - 277V eldoLED SOLOdrive 0 - 10V, 0.1% Dimming	
		<b>MVD9<sup>2</sup></b> - 120 - 277V eldoLED SOLOdrive DALI, 0.1% Dimming	

1. TRIAC and ELV Dimming for 120V only
2. eldoLED Drivers are programmed for Linear Curve Dimming as standard; for Logarithmic Curve Dimming, consult factory

**Accessories**  
Standard Hanger Bars Supplied with Housing  
**HB-30** - T-Bar Hanger Set

See "Trims for 4-Inch BIOS Downlights" Specification Sheet for compatible Trim information and details

DATE

PROJECT

TYPE

# R4IC KB SERIES | 4-Inch Insulated Ceiling (IC)/StopAire™ Housing with BIOS SkyBlue™ Technology

## PRODUCT DETAILS

### Construction

- 4-Inch Specification Grade 16 Gauge Galvanized Steel Insulated Ceiling (IC)/StopAire™ Housing with Die-Cast Aluminum Heat Sink
- For use in applications with direct contact with insulation materials
- Quick Connect Light Engine; Drivers are fully accessible from below the ceiling
- Dual Nailer Hanger Bars are adjustable for 16- and 24-inch center joists (14-1/4 to 24-1/2 inch). Nailer Bars may be extended to rest on T-Bar ceilings; optional clip-on T-Bar Hangers available.
- Pre-wired Junction Box with eight (8) 1/2-inch Knockouts
- Output over-voltage, over-current and short circuit protection
- Approved for Through Circuit Wiring: max. eight (8) 12 AWG (4in/4out), wiring rated to 90°C

### Performance Summary

- All R4 Downlights are available for non-dimming and dimming applications; for compatible Dimmers, refer to the Dimming Specification Sheet
- Flanged or Trimless Specification Grade Trims; See “Trims for 4-Inch BIOS LED Recessed Downlights” Specification Sheet for compatible trim information and details
- Trimless options require use of a Mud Frame (MF4, ordered separately) for securing housing and trim in 1/2- to 1-inch thick ceilings only
- Trimless options cannot be used with Remodel Housings (R4RM) or Slope Ceiling Adapters (RSA4L Series)
- UL8750 and Class 2 Compliant; RoHS Compliant, US only

## BIOS SKYBLUE LED TECHNOLOGY DETAILS

- BIOS SkyBlue™ Circadian Lighting Technology brings the benefits of blue skies inside by emulating the makeup of nature’s light spectrum.
- Light sends signals to the body that create biological responses, many associated with the body’s circadian system. These responses impact mood, hormone production, energy levels, alertness, fatigue and more.
- This biological response to light can be measured by the melanopic (non-visual) to photopic (visible) ratio called the M/P ratio. During the day, a high M/P ratio is optimal, while at night a low M/P ratio is best.
- BIOS LEDs provide high daytime stimulus by pin-pointing the peak sensitivity of the “sky blue” visible light spectrum wavelengths, approx. 490nm, needed to effectively communicate and trigger circadian response.

			MELANOPIC RATIO (M/P) <sup>1</sup>	
CCT	CRI	R9	DAY	NIGHT <sup>2</sup>
3000K	81	90	0.74	0.47
3500K	83	95	0.83	0.47
4000K	83	95	0.92	0.47

1. The Melanopic Ratios (M/P) provided have been calculated using the WELL v2 Methodology  
 2. 2700K CCT with SkyBlue (490nm) removed during Nighttime. Available only for Tunable BioDimming™, not available for Static BioDimming™

## BIOS BIO-DIMMING™

The BIOS Bio-Dimming Modules deliver a completely customizable and spectrally-modulated light source. Two Modules are available, Tunable or Static, depending on desired performance, and can be used with any standard dimming interface.

**Tunable Bio-Dimming™** is best suited for 24-hour facilities or evening applications, where full light output is desired as the day progresses, but also there is also the need to minimize circadian impact in the evening.

When dimming, the sky blue wavelengths are removed first, resulting in a modest color temperature shift to 2700K. This occurs within the first 20% of the dimming profile, the remainder of the dimming profile reduces light output, providing a standard linear reduction of the sky blue depleted spectrum.

**Static Bio-Dimming™** supports proper daytime circadian stimulus, best suited for day-only applications.

A steady, invisible, sky blue signal boost to white light is delivered throughout the day for high daytime circadian stimulus. When dimming, these sky blue wavelengths remain as overall light intensity is dimmed down.

TUNABLE BIO-DIMMING PROTOCOL			
DIMMER LEVEL	CCT	SKYBLUE %	LIGHT OUTPUT
100%	Initial CCT 3000K/3500K/4000K	100%	100%
99% - 81%	Gradual Shift down to 2700K	100% - 0%	100%
80%	2700K	0% No SkyBlue Wavelengths	100%
79% - 0%	2700K	0% No SkyBlue Wavelengths	Linear Dimming

STATIC BIO-DIMMING PROTOCOL			
DIMMER LEVEL	CCT	SKYBLUE %	LIGHT OUTPUT
100%	Initial CCT 3000K/3500K/4000K	100%	100%
99% - 0%	Initial CCT 3000K/3500K/4000K	100%	Linear Dimming

DATE

PROJECT

TYPE

# R4 KB SERIES | 4-Inch Downlights with BIOS SkyBlue™ Technology Photometrics

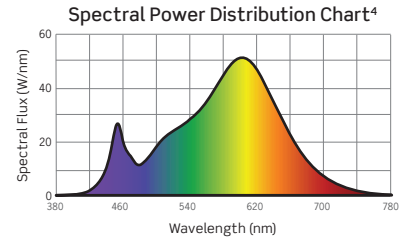
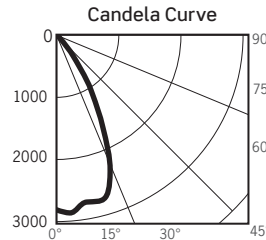
## PHOTOMETRICS

### R4\*535KB12DBS / C4322M-CLR: 4-Inch Downlight, Medium Beam, Clear Reflector

LM-63 Test No. G21092801: LM-79 Test No. S21093002

Fixture Delivered Lumens: 2240.8  
 Total Watts@120V: 38.5  
 Lumens Per Watt: 58.2  
 Center Beam Candle Power: 2841  
 Beam Distribution: 54.7°  
 Spacing Criterion: 0.84  
 Color Rendering Index (CRI)1: 84.8  
 Color Temperature (CCT)2: 3241K  
 Peak Sensitivity: 490nm  
 R9 Value: 93.2  
 Designed for 50,000 Hour Lamp Life<sup>3</sup>

DISTANCE (FT.)	FOOTCANDLES (FC)	BEAM DIA. (FT.)
6 FT	78.9	6.2
8 FT	44.4	8.3
10 FT	28.4	10.3
12 FT	19.7	12.4
14 FT	14.5	14.5
16 FT	11.1	16.5

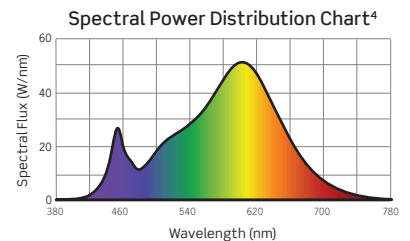
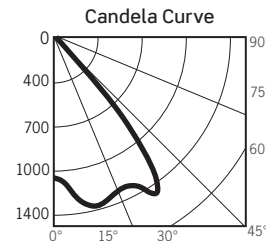


### R4\*535KB12DBS / C4322W-CLR: 4-Inch Downlight, Wide Beam, Clear Reflector

LM-63 Test No. G21092802: LM-79 Test No. S21093002

Fixture Delivered Lumens: 2259.6  
 Total Watts@120V: 38.5  
 Lumens Per Watt: 58.7  
 Center Beam Candle Power: 1118  
 Beam Distribution: 82.0°  
 Spacing Criterion: 1.25  
 Color Rendering Index (CRI)1: 84.8  
 Color Temperature (CCT)2: 3241K  
 Peak Sensitivity: 490nm  
 R9 Value: 93.2  
 Designed for 50,000 Hour Lamp Life<sup>3</sup>

DISTANCE (FT.)	FOOTCANDLES (FC)	BEAM DIA. (FT.)
6 FT	31.1	10.4
8 FT	17.5	13.9
10 FT	11.2	17.4
12 FT	7.8	20.9
14 FT	5.7	24.3
16 FT	4.4	27.8

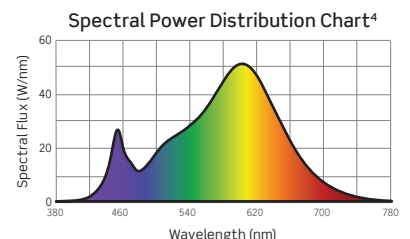
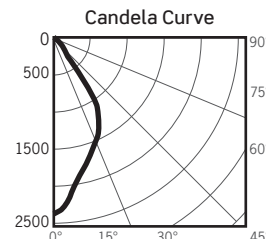


### R4\*535KB12DBS / C4322-PL: 4-Inch Downlight, Platinum Reflector

LM-63 Test No. G21092803: LM-79 Test No. S21093002

Fixture Delivered Lumens: 2006.3  
 Total Watts@120V: 38.5  
 Lumens Per Watt: 52.1  
 Center Beam Candle Power: 2371  
 Beam Distribution: 62.1°  
 Spacing Criterion: 0.92  
 Color Rendering Index (CRI)1: 84.8  
 Color Temperature (CCT)2: 3241K  
 Peak Sensitivity: 490nm  
 R9 Value: 93.2  
 Designed for 50,000 Hour Lamp Life<sup>3</sup>

DISTANCE (FT.)	FOOTCANDLES (FC)	BEAM DIA. (FT.)
6 FT	65.8	7.2
8 FT	37.0	9.6
10 FT	23.7	12.0
12 FT	16.5	14.4
14 FT	12.1	16.8
16 FT	9.3	19.2



1. Accuracy of Rendering Colors 2. Color Appearance of Light Source 3. Dependent on Surrounding Temperatures 4. Colors Present within the Light Source

## PHOTOMETRIC MULTIPLIERS

Lumen output values fluctuate based on Color Temperature (CCT), Color Rendering Index (CRI) and Wattage. To estimate lumen output of other combinations, multiply the published results by the following factors:

CCT	STANDARD CRI
3000K	0.95
3500K	N/A
4000K	1.05

SERIES 1	SERIES 2	SERIES 3	SERIES 4
0.31	0.43	0.61	0.81

C4322W-CLR	C4322-PL	C4322-WHT	C4322DF-SL	C4323-CLR
1.01	0.90	0.92	0.67	0.51

DATE

PROJECT

TYPE

# R4 KB SERIES | 4-Inch Downlights with BIOS SkyBlue™ Technology Photometrics

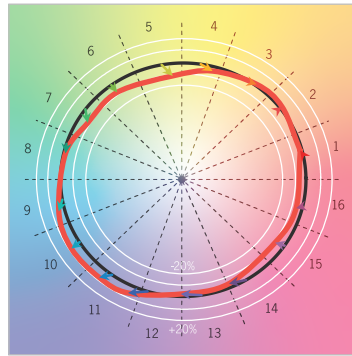
## PHOTOMETRICS: TM-30 DATA

**R4\*535KB12DBS / C4322M-CLR**

ANSI/IES TM-30-18 Color Rendition Report Test No. S21093002

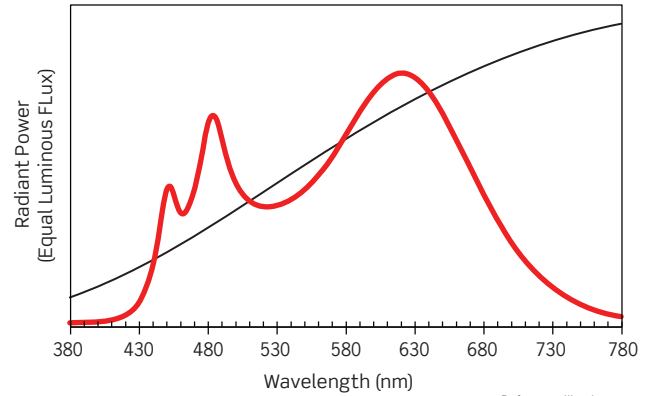
$R_f$	86
$R_g$	96
CCT(K)	3241K
$D_{uv}$	-0.0098
$u^l$	0.2468
$v^l$	0.5032

Color Vector Graphic

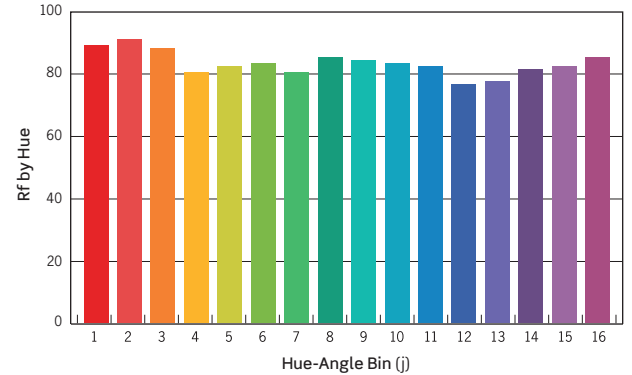
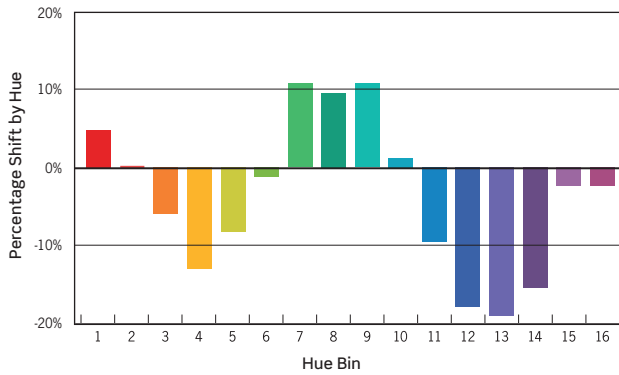


— Reference Illuminance  
— Test Source

Spectral Power Distribution Comparison



— Reference Illuminance  
— Test Source



HUE BIN	1	2	3	4	5	6	7	8	9	10	11	12	13	14	15	16
HUE SHIFT	4%	0%	-5%	-11%	-7%	-1%	9%	8%	9%	1%	-8%	-15%	-16%	-13%	-2%	-2%
R <sub>f</sub> VALUE	91	93	90	82	84	85	82	87	86	85	84	78	79	83	84	87

Colors are for visual orientation purposes only

DATE	PROJECT	TYPE
------	---------	------

# R4 KB SERIES | Trims for 4-Inch LED Downlights with BIOS SkyBlue™ Technology

## FLANGED TRIM OPTIONS



**C4321-WHT-PL**  
White Reflector/Platinum Lower Cone



**C4321 Cone Series**  
*Two Piece Reflector:  
Lower Cone and Flat Lens*

3-7/8-Inch ID; 5-11/16-Inch OD. 3-1/8-Inch H

Two Piece Reflector: Upper Reflector with Lower Cone. Includes one (1) LF20-CL Clear Glass Lens. Approved for Wet Locations when Glass Lens is installed.



**C4321-WHT-B**  
White Reflector/Black Baffle



**C4321 Baffle Series**  
*Two Piece Reflector:  
Lower Baffle and Flat Lens*

3-7/8-Inch ID; 5-11/16-Inch OD. 3-1/8-Inch H

Two Piece Reflector: Upper Reflector with Lower Baffle. Includes one (1) LF20-CL Clear Glass Lens. Approved for Wet Locations when Glass Lens is installed.

Reflector  
**C4321-CLR** - Clear  
**C4321-WHT** - White

Lower Cone  
**CLR** - Clear  
**PL** - Platinum

Reflector  
**C4321-CLR** - Clear  
**C4321-WHT** - White

Lower Baffle  
**B** - Black  
**P** - White



**C4327-CLR-PL**  
Clear Reflector/Platinum Lower Cone/  
Regressed Prismatic Convex Lens



**C4327 Cone Series**  
*Two Piece Reflector: Lower Cone  
with Prismatic Convex Lens*

3-7/8-Inch ID; 5-11/16-Inch OD. 3-1/8-Inch H

Two Piece Reflector with Lens: Upper Reflector with Lower Cone and Prismatic Convex Lens. Lens has 1-1/2-inch regress. Wet Location Listed.



**C4327-CLR-P**  
Clear Reflector/White Lower Baffle/  
Regressed Prismatic Convex Lens



**C4327 Baffle Series**  
*Two Piece Reflector: Lower Baffle  
with Prismatic Convex Lens*

3-7/8-Inch ID; 5-11/16-Inch OD. 3-1/8-Inch H

Two Piece Reflector with Lens: Upper Reflector with Lower Baffle and Regressed Prismatic Convex Lens. Lens has 1-1/2-inch regress. Wet Location Listed.

Reflector  
**C4327-CLR** - Clear  
**C4327-WHT** - White

Lower Cone  
**CLR** - Clear  
**PL** - Platinum

Reflector  
**C4327-CLR** - Clear  
**C4327-WHT** - White

Lower Baffle  
**B** - Black  
**P** - White



**C4322-PL**  
Platinum Reflector



**C4322 Series**  
*Specification Grade Reflector*  
4-3/8-Inch ID, 5-11/16-Inch OD,  
3-1/8-Inch Height

Specification Grade Reflector. For Wet Location approved trim, add “-C” for Clear Lens or “-SL” for Sandblast Lens after finish code.



**C4322DF-SL**  
Satin Silver Painted Reflector



**C4322DF Series**  
*ISOWET Dead Front Reflector Trim*  
4-3/8-Inch ID, 5-11/16-Inch OD,  
3-1/8-Inch Height

Isolated, Wet Location approved Thermoplastic Reflector with Clear Glass Lens deeply regressed inside top of Reflector.

- C4322N-CLR\*** - 35° Narrow Beam Clear Specular Reflector
- C4322M-CLR\*** - 51° Medium Beam Clear Specular Reflector
- C4322W-CLR\*** - 80° Wide Beam Clear Specular Reflector
- C4322-PL\*** - 59° Platinum Reflector
- C4322-PLWHE** - 59° Platinum Wheat Reflector
- C4322-WHT** - 70° White Reflector

\*Available with White Painted Flange, add “-WPF” to end of part number

- C4322DF-SL\*** - Satin Silver Paint
- C4322DF-WHT** - Matte White Paint

\*Available with White Painted Flange, add “-WPF” to end of part number

DATE

PROJECT

TYPE

# R4 KB SERIES | Trims for 4-Inch LED Downlights with BIOS SkyBlue™ Technology

## FLANGED TRIM OPTIONS, CONTINUED



**C4323-CLR**  
Clear Reflector

**C4323 Series**  
Lensed Wall Wash Reflector Trim  
4-Inch ID; 5-11/16-Inch OD



**CTR4325L-WHT-P**  
Floating Glass Disc White Reflector



**CTR4326L-CLR-P**  
Floating Glass Ring Clear Reflector

- C4323-CLR\*** - Clear Reflector
- C4323-PL\*** - Platinum Reflector
- C4323-WHT** - White Reflector

\*Available with White Painted Flange, add "-WPF" to end of part number

**CTR432\*L Series**  
Floating Glass Reflector  
4-3/8-Inch ID; 6-Inch OD

White Reflector with Floating Glass Disc, Clear Reflector with Floating Glass Ring; 1-1/4-inch drop from ceiling. Glass Ring has 3-1/2-inch center hole.

- CTR4325L-WHT-P** - Floating Glass Disc/White Reflector
- CTR4326L-CLR-P** - Floating Glass Ring/Clear Reflector

## TRIMLESS OPTIONS

Trimless Options require use of Mud Frame accessory (MF4, ordered separately)



**CN4322 \*-CLR**  
Specular Clear Reflector  
Multiple Beam Spreads



**CN4322 Series**  
Specification Grade  
Trimless Reflector

4-3/8-Inch ID; 4-3/4-Inch OD. 4-3/8-Inch H  
Specification Grade Specular Reflector.  
**Trim cannot be used on Remodel Housings (R4RM) or with Slope Ceiling Adapters (RSA4L). For use with 1/2- to 1-inch ceiling thicknesses only.** For Wet Location approved trim, add "-C" for Clear Lens or "-SL" for Sandblast Lens after finish code.



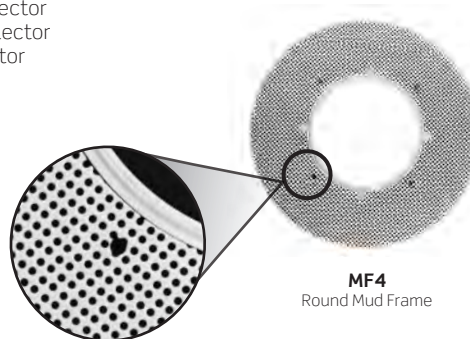
**CN4323-PL**  
Platinum Reflector

**CN4323 Series**  
Trimless Lensed Wall Wash Reflector Trim  
4-Inch ID; 4-3/4-Inch OD

**Trim cannot be used on Remodel Housings (R4RM) or with Slope Ceiling Adapters (RSA4L). For use with 1/2- to 1-inch ceiling thicknesses only.**

- CN4323-CLR** - Clear Reflector
- CN4323-PL** - Platinum Reflector
- CN4323-WHT** - White Reflector

- CN4322N-CLR** - 35° Narrow Beam Clear Specular Reflector
- CN4322M-CLR** - 51° Medium Beam Clear Specular Reflector
- CN4322W-CLR** - 80° Wide Beam Clear Specular Reflector
- CN4322-PL** - 59° Platinum Reflector
- CN4322-WHT** - 70° White Reflector



**MF4**  
Round Mud Frame

**MF4 Series**  
Round Mud Frame  
10-Inch OD

**Required for use with trimless options.** Die-cast Ring with Steel Mesh Frame. Painted white.

- MF4** - 4-Inch Mud Frame

DATE

PROJECT

TYPE



# R4 and R6 LED Downlights with BIOS SkyBlue™ Circadian Lighting Technology

## PRODUCT DETAILS

### Dynamic 24-Hour Lighting Solutions to Regulate Circadian Systems and Create Healthier Spaces

BIOS SkyBlue™ Circadian Lighting Technology brings the benefits of blue skies inside by emulating the makeup of nature’s light spectrum.

Light sends signals to the body that create biological responses, many associated with the body’s internal 24-hour clock, or circadian system. These signals can impact mood, hormone production, energy levels, alertness, fatigue and more.

BIOS LEDs are expertly designed to generate psychological and biological responses, offering the most comprehensive approach to wellness lighting. BIOS LEDs provide high daytime stimulus by pin-pointing the peak sensitivity of the ‘sky blue’ visible light spectrum wavelengths, approx. 490nm, needed to effectively communicate and trigger circadian response.

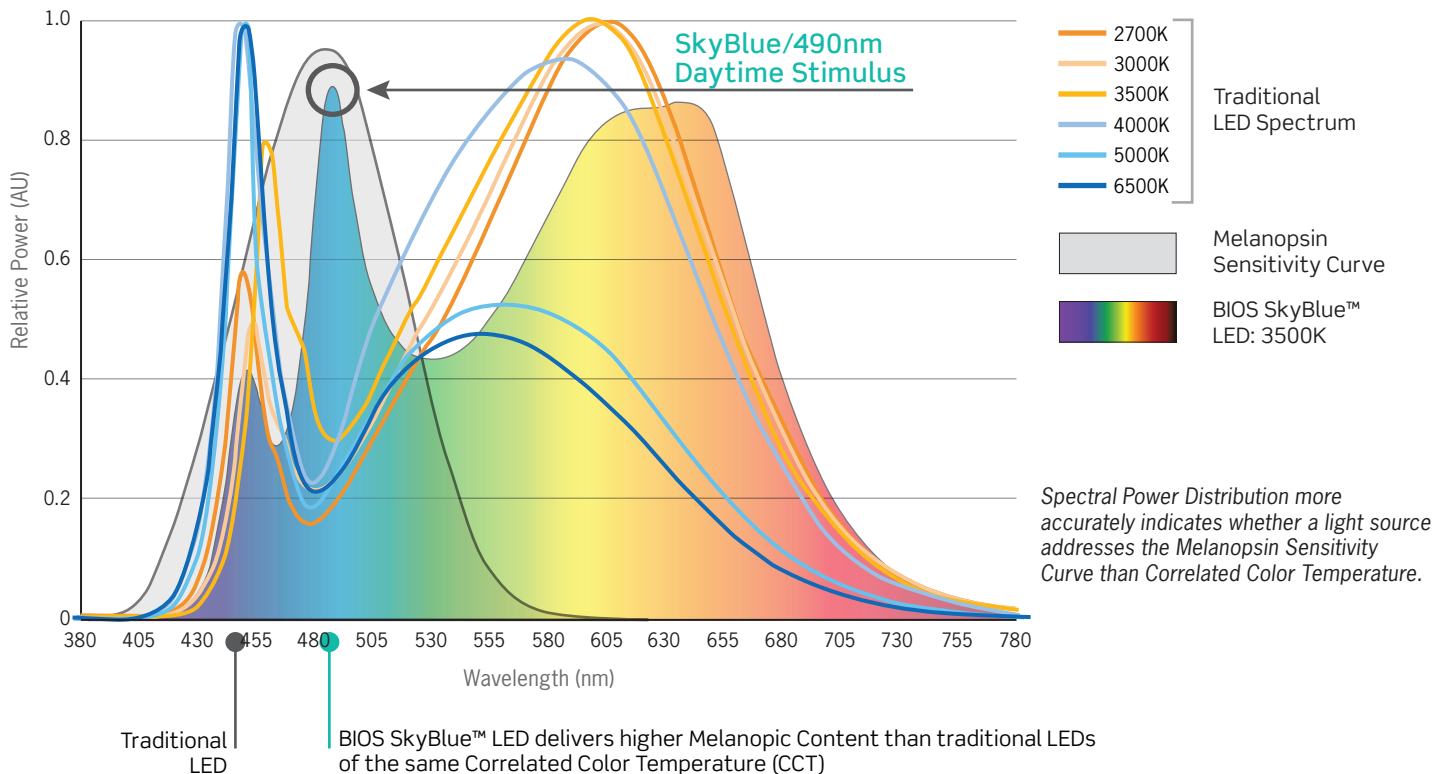
### BIOLOGICAL BENEFITS

- Strengthens Your Circadian Rhythm
- Increases Alertness
- Enhances Productivity
- Boosts Mood
- Promotes a Better Night Sleep

## PERFORMANCE COMPARISONS

### Spectral Power Composition and M/P Ratios: BIOS SkyBlue™ LED Compared to Traditional LEDs

The body’s biological response to light can be measured by the melanopic (non-visual) to photopic (visible light) ratio called the M/P ratio. During the day, a high M/P ratio is optimal, while at night a low M/P ratio is best.



For additional information, visit [www.bioslighting.com](http://www.bioslighting.com)



DATE

PROJECT

TYPE



# R4 and R6 LED Downlights with BIOS SkyBlue™ Circadian Lighting Technology

## CIRCADIAN LIGHTING SOLUTIONS: TUNABLE AND STATIC BIO-DIMMING™ MODULES



### Tunable Bio-Dimming™ Module

- Senior Living
- Hospitality
- Factories
- Residential
- Neonatal Intensive Care Unit/NICU

BIOS SkyBlue **Tunable** Bio-Dimming is best suited for 24-hour facilities or evening applications, where full light output is desired as the day progresses, but also a need to minimize circadian impact in the evening.

When dimming, the sky blue wavelengths are removed first, resulting in a modest color temperature shift to 2700K. This provides both psychological and biological benefits without a harsh change in CCT. This shift occurs within the first 20% of the dimming profile.

In the remaining 80% of the dimming profile, light output is reduced, enabling a standard linear reduction of the sky blue depleted spectrum.

Tunable Bio-Dimming adds the ability to fine-tune and dim-down the sky blue signal as desired, calibrate light levels and regulate spectral changes.

Compatible with all standard dimming and control protocols, making installation easy and inexpensive.

### Static Bio-Dimming™ Module

- Schools
- Sports Facilities
- Offices
- Retail
- Healthcare Facilities
- Outpatient Clinics
- Factories

BIOS SkyBlue **Static** Bio-Dimming supports proper daytime circadian stimulus, best suited for day-only applications.

- Color of light remains constant throughout the day:
  - 490nm 'Blue Boost' does not reduce during the day
  - Apparent CCT of 3000K, 3500K or 4000K remains constant
- High Melanopic to Photopic (m/p) ratio:
  - While m/p ratio will remain constant if light level is dimmed, EML (Equivalent Melanopic Lux) and CS (Circadian Stimulus) values will be affected due to reduced vertical illuminance

A steady, but invisible, sky blue signal boost to white light is delivered throughout the day for high daytime circadian stimulus. When dimming, these sky blue wavelengths remain as overall light intensity is dimmed down.

Compatible with all standard dimming and control protocols, making installation easy and inexpensive.

## BIO-DIMMING™ PROTOCOLS

TUNABLE BIO-DIMMING PROTOCOL			
DIMMER LEVEL	CCT	SKYBLUE %	LIGHT OUTPUT
100%	Initial CCT 3000K/3500K/4000K	100%	100%
99% - 81%	Gradual Shift down to 2700K	100% - 0%	100%
80%	2700K	0% No SkyBlue Wavelengths	100%
79% - 0%	2700K	0% No SkyBlue Wavelengths	Linear Dimming

STATIC BIO-DIMMING PROTOCOL			
DIMMER LEVEL	CCT	SKYBLUE %	LIGHT OUTPUT
100%	Initial CCT 3000K/3500K/4000K	100%	100%
99% - 0%	Initial CCT 3000K/3500K/4000K	100%	Linear Dimming

For additional information, visit [www.bioslighting.com](http://www.bioslighting.com)

DATE

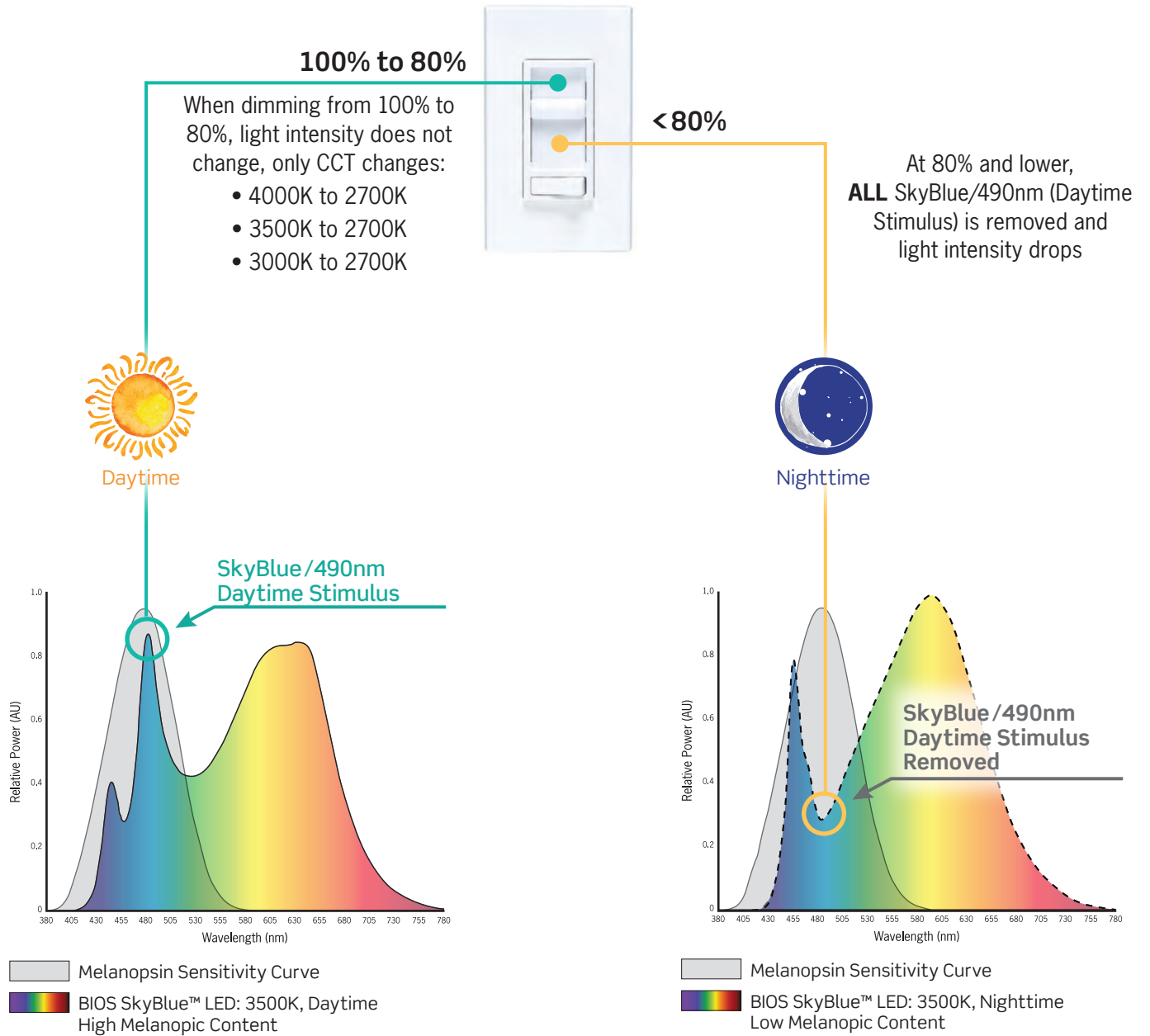
PROJECT

TYPE



# R4 and R6 LED Downlights with BIOS SkyBlue™ Circadian Lighting Technology

## TUNABLE BIO-DIMMING™



For additional information, visit [www.bioslighting.com](http://www.bioslighting.com)

DATE

PROJECT

TYPE



# R4 and R6 LED Downlights with BIOS SkyBlue™ Circadian Lighting Technology

## WELL BUILDING STANDARDS

BIOS SkyBlue™ LED contributes to satisfying Circadian Lighting Design Features and meets other features within the WELL Light Concept, including color quality and visual comfort metrics; helping buildings deliver more thoughtful and intentional spaces that enhance human health and well-being.

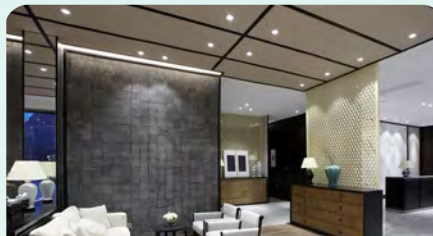
### Circadian Lighting Design

WELL v2™ Feature L03

Provide users with appropriate exposure to light for maintaining circadian health and aligning the circadian rhythm with the day-night cycle

\*EML (Equivalent Melanopic Lux) is a measurement of the effect of both natural and electric light on the human circadian rhythm.

#### BIOS SkyBlue™ LED



#### Maintains Lighting Design Intent

- Highest M/P Ratio for a given CCT
- Most effective technology to help meet EML\* vertical light requirements

#### Traditional White LED



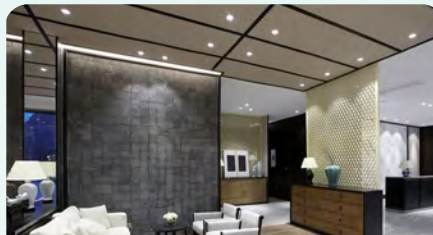
#### Increase Fixture Quantity

- More luminaires required to achieve higher light levels on vertical surfaces
- Increases energy use and lighting power density within the space

### Glare Control

WELL v2™ Feature L04

Manage glare by using strategies, such as calculation of glare and choosing the appropriate light fixtures for the space



#### Visually Comfortable / Energy Efficient

- Higher M/P Ratio means fewer luminaires needed to illuminate the space
- Naturally minimizes amount of glare



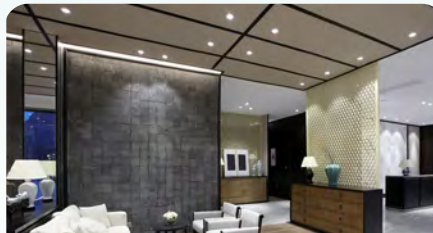
#### Increase Glare / Increase Energy

- Higher output luminaires are needed within the space to meet EML targets
- Increases energy use
- Probability of increased glare and visual discomfort in the space

### Electric Light Quality

WELL v2™ Feature L07

Develop and implement strategies to create a visually comfortable lighting environment



#### Desirable CCT / Great Color Quality

- 80+ CRI
- Ultra High R9 (>90)



#### Increase CCT / Decrease Color Quality

- Higher CCTs (5000K, 6500K) required to achieve the target EML values
- Does not meet R9 requirements

DATE	PROJECT	TYPE
------	---------	------

## R4 KB SERIES | 4-Inch LED Downlights with BIOS SkyBlue™ Technology Dimming Specifications

- Incandescent 120VAC Dimmers adjust the light with *Forward Phase Control*, where the Dimmer “chops” the forward part of the AC Wave to deliver less or more power to the light source. No Neutral Wire Connection required.
- Electronic Low Voltage 120VAC Dimmers adjust the light with *Reverse Phase Control*, where the Dimmer “chops” the back part of the AC Wave to deliver less or more power to the light source. Neutral Wire Connection required.
- 0–10V DC Low Voltage Dimmers operate using two (2) Low Voltage Dimming Wires that are separate from the 120VAC or 277VAC power. The Dimmer sends a Variable Output Voltage to the luminaire based upon the dimming level. 10V Corresponds to undimmed operation, 5V to 50% and so on. Switching On/Off is controlled with the line voltage power (120VAC or 277VAC) input to the Dimmer. Dimming operation is controlled with the 0–10V DC Low Voltage Wiring Connection between the Dimmer and the LED Driver. The Control Signal runs on two (2) low voltage control wires color coded Violet and Pink.
- Lutron EcoSystem Drivers provide continuous dimming from 1%–100%. For a complete list of compatible Dimmers and Controls, visit [www.lutron.com](http://www.lutron.com).
- Use DALI approved Controls for dimming eldoLED ECOdrive, 1% Dimming (Dimming Option D7 or MVD7) and eldoLED SOLOdrive, 0.1% Dimming (Dimming Option D9 or MVD9).

Manufacturer	Product	Model	TRIAC, ELV, 0-10V DIMMING	eldoLED ECOdrive 0-10V	eldoLED SOLOdrive 0-10V
			(12D, 27D or MVD Option*)	(12D6, 27D6 or MVD6 Option)	(12D8, 27D8 or MVD8 Option)
			Light Output	Light Output	Light Output
Leviton	IllumaTech	IPI06-1LZ	1%-100%	N/A	N/A
Leviton	SureSlide	6631-2	1%-100%	N/A	N/A
Leviton	Vizia	VPE06	9%-100%	N/A	N/A
Leviton	Trimatron	6683-IW	6%-100%	N/A	N/A
Leviton	Decora	6161	15%-100%	N/A	N/A
Leviton	SureSlide	6633-P	1%-100%	N/A	N/A
Leviton	IllumaTech	IPE04	6%-100%	N/A	N/A
Leviton	IllumaTech	IP710-DLX	N/A	1%-100%	0.1%-100%
Cooper	Devine	DLC03P	1%-100%	N/A	N/A
Cooper	Skye	SLC03P	0%-100%	N/A	N/A
Cooper	Decorator	DAL06P	0%-100%	N/A	N/A
Pass & Seymour	Titan	CD4FB-W	N/A	1%-100%	0.1%-100%
Synergy		ISD BC	N/A	1%-100%	0.1%-100%
Watt Stopper	Miro Decorator	DCLV1	N/A	1%-100%	0.1%-100%
Lutron	Ariadni	TGCL-153P	1%-100%	N/A	N/A
Lutron	Ariadni	TG-600P	13%-100%	N/A	N/A
Lutron	Diva	DVCL-153P	1%-100%	N/A	N/A
Lutron	Diva	DV600P	6%-100%	N/A	N/A
Lutron	Diva	DVELV303P	6%-100%	N/A	N/A
Lutron	Diva	DVTV	N/A	1%-100%	0.1%-100%
Lutron	Faetra	FAELV500	12%-100%	N/A	N/A
Lutron	Lumea	LG600P	8%-100%	N/A	N/A
Lutron	Maestro	MAELV600	16%-100%	N/A	N/A
Lutron	Nova	NFTV	N/A	1%-100%	0.1%-100%
Lutron	Nova T	NTFTV	N/A	1%-100%	0.1%-100%
Lutron	Skylark	S-603PG	5%-96%	N/A	N/A
Lutron	Skylark	S600P	5%-100%	N/A	N/A
Lutron	Skylark	SELV300P	10%-100%	N/A	N/A
Lutron	Skylark	CT103P	9%-100%	N/A	N/A

\*277V Triac Dimming is not available

### NOTES

1. Testing was performed with a single luminaire connected to Dimmer.
2. Testing has been performed on these Dimmers, but this does not imply any warranty of compatibility.
3. Dimming performance can be influenced by different Loads, as well as variations in Dimmer Switches within the same Model.
4. Dimmer Maximum Load Rating with LED may differ from published Traditional Source Dimmer Ratings. Consult manufacturer for maximum Dimmer information.
5. Consult factory for additional dimming information.