

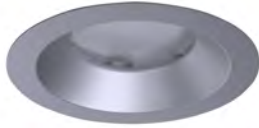
DATE

PROJECT

TYPE

# R4S SERIES | Trims for 4-Inch Shallow Downlights

## TRIMMED OPTIONS



**C4322S-PL**  
Platinum Reflector



**C4322S Series**  
*Specification Grade Reflector*  
4-7/16-Inch ID, 5-3/4-Inch OD,  
3-1/8-Inch Height

Specification Grade Reflector. Includes Solite Lens. Wet Location approved.

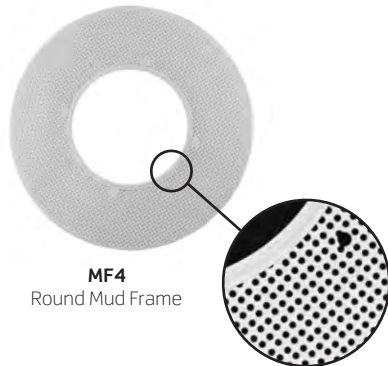
**C4322S** - Specular Reflector

**CLR**<sup>1</sup> - Anodized Clear  
**PL**<sup>1</sup> - Anodized Platinum  
**WHT** - Matte White Painted

1. Available with White Painted Flange: add -WPF to end of part number

## TRIMLESS OPTIONS

**Trimless Options require use of Mud Frame accessory (MF4, ordered separately)**



**MF4**  
Round Mud Frame

### 4-Inch Round Mud Frame

10-Inch OD

**Required for use with trimless options.** Die-cast Ring with Steel Mesh Frame. Painted white.



**CN4322S-CLR**  
Anodized Clear Trimless Reflector



**CN4322S Series**  
*Specification Grade Trimless Reflector with Solite Lens*  
4-7/16-Inch Aperture

Specification Grade Specular Reflector. Includes Solite Lens. For use with 1/2- to 1-inch ceiling thicknesses only. Wet Location approved.

**CN4322S** - Specular Reflector

**CLR** - Clear Specular  
**PL** - Platinum  
**WHT** - Matte White Painted

**MF4** - 4-Inch Round Mud Frame