

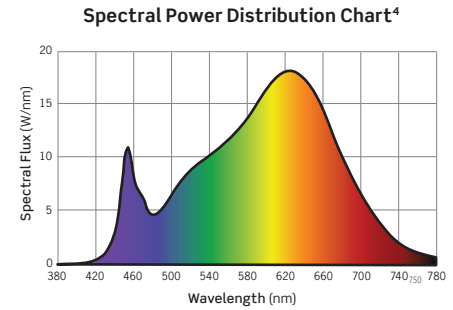
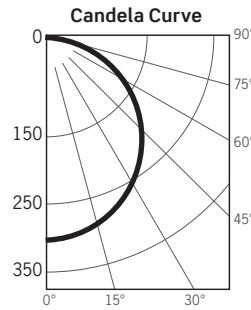
WFBS SERIES | Square Baffle Slim Downlights

PHOTOMETRICS

WFBS4-SW5C12D-MW: 4-Inch Square Matte White Baffle

Fixture Delivered Lumens: 837.5
 Total Watts@120V: 11.4
 Lumens Per Watt: 73.5
 Center Beam Candle Power: 307
 Beam Distribution: 108°
 Spacing Criterion: 1.24
 Color Rendering Index (CRI)¹: 94
 Color Temperature (CCT)²: 3010K
 Designed for 50,000 Hour Lamp Life³
 LM-63 Test No. G23012304
 LM-79 Test No. S23012304

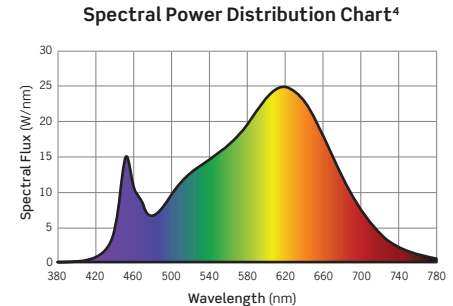
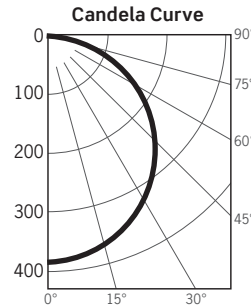
Intensity Distribution		
DISTANCE (FT.)	FOOTCANDLES (FC)	BEAM DIAMETER (FT.)
6 FT	8.5	16.6
8 FT	4.8	22.2
10 FT	3.1	27.7
12 FT	2.1	33.2
14 FT	1.6	38.8
16 FT	1.2	44.3



WFBS6-SW5C12D-MW: 6-Inch Square Matte White Baffle

Fixture Delivered Lumens: 1078
 Total Watts@120V: 14.2
 Lumens Per Watt: 75.9
 Center Beam Candle Power: 386
 Beam Distribution: 111°
 Spacing Criterion: 1.25
 Color Rendering Index (CRI)¹: 94.4
 Color Temperature (CCT)²: 2968K
 Designed for 50,000 Hour Lamp Life³
 LM-63 Test No. G23012309
 LM-79 Test No. S23012309

Intensity Distribution		
DISTANCE (FT.)	FOOTCANDLES (FC)	BEAM DIAMETER (FT.)
6 FT	10.7	17.3
8 FT	6.0	23.1
10 FT	3.9	28.9
12 FT	2.7	34.7
14 FT	2.0	40.4
16 FT	1.5	46.2



1. Accuracy of Rendering Colors 2. Color Appearance of Light Source 3. Dependent on Surrounding Temperatures 4. Colors Present within the Light Source

PHOTOMETRIC DATA

WFBS4			
NOM. CCT	LUMENS	POWER (W)	Lm/W
2700K	804	11.2	71.8
3000K	838	11.4	73.5
3500K	871	11.2	77.7
4000K	883	11.3	78.1
5000K	857	11.2	76.5

WFBS6			
NOM. CCT	LUMENS	POWER (W)	Lm/W
2700K	1042	14.0	74.4
3000K	1078	14.2	75.9
3500K	1123	14.0	80.2
4000K	1145	14.0	81.2
5000K	1121	14.0	80.1

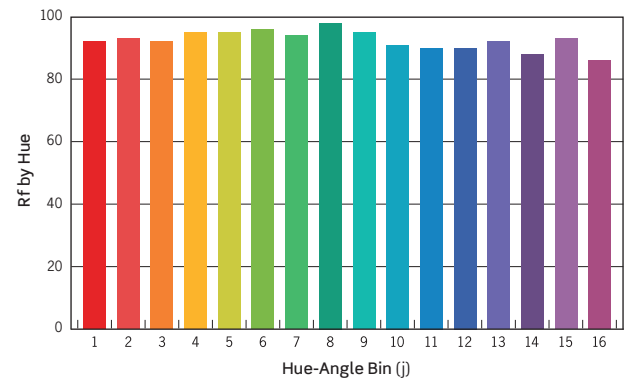
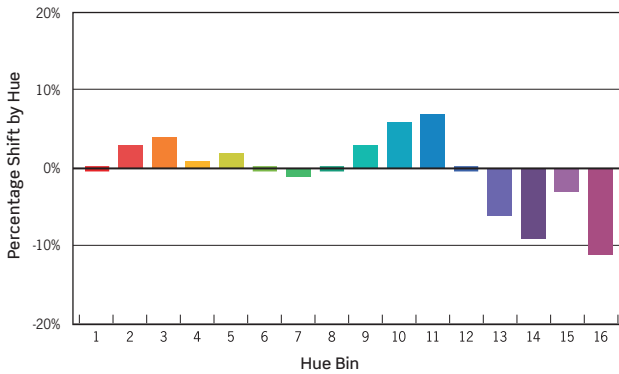
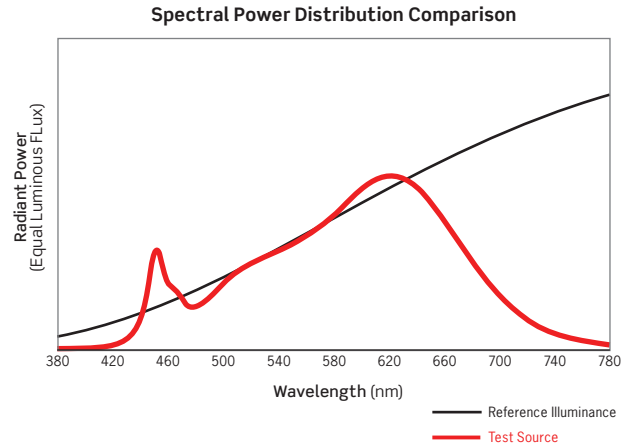
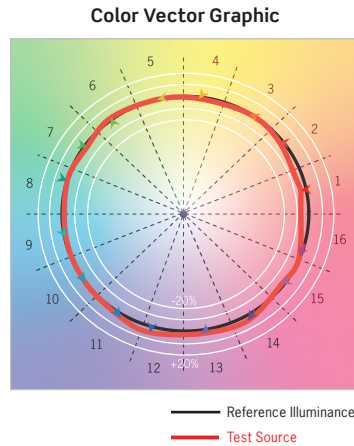
WFBS SERIES | Square Baffle Slim Downlights

PHOTOMETRICS

TM-30 DATA: WFBS6-SW5C12D-MW 6-Inch Square Matte White Baffle

ANSI/IES TM-30-18 Color Rendition Report Test No. S23012309

R_f	93
R_g	100
CCT(K)	2968K
D_{uv}	-0.0024
u^i	0.2526
v^i	0.5186



HUE BIN	1	2	3	4	5	6	7	8	9	10	11	12	13	14	15	16
HUE SHIFT	0%	3%	4%	1%	2%	0%	-1%	0%	3%	6%	7%	0%	-6%	-9%	-3%	-11%
R _f VALUE	92	93	92	95	95	96	94	98	95	91	90	90	92	88	93	86

Colors are for visual orientation purposes only