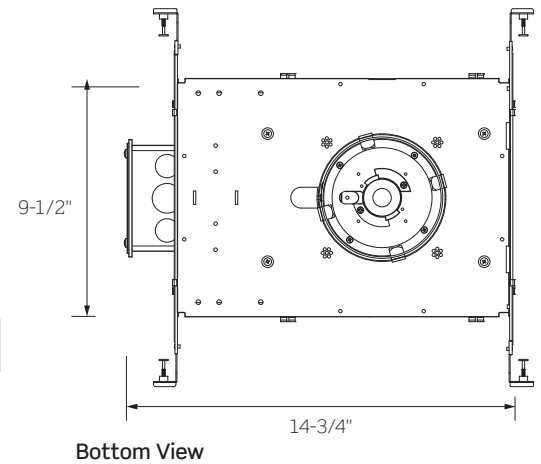
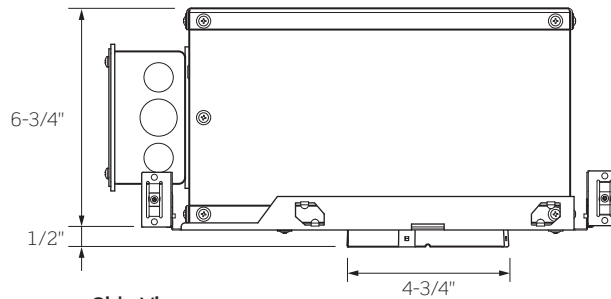


## R4IC SERIES | 4-Inch Round Insulated Ceiling (IC)/StopAire™ Downlight



cCSAus  
Listed



Damp  
Location



ENERGY STAR®  
Certified



IC Rated



Air-tight  
Certified



ASTM  
E283

**Ceiling Opening:** 4-7/8-Inches  
**Ceiling Thickness:** 1/2- to 1-1/2-Inches

	R4IC1	R4IC2	R4IC3	R4IC4
WATTAGE	12W	16W	21W	30W
LUMEN OUTPUT¹	1100Lm	1600Lm	2200Lm	3000Lm
COLOR TEMPERATURE	2700K / 3000K / 3500K / 4000K			
CRI	83 (80min) / 90+			
DRIVER INPUT WATTAGE	12W	16W	21W	30W
INPUT CURRENT (A) 120V/277V/347V	.08/.04/.03	.12/.06/.04	.17/.08/.06	.23/.11/.08
INPUT VOLTAGE	90–305VAC, 50/60Hz			
120V – 277V Standard Driver	90–305VAC, 50/60Hz			
347V Standard Driver	347VAC, 50/60Hz			
Lutron Eco-System® Driver	120–277VAC, 50/60Hz			
eldoLED ECODrive / SOLOdrive	120–277VAC, 50/60Hz			
DRIVER POWER FACTOR	> 0.90			
TOTAL HARMONIC DISTORTION	< 20%			
LISTINGS	cCSAus Certified to UL Standards; Suitable for Damp Locations ENERGY STAR® Certified Conforms to Washington State Energy Code (WSEC) for Low Air Infiltration; tested in accordance with ASTM E283 (2.0 CFM or less)			
WARRANTY	Five (5) year replacement after date of purchase			
SYSTEM RATING	50,000 Hours @ 70% Lumen Maintenance			

1. Approximate lumen output based on 3000K performance; see photometric test results for additional information

## R4IC SERIES | 4-Inch Round Insulated Ceiling (IC)/StopAire™ Downlight

### ORDERING INFORMATION

Example Order: R4IC230KCMVD9

Housing/LED Series	Color Temp/CRI	Electrical/Dimming
<b>R4IC1</b> 12W/1100lm	83 (80min) CRI 90 CRI	<b>MVD<sup>1</sup></b> 120-277V Forward/Reverse Phase/0-10V Dimming
<b>R4IC2</b> 16W/1600lm	<b>27K</b> 2700K <b>27KC</b> 2700K	<b>34D2<sup>2</sup></b> 347V 0-10V Dimming
<b>R4IC3</b> 21W/2200lm	<b>30K</b> 3000K <b>30KC</b> 3000K	<b>MVD4<sup>3</sup></b> Lutron Hi-Lume 1% EcoSystem Driver with Soft-on, Fade-to-Black
<b>R4IC4</b> 30W/3000lm	<b>35K</b> 3500K <b>35KC</b> 3500K	<b>MVD6<sup>4</sup></b> eldoLED ECOdrive, 0-10V, 1% Dimming
	<b>40K</b> 4000K <b>40KC</b> 4000K	<b>MVD7<sup>4</sup></b> eldoLED ECOdrive, DALI, 1% Dimming
		<b>MVD8<sup>4</sup></b> eldoLED SOLOdrive, 0-10V, 0.1% Dimming
		<b>MVD9<sup>4</sup></b> eldoLED SOLOdrive, DALI, 0.1% Dimming

1. Forward/Reverse Phase Dimming for 120V only

2. eldoLED Drivers are programmed for Linear Curve Dimming as standard; for Logarithmic Curve Dimming, consult factory

### ACCESSORY ORDERING INFORMATION

Mounting Accessories
Standard Hanger Bars Supplied with Housing
<b>HB-30</b> T-Bar Hanger Set

See page 3 for compatible Trim information and details

### PRODUCT SPECIFICATIONS

#### CONSTRUCTION

- Specification Grade 4-inch round 16 gauge Galvanized Steel Insulated Ceiling (IC)/StopAire™ Housing with Die-Cast Aluminum Heat Sink
- For use in applications with direct contact with insulation materials
- Quick-connect Light Engine; Drivers are fully accessible from below the ceiling and can be easily removed
- Dual Nailer Hanger Bars are adjustable for 16- and 24-inch center joists (14-1/4- to 24-1/2-inch). Nailer Bars may be extended to rest on T-Bar ceilings; optional clip-on T-Bar Hangers available.
- Pre-wired Junction Box with eight (8) 1/2-inch concentric Knockouts
- Output over-voltage, over-current and short circuit protection
- Approved for Through Circuit Wiring; max. eight (8) 12 AWG (4-in/4-out), wiring rated to 90°C

#### PERFORMANCE SUMMARY

- 2700K, 3000K, 3500K and 4000K CCTs; 80 CRI min., 83 typical; high CRI of 90+ available
- Excellent fixture-to-fixture color consistency with a 3-step MacAdam Ellipse tolerance
- All R4 Downlights are available for non-dimming and dimming applications; for compatible Dimmers, refer to the Dimming Specification Sheet
- Flanged or Trimless Specification Grade Trims in several different styles and finishes available
- Trimless options require use of a Mud Frame (MF4, ordered separately) for securing Downlight and Trim in a 1/2- to 1-inch ceiling thickness only
- Trimless options cannot be used on Remodel Style Housings (R4RM) or with RSA4L Slope Ceiling Adapters
- UL8750 and Class 2 Compliant; RoHS Compliant, US only
- Assembled in the USA

## R4 SERIES | Trims for 4-Inch Round Downlights

### TRIMMED OPTIONS



C4321-WHT-PL



C4321-WHT-B



#### C4321 Series: Cone Series

##### Two Piece Reflector with Lower Cone

- 3-7/8-Inch ID, 5-11/16-Inch OD, 3-1/8-Inch Height
- Two Piece Reflector: Upper Reflector with Lower Cone
- Includes one (1) LF20-CL Clear Glass Lens
- Approved for Wet Locations when Glass Lens is installed

Trim	
<b>C4321-CLR-CLR</b>	Clear Reflector/Clear Lower Cone
<b>C4321-CLR-PL</b>	Clear Reflector/Platinum Lower Cone
<b>C4321-WHT-CLR</b>	White Reflector/Clear Lower Cone
<b>C4321-WHT-PL</b>	White Reflector/Platinum Lower Cone



#### C4321 Series: Baffle Series

##### Two Piece Reflector with Lower Baffle

- 3-7/8-Inch ID, 5-11/16-Inch OD, 3-1/8-Inch Height
- Two Piece Reflector: Upper Reflector with Lower Baffle
- Includes one (1) LF20-CL Clear Glass Lens
- Approved for Wet Locations when Glass Lens is installed

Trim	
<b>C4321-CLR-B</b>	Clear Reflector/Black Lower Baffle
<b>C4321-CLR-P</b>	Clear Reflector/White Lower Baffle
<b>C4321-WHT-B</b>	White Reflector/Black Lower Baffle
<b>C4321-WHT-P</b>	White Reflector/White Lower Baffle



C4327-CLR-PL



C4327-CLR-P



#### C4321 Series: Cone Series

##### Two Piece Reflector with Lower Cone and Prismatic Convex Lens

- 3-7/8-Inch ID, 5-11/16-Inch OD, 3-1/8-Inch Height
- Two Piece Reflector: Upper Reflector with Lower Cone and Prismatic Convex Lens
- Lens has 1-1/2-inch regress
- Approved for Wet Locations

Trim	
<b>C4327-CLR-CLR</b>	Clear Reflector/Clear Lower Cone
<b>C4327-CLR-PL</b>	Clear Reflector/Platinum Lower Cone
<b>C4327-WHT-CLR</b>	White Reflector/Clear Lower Cone
<b>C4327-WHT-PL</b>	White Reflector/Platinum Lower Cone



#### C4327 Series: Baffle Series

##### Two Piece Reflector with Lower Baffle and Prismatic Convex Lens

- 3-7/8-Inch ID, 5-11/16-Inch OD, 3-1/8-Inch Height
- Two Piece Reflector: Upper Reflector with Lower Baffle and Regressed Prismatic Convex Lens
- Lens has 1-1/2-inch regress
- Approved for Wet Locations

Trim	
<b>C4327-CLR-B</b>	Clear Reflector/Black Lower Baffle
<b>C4327-CLR-P</b>	Clear Reflector/White Lower Baffle
<b>C4327-WHT-B</b>	White Reflector/Black Lower Baffle
<b>C4327-WHT-P</b>	White Reflector/White Lower Baffle

## R4 SERIES | Trims for 4-Inch Round Downlights

### TRIMMED OPTIONS



C4322-CLR



C4322DF-SL



#### C4322 Series

##### Specification Grade Reflector

- 4-3/8-Inch ID, 5-11/16-Inch OD, 3-1/8-Inch Height
- For Wet Location approved trim, add "-C" for Clear Lens or "-SL" for Sandblast Lens after finish code
- White Painted Flange available for -CLR and -PL finish trims; add "-WPF" to the end of the part number

Trim	
<b>C4322N-CLR</b> <sup>1</sup>	35° Narrow Beam Clear Specular Reflector
<b>C4322M-CLR</b> <sup>1</sup>	51° Medium Beam Clear Specular Reflector
<b>C4322W-CLR</b> <sup>1</sup>	80° Wide Beam Clear Specular Reflector
<b>C4322-PL</b> <sup>1</sup>	59° Platinum Reflector
<b>C4322-PLWHE</b>	59° Platinum Wheat Reflector
<b>C4322-WHT</b>	70° White Reflector
1. Finish available with White Painted Flange; add "-WPF" to end of part number	



#### C4322DF Series

##### ISOWET Dead Front Reflector

- 4-3/8-Inch ID, 5-11/16-Inch OD, 3-1/8-Inch Height
- Isolated, Wet Location approved Thermoplastic Reflector
- Clear Glass Lens deeply regressed inside top of Reflector

Trim	
<b>C4322DF-SL</b> <sup>1</sup>	Satin Silver Painted Dead Front Reflector
<b>C4322DF-WHT</b>	Matte White Painted Dead Front Reflector
1. Finish available with White Painted Flange; add "-WPF" to end of part number	



C4323-CLR

#### C4323 Series

##### Lensed Wall Wash Reflector

- 4-Inch ID; 5-11/16-Inch OD

Trim	
<b>C4323-CLR</b> <sup>1</sup>	Clear Reflector
<b>C4323-PL</b> <sup>1</sup>	Platinum Reflector
<b>C4323-WHT</b>	White Reflector
1. Finish available with White Painted Flange; add "-WPF" to end of part number	

## R4 SERIES | Trims for 4-Inch Round Downlights

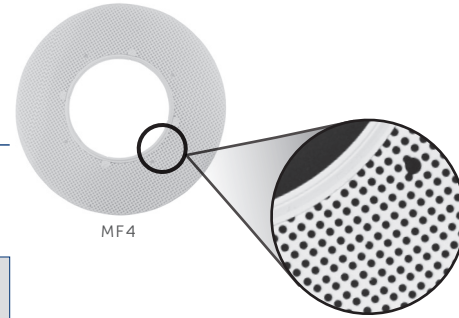
### MUD FRAME

**NOTE:** The Mud Frame is required for trimless applications

#### Mud Frame

- Die-cast ring with steel mesh frame, painted white
- 10-Inch Outer Diameter
- Required for trimless applications

Mud Frame
MF4



### TRIMLESS OPTIONS



CN4322-CLR



#### CN4322 Series

##### Specification Grade Trimless Reflector

- 4-3/8-Inch ID, 4-3/4-Inch OD, 4-3/8-Inch Height
- For Wet Location approved trim, add “-C” for Clear Lens or “-SL” for Sandblast Lens after finish code
- For use with 1/2- to 1-inch ceiling thicknesses only
- **Trim cannot be used on Remodel Housings (R4RM) or with Slope Ceiling Adapters (RSA4L)**

Trim
<b>CN4322N-CLR</b> 35° Narrow Beam Clear Reflector
<b>CN4322M-CLR</b> 51° Medium Beam Clear Reflector
<b>CN4322W-CLR</b> 80° Wide Beam Clear Reflector
<b>CN4322-PL</b> 59° Platinum Reflector
<b>CN4322-WHT</b> 70° White Reflector

Lens Options
No Lens, Leave Blank
<b>C</b> Clear
<b>SL</b> Sandblast



CN4323-PL

#### CN4323 Series

##### Trimless Wall Wash Reflector with Lens

- 4-Inch ID, 4-3/4-Inch OD
- For use with 1/2- to 1-inch ceiling thicknesses only
- **Trim cannot be used on Remodel Housings (R4RM) or with Slope Ceiling Adapters (RSA4L)**

Trim
<b>CN4323-CLR</b> Clear Reflector
<b>CN4323-PL</b> Platinum Reflector
<b>CN4323-WHT</b> White Reflector

## R4 SERIES | 4-Inch Round Downlight Photometrics

### R4NC630K12D / C4322N-CLR: 3000K, 80 CRI, CLEAR REFLECTOR, NARROW BEAM

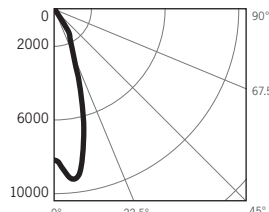
LM-63 Test No. G21070604; LM-79 Test No. S21072001

Fixture Delivered Lumens: 4105.5  
Total Watts@120V: 45.2  
Lumens Per Watt: 90.8  
Center Beam Candle Power: 8153  
Beam Distribution: 35.5°  
Spacing Criterion: 0.60  
Color Rendering Index (CRI)<sup>1</sup>: 83.3  
Color Temperature (CCT)<sup>2</sup>: 3079K  
Designed for 50,000 Hour Lamp Life<sup>3</sup>

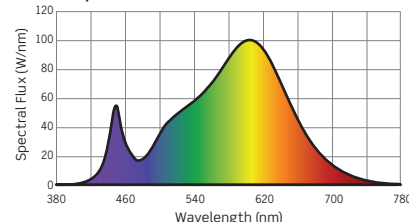
Intensity Distribution

DISTANCE (FT.)	FOOTCANDLES (FC)	BEAM DIA. (FT.)
6 FT	226.5	3.8
8 FT	127.4	5.1
10 FT	81.5	6.4
12 FT	56.6	7.7
14 FT	41.6	9.0
16 FT	31.8	10.2

Candela Curve



Spectral Power Distribution Chart<sup>4</sup>



### R4NC630K12D / C4322M-CLR: 3000K, 80 CRI, CLEAR REFLECTOR, MEDIUM BEAM

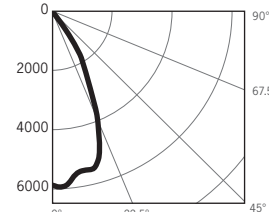
LM-63 Test No. G21070605; LM-79 Test No. S21072001

Fixture Delivered Lumens: 4176.6  
Total Watts@120V: 45.2  
Lumens Per Watt: 92.4  
Center Beam Candle Power: 5860  
Beam Distribution: 51.2°  
Spacing Criterion: 0.79  
Color Rendering Index (CRI)<sup>1</sup>: 83.3  
Color Temperature (CCT)<sup>2</sup>: 3079K  
Designed for 50,000 Hour Lamp Life<sup>3</sup>

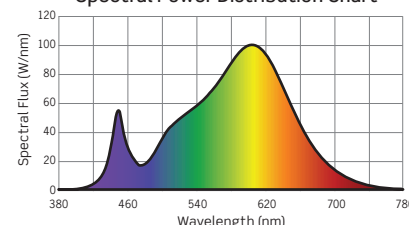
Intensity Distribution

DISTANCE (FT.)	FOOTCANDLES (FC)	BEAM DIA. (FT.)
6 FT	162.8	5.8
8 FT	91.6	7.7
10 FT	58.6	9.6
12 FT	40.7	11.5
14 FT	29.9	13.4
16 FT	22.9	15.3

Candela Curve



Spectral Power Distribution Chart<sup>4</sup>



### R4NC630K12D / C4322W-CLR: 3000K, 80 CRI, CLEAR REFLECTOR, WIDE BEAM

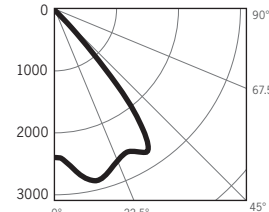
LM-63 Test No. G21070602; LM-79 Test No. S21072001

Fixture Delivered Lumens: 4220.8  
Total Watts@120V: 45.2  
Lumens Per Watt: 93.4  
Center Beam Candle Power: 2402  
Beam Distribution: 80.0°  
Spacing Criterion: 1.2  
Color Rendering Index (CRI)<sup>1</sup>: 83.3  
Color Temperature (CCT)<sup>2</sup>: 3079K  
Designed for 50,000 Hour Lamp Life<sup>3</sup>

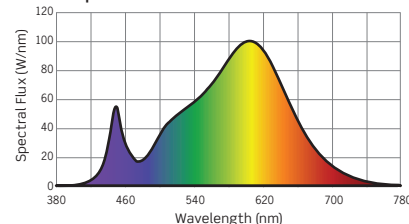
Intensity Distribution

DISTANCE (FT.)	FOOTCANDLES (FC)	BEAM DIA. (FT.)
6 FT	66.7	10.1
8 FT	37.5	13.4
10 FT	24.0	16.8
12 FT	16.7	20.2
14 FT	12.3	23.5
16 FT	9.4	26.9

Candela Curve



Spectral Power Distribution Chart<sup>4</sup>



### R4NC630K12D / C4322-PL: 3000K, 80 CRI, PLATINUM REFLECTOR, MEDIUM BEAM

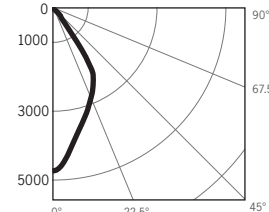
LM-63 Test No. G21070601; LM-79 Test No. S21072001

Fixture Delivered Lumens: 3781.4  
Total Watts@120V: 45.2  
Lumens Per Watt: 83.7  
Center Beam Candle Power: 4724  
Beam Distribution: 59.0°  
Spacing Criterion: 0.91  
Color Rendering Index (CRI)<sup>1</sup>: 83.3  
Color Temperature (CCT)<sup>2</sup>: 3079K  
Designed for 50,000 Hour Lamp Life<sup>3</sup>

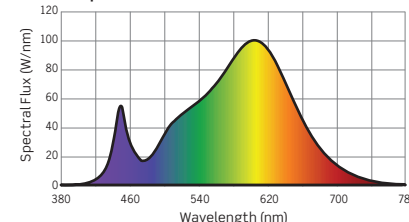
Intensity Distribution

DISTANCE (FT.)	FOOTCANDLES (FC)	BEAM DIA. (FT.)
6 FT	131.2	6.8
8 FT	73.8	9.0
10 FT	47.2	11.3
12 FT	32.8	13.5
14 FT	24.1	15.8
16 FT	18.5	18.1

Candela Curve



Spectral Power Distribution Chart<sup>4</sup>



1. Accuracy of Rendering Colors 2. Color Appearance of Light Source 3. Dependent on Surrounding Temperatures 4. Colors Present within the Light Source

## PHOTOMETRIC MULTIPLICATION FACTORS

Lumen output values fluctuate based on Color Temperature, Luminaire Wattage/Output and Trim Selection. To estimate lumen output of the various CCT/CRI options, multiply 3000K (80 CRI min) results by the following:

CCT MULTIPLIERS		
CCT	STANDARD CRI	HIGH (90+) CRI
2700K	0.94	0.70
3000K	1.00	0.75
3500K	1.02	0.81
4000K	1.04	0.87

OUTPUT MULTIPLIERS				
12W/SERIES 1	16W/SERIES 2	21W/SERIES 3	30W/SERIES 4	38W/SERIES 5
0.28	0.39	0.54	0.72	0.89

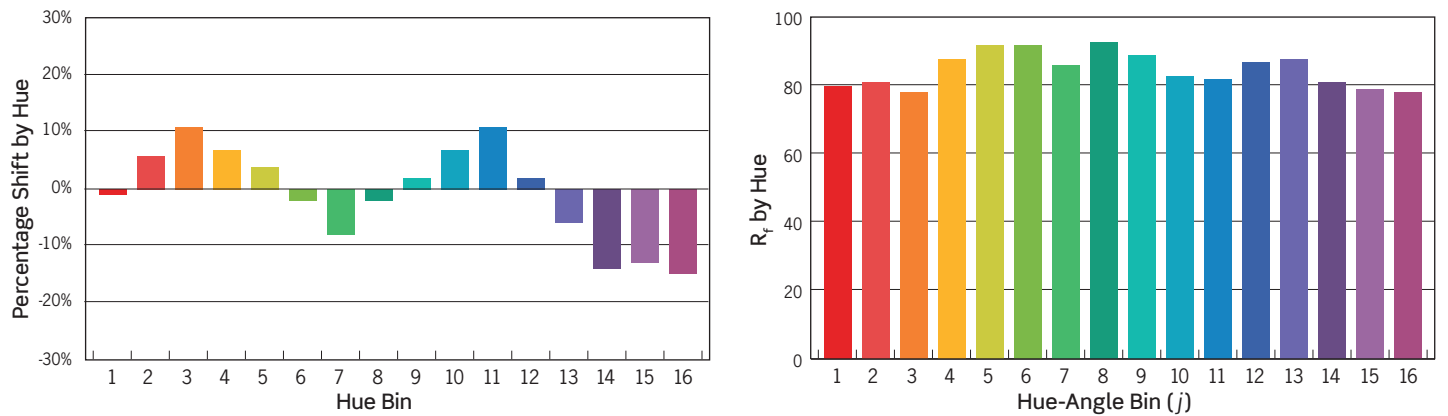
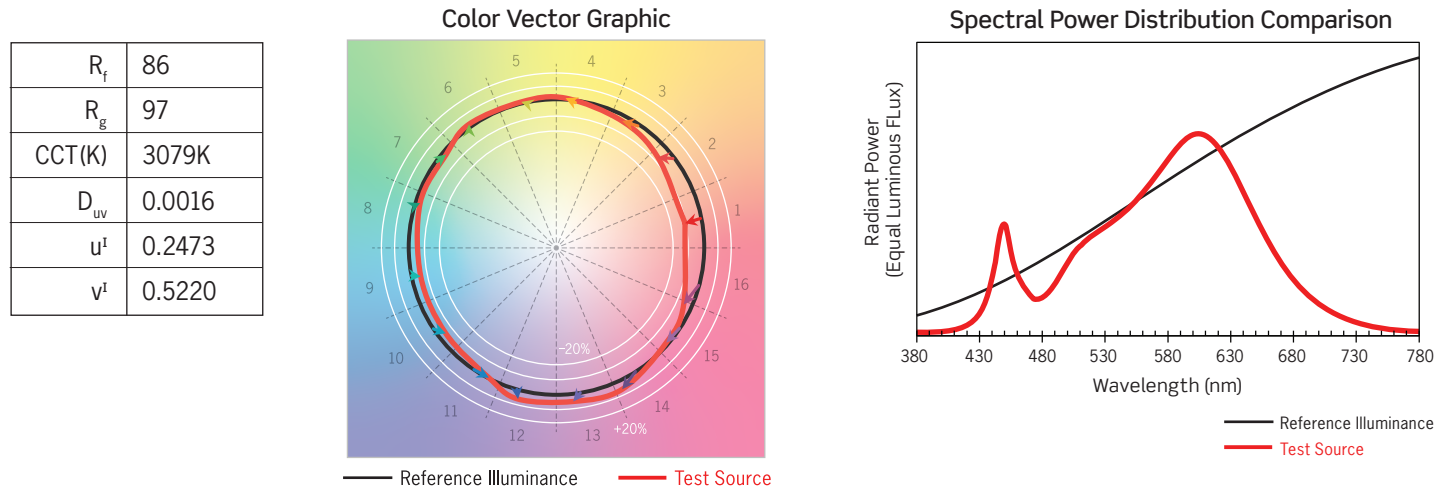
TRIM MULTIPLIERS	
C4322-PL	C4322-WHT
0.91	0.93

## R4 SERIES | 4-Inch Round Downlight Photometrics

### TM-30 DATA: R4NC630K12D / C4322M-CLR

ANSI/IES TM-30-18 Color Rendition Report Test No. S21072001

Colors are for visual orientation purposes only



HUE BIN	1	2	3	4	5	6	7	8	9	10	11	12	13	14	15	16
HUE SHIFT	-1%	6%	11%	7%	4%	-2%	-8%	-2%	2%	7%	11%	2%	-6%	-14%	-13%	-15%
$R_f$ VALUE	81	82	79	89	93	93	87	94	90	84	83	88	89	82	80	79

## R4 SERIES | 4-Inch Round Downlights: Dimming Specifications

Manufacturer	Product	Model	PHASE/0-10V DIMMING (D, D2, or MVD Option*)	eldoLED ECOdrive 0-10V (D6, D8, MVD6, or MVD8 Option)	eldoLED SOLOdrive 0-10V (D7, D9, MVD7, or MVD9 Option)
			Light Output	Light Output	Light Output
Leviton	IllumaTech	IPI06-1LZ	1%-100%	NA	NA
Leviton	SureSlide	6631-2	1%-100%	NA	NA
Leviton	Vizia	VPE06	9%-100%	NA	NA
Leviton	Trimatron	6683-IW	6%-100%	NA	NA
Leviton	Decora	6161	15%-100%	NA	NA
Leviton	SureSlide	6633-P	1%-100%	NA	NA
Leviton	IllumaTech	IPE04	6%-100%	NA	NA
Leviton	IllumaTech	IP710-DLX	NA	1%-100%	0.1%-100%
Cooper	Devine	DLC03P	1%-100%	NA	NA
Cooper	Skye	SLC03P	0%-100%	NA	NA
Cooper	Decorator	DAL06P	0%-100%	NA	NA
Pass & Seymour	Titan	CD4FB-W	NA	1%-100%	0.1%-100%
Synergy		ISD BC	NA	1%-100%	0.1%-100%
Watt Stopper	Miro Decorator	DCLV1	NA	1%-100%	0.1%-100%
Lutron	Ariadni	TGCL-153P	1%-100%	NA	NA
Lutron	Ariadni	TG-600P	13%-100%	NA	NA
Lutron	Diva	DVCL-153P	1%-100%	NA	NA
Lutron	Diva	DV600P	6%-100%	NA	NA
Lutron	Diva	DVELV303P	6%-100%	NA	NA
Lutron	Diva	DVTV	NA	1%-100%	0.1%-100%
Lutron	Faedra	FAELV500	12%-100%	NA	NA
Lutron	Lumea	LG600P	8%-100%	NA	NA
Lutron	Maestro	MAELV600	16%-100%	NA	NA
Lutron	Nova	NFTV	NA	1%-100%	0.1%-100%
Lutron	Nova T	NTFTV	NA	1%-100%	0.1%-100%
Lutron	Skylark	S-603PG	5%-96%	NA	NA
Lutron	Skylark	S600P	5%-100%	NA	NA
Lutron	Skylark	SELV300P	10%-100%	NA	NA
Lutron	Skylark	CT103P	9%-100%	NA	NA

\*277V Phase Dimming is not available

### PHASE DIMMING

- Incandescent 120V AC Dimmers adjust the light with *Forward Phase Control*, where the Dimmer “chops” the forward part of the AC Wave to deliver less or more power to the light source. No Neutral Wire Connection required.
- Electronic Low Voltage 120V AC Dimmers adjust the light with *Reverse Phase Control*, where the Dimmer “chops” the back part of the AC Wave to deliver less or more power to the light source. Neutral Wire Connection required.

### 0-10V DIMMING

- 0–10V DC Low Voltage Dimmers operate using two (2) Low Voltage Dimming Wires that are separate from the 120V or 277V AC Power. The Dimmer sends a Variable Output Voltage to the luminaire based upon the dimming level. 10V Corresponds to undimmed operation, 5V to 50% and so on. Switching On/Off is controlled with the Line Voltage Power Input to the Dimmer (120V or 277V AC). Dimming operation is controlled with the 0–10V DC Low Voltage Wiring Connection between the Dimmer and the LED Driver. The Control Signal runs on two (2) low voltage control wires color coded Violet and Pink/Gray.

### EcoSystem/ECOdrive DIMMING

- Lutron EcoSystem Drivers provide continuous dimming from 1%–100%. For a complete list of compatible Dimmers and Controls, visit [www.lutron.com](http://www.lutron.com)
- Use DALI approved Controls for dimming eldoLED ECOdrive, 1% Dimming (Dimming Option D7 or MVD7) and eldoLED SOLOdrive, 0.1% Dimming (Dimming Option D9 or MVD9).

### NOTES

- Testing was performed with a single luminaire connected to Dimmer.
- Testing has been performed on these Dimmers, but this does not imply any warranty of compatibility.
- Dimming performance can be influenced by different Loads, as well as variations in Dimmer Switches within the same Model.
- Dimmer Maximum Load Rating with LED may differ from published Traditional Source Dimmer Ratings. Consult manufacturer for maximum Dimmer information.
- Consult factory for additional dimming information.