

Specflex | **AFSSCN Wet Location Series**
Architectural Strip Lighting | 24V Static White, Continuous COB

PHOTOMETRICS

AFSSCN-530K-7: 24V Wet Location SpecFlex Static White Strip Light

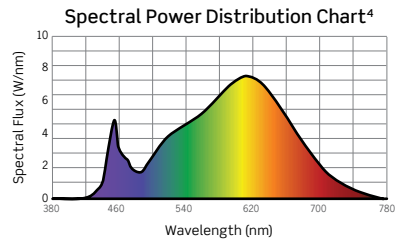
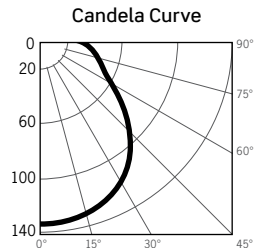
4.6W/Ft, Continuous COB, 1-Foot Strip, 2983K, 91 CRI

Fixture Delivered Lumens: 390.2
Total Watts@24V: 5.0
Lumens Per Watt: 78.1
Center Beam Candle Power: 135
Beam Distribution: 111°
Spacing Criterion: 1.30

LM-63 Test No. G22050605
LM-79 Test No. S22050605

Intensity Distribution

DISTANCE (FT.)	FOOTCANDLES (FC)	BEAM DIA. (FT.)
2 FT	33.8	5.8
4 FT	8.4	11.7
6 FT	3.8	17.5
8 FT	2.1	23.3
10 FT	1.4	29.1
12 FT	0.9	35.0



1. Colors Present within the Light Source

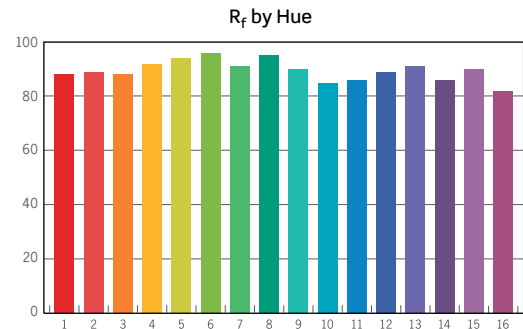
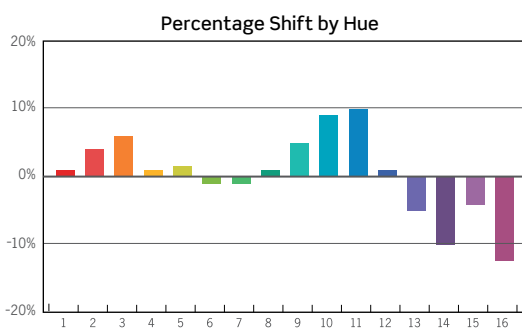
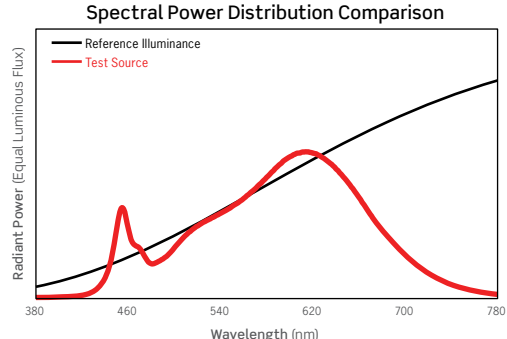
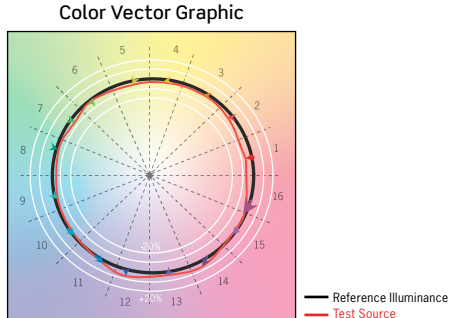
CCT MULTIPLIERS

2400K	2700K	3000K	4000K
0.96	0.98	N/A	1.05

AFSSCN-530K-7 TM-30 DATA

ANSI/IES TM-30-18 Color Rendition Report Test No. S22050605 Colors are for visual orientation purposes only

R _f	89
R _g	98
CCT (K)	2983K
D _{uv}	-0.0015
u'	0.2517
v'	0.5197



HUE BIN	1	2	3	4	5	6	7	8	9	10	11	12	13	14	15	16
HUE SHIFT	1%	4%	6%	1%	2%	-1%	-1%	1%	5%	9%	11%	1%	-6%	-11%	-5%	-13%
R _f VALUE	88	89	88	92	94	96	91	95	90	85	86	89	91	86	90	82